

# ARCHITECTURAL HERITAGE

GARDEN | SCULPTURE | INTERIOR



# ARCHITECTURAL HERITAGE

GARDEN | SCULPTURE | INTERIOR

Welcome to our 2019 Garden Catalogue. A curated collection of classic modern designs manufactured to the highest quality to complement both contemporary and traditional garden schemes. A fine example features on the front cover in the form of our Single Tier Fountain at Miserden Estate, Winner of Historic Houses – Christie's 2018 'Garden of the Year Award'.

Each year we endeavour to innovate and improve our offering, and this year we are especially proud to present '*The Sissinghurst Castle Garden Copper Planter*'. Working in partnership with the National Trust (a proportion of each sale returns to benefit the Trust), the planter is an exact replica of the original, placed in the garden at Sissinghurst by Vita Sackville-West. Coupled with some new copper planter designs, another small but important innovation comes in the form of a rolled edge option, offering clients a fresh design choice.

Alongside our classic garden collection, we look to present a diverse selection of carefully curated Antique Garden Ornament, Modern British Sculpture (including drawings by sculptors) and Architectural Interiors. Our extensive inventory can be viewed on the regularly updated website and for monthly email updates, a latest stock newsletter is available for all registered clients – please do join by visiting [www.architectural-heritage.co.uk](http://www.architectural-heritage.co.uk).

I wish to thank you for your interest and I look forward to being of assistance.

With kind regards  
Alex Puddy  
*Owner*

# ARCHITECTURAL HERITAGE

GARDEN | SCULPTURE | INTERIOR







## PLANTERS



# National Trust

## The Sissinghurst Castle Garden Copper Planter

Sissinghurst Estate was a ruin when purchased by Vita Sackville-West and Harold Nicolson in 1930. After three years of clearing the long-overgrown land, the creation of 'a garden where none was' became a joint labour of love that would last for over three decades.

In general, Harold was responsible for the design and layout along strong architectural lines, while Vita (so named to differentiate her from her mother, also a Victoria) was the head of her team of gardeners, innovating with informal planting schemes to give visitors a



© The Cecil Beaton Studio Archive at Sotheby's



© National Trust Image/Andrew Butler

## ARCHITECTURAL HERITAGE

GARDEN | SCULPTURE | INTERIOR



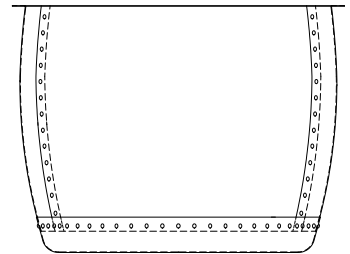
© National Trust Image/Arnhel de Serra

horticultural experience of discovery and exploration.

First opened to the public in 1937, the gardens 'drew on the sense of an abandoned past' with the old Tower at its ancient heart. Although the White Garden is the most well-known of Sissinghurst's ten garden rooms, the Cottage Garden by contrast has a sunset planting scheme of hot colours, warm reds and golds, which shout in a riot of colour in late summer and autumn. Here, in the centre of the garden nestled between four tall Irish yews, is an original Copper Copper. Probably found locally (maybe even in the Tower) this now planter is a remnant of some long-outdated Victorian water heating system, reused by Vita as an axis feature.

Fashioned from the same grade of thick sheet brass, we have fabricated the distinctive bulbous shape and verdigris patinated *The Sissinghurst Castle Garden Copper Planter* to last another lifetime.

Poignantly, Vita wrote in 1959 'his scoop... it is still there – a little hollow in one of the stones near the central copper basin', Harold used it to measure how much rain had fallen in the night. Three years later Vita passed, however, the garden that 'tethered her floating heart' remains to this day for us all to enjoy.



Height 70 cm [2' 3 1/2"]

Diameter 94 cm [3' 1"]

Invited by the National Trust, who now look after Sissinghurst Castle Garden for the nation, Architectural Heritage is proud to have faithfully copied the original planter down to the last rivet.



© National Trust Image/David Seilman



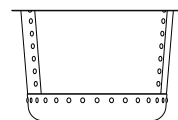






## The Circular Copper Planters

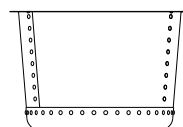
Hand crafted from heavy gauge brass riveted together and then verdigris patinated to imitate the Victorian antique originals.



### Small

Height 35 cm [1' 1 $\frac{3}{4}$ "]

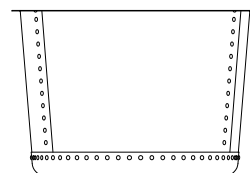
Diameter 54 cm [1' 9 $\frac{1}{4}$ "]



### Medium

Height 45 cm [1' 5 $\frac{3}{4}$ "]

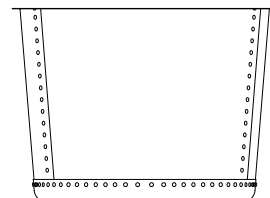
Diameter 68.5 cm [2' 3"]



### Large

Height 60 cm [1' 11 $\frac{1}{2}$ "]

Diameter 89.5 cm [2' 11 $\frac{1}{4}$ "]



### Very Large

Height 73.5 cm [2' 5"]

Diameter 101 cm [3' 3 $\frac{3}{4}$ "]



**The Circular  
Copper Planter  
Small**

Hand crafted from heavy gauge brass, riveted together and then verdigris patinated to imitate the Victorian antique originals.

Height 35 cm [1' 1<sup>3</sup>/<sub>4</sub>"]

Diameter 54 cm [1' 9<sup>1</sup>/<sub>4</sub>"]



**The Circular  
Copper Planter  
Medium**

Hand crafted from heavy gauge brass, riveted together and then verdigris patinated to imitate the Victorian antique originals.

Height 45 cm [1' 5¾"]

Diameter 68.5 cm [2' 3"]



**The Circular  
Copper Planter  
Large**

Hand crafted from heavy gauge brass, riveted together and then verdigris patinated to imitate the Victorian antique originals.

Height 60cm [1' 11½"]

Diameter 89.5cm [2' 11¼"]

**The Circular  
Copper Planter**  
**Large**  
***Rolled Edge***

Hand crafted from heavy gauge brass, riveted together and then verdigris patinated to imitate the Victorian antique originals. This new model provides a fresh take on our classic design.

Height 60 cm [1' 11½"]

Diameter 88.5 cm [2' 10¾"]



**The Circular  
Copper Planter  
Very Large**

Hand crafted from heavy gauge brass, riveted together and then verdigris patinated to imitate the Victorian antique originals.

Height 73.5 cm [2' 5"]

Diameter 101 cm [3' 3¾"]





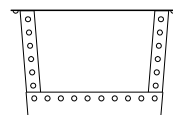






## The Square Copper Planters

Hand crafted from heavy gauge brass, riveted together and then verdigris patinated to echo the Victorian antique originals.

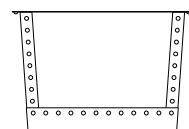


### Small

Height 35 cm [1' 1 $\frac{3}{4}$ "

Width 54 cm [1' 9 $\frac{1}{4}$ "

Depth 54 cm [1' 9 $\frac{1}{4}$ "

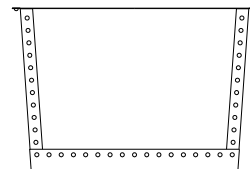


### Medium

Height 45 cm [1' 5 $\frac{3}{4}$ "

Width 68.5 cm [2' 3"

Depth 68.5 cm [2' 3"

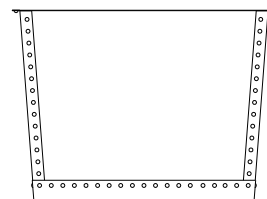


### Large

Height 60 cm [1' 11 $\frac{1}{2}$ "

Width 89.5 cm [2' 11 $\frac{1}{4}$ "

Depth 89.5 cm [2' 11 $\frac{1}{4}$ "



### Very Large

Height 73.5 cm [2' 5"

Width 100.5 cm [3' 3 $\frac{1}{2}$ "

Depth 100.5 cm [3' 3 $\frac{1}{2}$ "



**The Square  
Copper Planter  
Small**

Hand crafted from heavy gauge brass, riveted together and then verdigris patinated to echo the Victorian antique originals.

Height 35cm [1' 1 $\frac{3}{4}$ "

Width 54cm [1' 9 $\frac{1}{4}$ "

Depth 54cm [1' 9 $\frac{1}{4}$ "



**The Square  
Copper Planter  
Medium**

Hand crafted from heavy gauge brass, riveted together and then verdigris patinated to echo the Victorian antique originals.

Height 45cm [1' 5<sup>3</sup>/<sub>4</sub>"

Width 68.5cm [2' 3"

Depth 68.5cm [2' 3"



**The Square  
Copper Planter  
Large**

Hand crafted from heavy gauge brass, riveted together and then verdigris patinated to echo the Victorian antique originals.

Height 60cm [1' 11½"]

Width 89.5cm [2' 11¼"]

Depth 89.5cm [2' 11¼"]



**The Square  
Copper Planter  
Very Large**

Hand crafted from heavy gauge brass, riveted together and then verdigris patinated to echo the Victorian antique originals.

Height 73.5cm [2' 5"]

Width 100.5cm [3' 3½"]

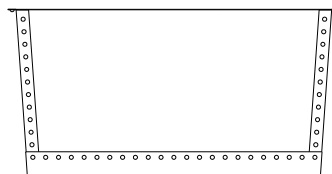
Depth 100.5cm [3' 3½"]





## The Rectangular Copper Planters

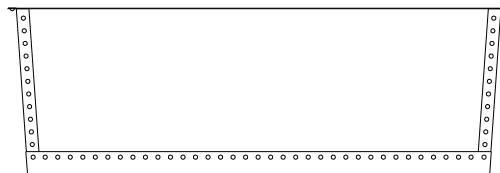
Hand crafted from heavy gauge brass, riveted together and then verdigris patinated to echo the Victorian antique originals.



### Small

Height 60 cm [1' 11½"]

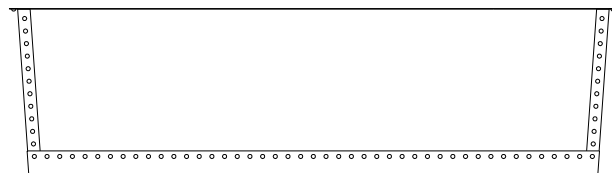
Length 120 cm [3' 11¼"]



### Medium

Height 60 cm [1' 11½"]

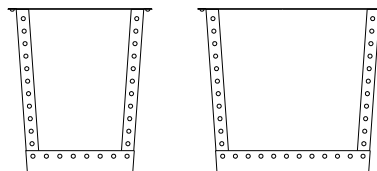
Length 180 cm [5' 10¾"]



### Large

Height 60 cm [1' 11½"]

Length 220 cm [7' 2½"]



### Available in two depths:

Narrow 52 cm [1' 8½"]

Wide 69 cm [2' 3¼"]



**The Rectangular  
Copper Planter  
Small**

Hand crafted from heavy gauge brass, riveted together and then verdigris patinated to echo the Victorian antique originals.

Height 60cm [1' 11½"]

Length 120cm [3' 11¼"]

*Available in two depths:*

Narrow 52cm [1' 8½"]

Wide 69cm [2' 3¼"]





**The Rectangular  
Copper Planter  
Medium**

Hand crafted from heavy gauge brass, riveted together and then verdigris patinated to echo the Victorian antique originals.

Height 60 cm [1' 11½"]

Length 180 cm [5' 10¾"]

*Available in two depths:*

Narrow 52 cm [1' 8½"]

Wide 69 cm [2' 3¼"]



**The Rectangular  
Copper Planter**  
**Large**

Hand crafted from heavy gauge brass, riveted together and then verdigris patinated to echo the Victorian antique originals.

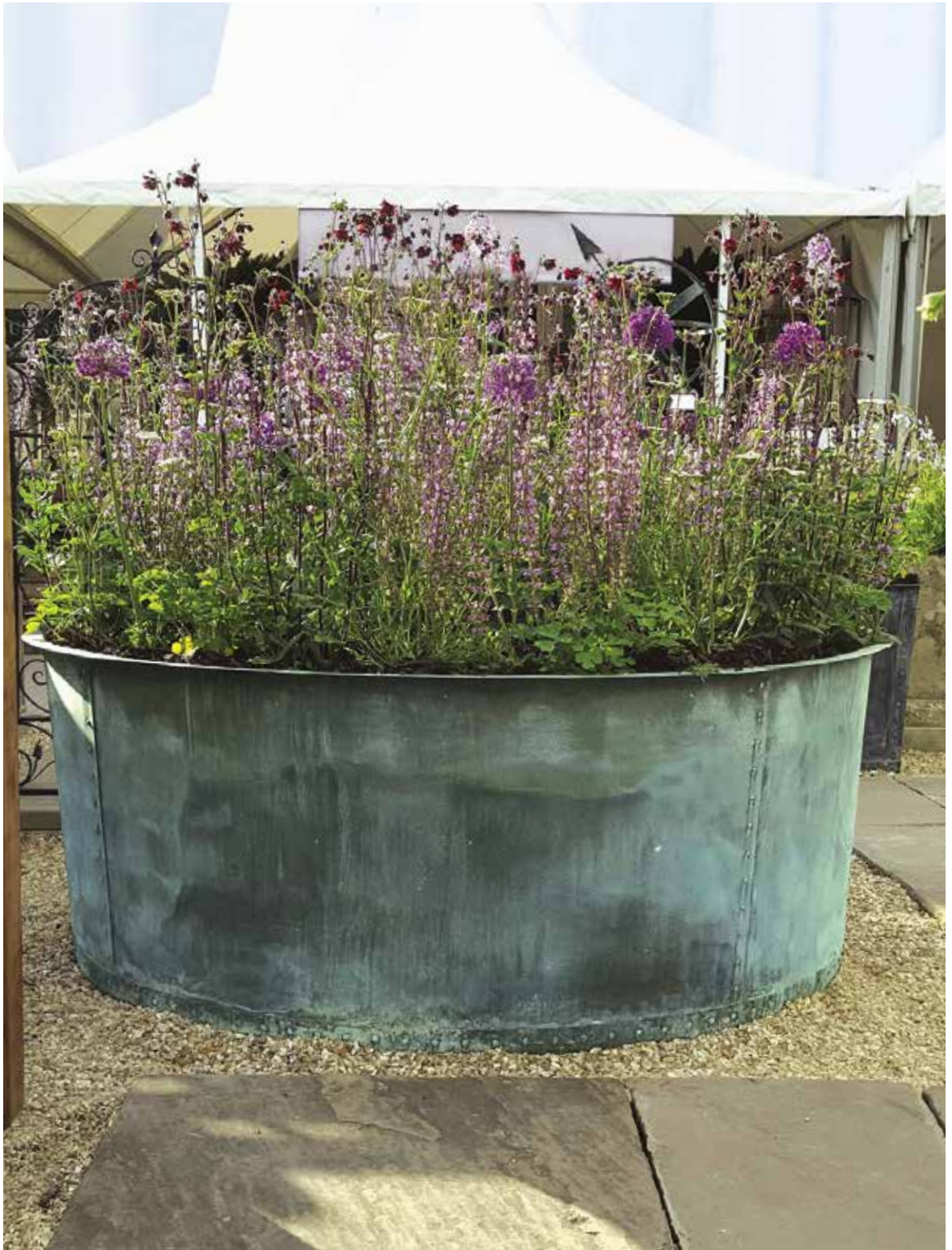
Height 60cm [1' 11½"]  
Length 220cm [7' 2½"]

*Available in two depths:*  
Narrow 52cm [1' 8½"]  
Wide 69cm [2' 3¼"]



**The Rectangular  
Copper Planter  
Modular**

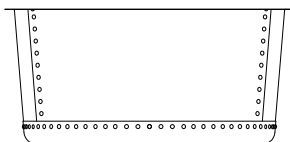
Hand crafted from heavy gauge brass, riveted together and then verdigris patinated. This planter can be fabricated in sections to your specific project requirements.



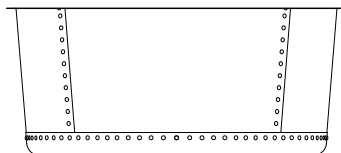


### The Courtyard Copper Planters

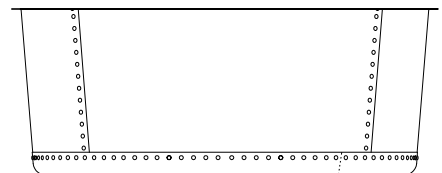
Hand crafted from heavy gauge copper, riveted together and then verdigris patinated to imitate the Victorian antique originals.



**Small**  
Height 50 cm [1' 7¾"]  
Diameter 107 cm [3' 6"]



**Medium**  
Height 55 cm [1' 9½"]  
Diameter 127 cm [4' 2"]



**Large**  
Height 62 cm [2' ½"]  
Diameter 159.5 cm [5' 2¾"]

**The Terrace  
Copper Planter**

Hand crafted from heavy gauge copper, riveted together and then verdigris patinated to echo the Victorian antique originals.

Height 76.2cm [2' 6"]

Width 67.4cm [2' 3"]











### **The Lead Planters**

A range of hand crafted lead planters to our own designs.



**The Estate  
Lead Planter  
Small**

A lead planter ornamented  
with recessed square  
panels.

Height 51 cm [1' 8"]  
Width 54 cm [1' 9¼"]  
Depth 54 cm [1' 9¼"]



**The Estate  
Lead Planter  
Medium**

A lead planter ornamented with recessed square panels.

Height 51 cm [1' 8"]

Width 101.5 cm [3' 4"]

Depth 54 cm [1' 9¼"]



**The Estate  
Lead Planter  
Large**

A lead planter ornamented with recessed square panels.

Height 66 cm [2' 2"]

Width 101.5 cm [3' 4"]

Depth 66 cm [2' 2"]



**The Estate  
Lead Planter  
Very Large**

A lead planter ornamented with recessed square panels.

Height 66 cm [2' 2"]

Width 101.5 cm [3' 4"]

Depth 101.5 cm [3' 4"]



### **The Townhouse Lead Planters**

A lead planter of circular form with drainage holes to base.

#### **Small**

Height 51 cm [1' 8"]  
Diameter 61 cm [2']

#### **Medium**

Height 61 cm [2']  
Diameter 76 cm [2' 6"]

#### **Large**

Height 75 cm [2' 6"]  
Diameter 91.5 cm [3']



### **The Bromsgrove Guild Lead Planter**

A faithful copy of an early 20th century model by the Bromsgrove Guild. An eight sided planter embellished with scenes and motifs relating to nature.

Height 48cm [1'7"]  
Diameter 61cm [1'9"]







**The Lattice Vine  
Lead Planter**

A lead planter of square form embellished with a lattice and vine decorative motif.

Height 48 cm [1'7"]

Width 51 cm [1'8"]

Depth 51 cm [1'8"]





**FOUNTAINS  
& POOL  
SURROUNDS**

Image courtesy of Nico Wills Photography/Miscden Estate



Installation and photograph by Cotswold Estates and Gardens Ltd

### **The Two Tier Fountain**

A two tier fountain in age patinated artificial stone taken from an 18th century original, each bowl having egg and dart carving to the rim, raised upon baluster pedestals with carved foliage. The upper bowl is surmounted by a pineapple finial. A pump pack is available.

Overall height  
262cm [8'7"]  
Overall diameter  
137cm [4'6"]  
Square at base  
67cm [2'2"]



Installation and photograph by Cotswold Estates and Gardens Ltd

### **The Decorative Circular Pool Surround**

An age patinated artificial stone circular pool surround having egg and dart decoration.

External diameter  
426 cm [14']

Internal diameter  
366 cm [12']

Height  
22 cm [8'½"]



### **The Great Westwood Pool Surround**

A large and impressive  
age patinated artificial  
stone pool surround at  
6 metres diameter.

External diameter  
600 cm [19' 8"]

Height  
35 cm [1' 1¾"]



Image courtesy of Nico Valls Photography/Miserden Estate

### **The Single Tier Fountain**

A single tier fountain in age patinated artificial stone, the bowl having egg and dart moulding to the rim raised upon a pedestal with acanthus foliage on square base. Surmounted by a spout in the form of a pineapple. A pump pack is available.

Overall height  
125 cm [4' 1"]  
Overall diameter  
80 cm [2' 7½"]  
Square at base  
45 cm [1' 6"]



### **The Circular Pool Surround**

An age patinated artificial  
stone circular pool  
surround.

External diameter  
320 cm [10' 6"]

Height  
28 cm [11"]





**The Square  
Pool Surround**

This age patinated artificial stone pool surround has many possibilities; squares, rectangles and rills. Illustration shows standard size.

Overall width 262 cm [8' 7"]

Height 28 cm [11"]

### **The Large Single Tier Fountain**

A large single tier fountain in age patinated artificial stone, the bowl having egg and dart moulding to the rim, raised upon a baluster pedestal carved with acanthus foliage, with circular foot and square base. Surmounted by a spout in the form of a pineapple. A pump pack is available.

Overall height

152.5 cm [5']

Overall diameter

135 cm [4' 5"]

Square at base

67 cm [2' 2"]





**The Large Low  
Single Tier  
Fountain**

A large, low, single tier fountain in age patinated artificial stone, the bowl having egg and dart moulding to the rim, raised upon a circular foot and square base. Surmounted by a spout in the form of a pineapple. A pump pack is available.

Overall height  
84cm [2'9"]  
Overall diameter  
135cm [4'5"]  
Square at base  
67cm [2'2"]

### **The Wall Fountain with Lion Mask**

A wall fountain in age patinated artificial stone, having arched back plate inset with a lead lion mask spout, raised above a 'D' shaped bowl with stepped rectangular base. A pump pack is available.

Height 151 cm [5']  
Width 80 cm [2' 7"]  
Depth 51 cm [1' 8"]





### **The Onslow Park Wall Fountain with Lead Spout**

A hand carved natural limestone wall fountain having a lead spout centred to the classical back plate. A bespoke fibreglass liner, tinted to match the stone, and pump pack, are available.

Height 156 cm [5' 1½"]

Width 140 cm [4' 7"]

Depth 86 cm [2' 10"]





**SEATS, BENCHES  
& TABLES**



### **The Quercus Robur High Back Garden Seat**

An Arts & Crafts inspired garden seat carved from 6-year-old air-dried English Oak (Quercus Robur), of plank construction with keyed mortise and tenon joints.

Height 91.5cm [3']  
Width 198cm [6' 6"]  
Depth 74cm [2' 5"]





### **The Quercus Robur Garden Seat**

An Arts & Crafts inspired garden seat carved from 6-year-old air-dried English Oak (Quercus Robur), of plank construction with keyed mortise and tenon joints.

Height 67 cm [2' 2½"]

Width 198 cm [6' 6"]

Depth 74 cm [2' 5"]



### **The Quercus Robur Garden Bench**

An Arts & Crafts inspired garden bench carved from 6-year-old air-dried English Oak (Quercus Robur), of plank construction with keyed mortise and tenon joints.

Height 66 cm [2' 2"]

Width 198 cm [6' 6"]

Depth 52.5 cm [1' 8½"]



**The Quercus Robur  
Garden Dining Table**

An Arts & Crafts inspired garden table carved from 6-year-old air-dried English Oak (Quercus Robur), joined by the distinctive pegged mortise and tenon joints. This table is made to last outside and will weather in time to a silver grey.

Height 72.5 cm [2' 4½"]  
Depth 102 cm [3' 4"]  
Length 274 cm [9']  
Custom sizes available.



**The English Oak  
Garden Dining Table with  
Natural Limestone Top**

A mortise and tenoned English oak base supporting a solid natural limestone top.

Height 71 cm [2' 4"]

Length 210 cm [6' 10¾"]

Depth 90 cm [2' 11½"]



**The English Oak  
Garden Dining Table with  
Arabesque Marble Top**

A mortise and tenoned English oak base supporting a solid Italian Arabesque marble top.

Height 71 cm [2' 4"]

Length 210 cm [6' 10<sup>3</sup>/<sub>4</sub>"]

Depth 90 cm [2' 11<sup>1</sup>/<sub>2</sub>"]



### **The Curved Neo-Classical Seat**

A hand carved natural limestone park seat of curved form having panelled back with central roundel, scrolled arm supports and volute feet.

Height 100 cm [3' 3"]

Width 313 cm [9' 9"]

Depth 53 cm [1' 9"]



### **The Neo-Classical Seat**

A hand carved natural limestone seat having panelled back with central roundel, dentil moulded arm supports and feet with inswept plinth bases.

Height 102 cm [3' 4"]

Width 166.5 cm [5' 5½"]

Depth 51.5 cm [1' 8¼"]



### **The Classic Curved Stone Bench**

A hand carved natural limestone bench having fluted supports and shaped seat.

Height 48cm [1'7"]

Width 140cm [4'7"]

Depth 41cm [1'4"]





### **The Classic Straight Stone Bench**

A hand carved natural limestone bench having rectangular top on fluted shaped supports.

Height 48 cm [1'7"]

Width 140 cm [4'7"]

Depth 41 cm [1'4"]





**SUNDIALS &  
ARMILLARIES**



## The Inverted Sundial Pedestal

A hand carved natural limestone sundial pedestal of tapering form, available with choice of armillary sphere.



With Zenith  
Armillary Sphere

Overall height  
178 cm [5' 10"]

Square at base  
34 cm [1' 1½"]

Sphere diameter  
47 cm [1' 6½"]



With Greenwich  
Armillary Sphere

Overall height  
198 cm [6' 6"]

Square at base  
34 cm [1' 1½"]

Sphere diameter  
70 cm [2' 3½"]



With Holborn  
Armillary Sphere

Overall height  
229 cm [7' 6"]

Square at base  
34 cm [1' 1½"]

Sphere diameter  
94 cm [3' 1"]

**The Solstice  
Sundial Pedestal**

A hand carved natural limestone sundial pedestal of elegant baluster form. A choice of dial plate or armillary sphere is available.

**With Thomas Wright  
Dial Plate**

Overall height  
121 cm [3' 11½"]  
Square at base  
36 cm [1' 2"]

**With Zenith Armillary  
Sphere**

Overall height  
178 cm [5' 10"]  
Square at base  
36 cm [1' 2"]





### **The Portmeirion Column with Zenith Armillary Sphere**

Taking inspiration from Clough Williams-Ellis' 'fantastic' creation, this item is pure folly. The column and base are hand carved in natural limestone and surmounted by a verdigris bronze armillary sphere.

Overall height  
356 cm [11' 8"]

Width at base  
44 cm [1' 5½"]









Image courtesy of Butter Wakefield Garden Design

**The William IV  
Sundial Pedestal**

An age patinated artificial  
stone sundial pedestal,  
available with choice of  
armillary sphere.



With Zenith  
Armillary Sphere

Overall height  
171 cm [5' 7¼"]  
Square at base  
68 cm [2' 2½"]  
Sphere diameter  
47 cm [1' 6½"]



With Greenwich  
Armillary Sphere

Overall height  
191 cm [6' 3¼"]  
Square at base  
68 cm [2' 2½"]  
Sphere diameter  
70 cm [2' 3½"]



With Holborn  
Armillary Sphere

Overall height  
222 cm [7' 3½"]  
Square at base  
68 cm [2' 2½"]  
Sphere diameter  
94 cm [3' 1"]



**The Thomas Wright  
Sundial Plate**

A verdigris bronze sundial plate being a faithful copy of the 18th century original by Thomas Wright Instrument Maker to George II.

Height  
20 cm [8"]  
Diameter  
31 cm [1']



**The Zenith  
Armillary Sphere**

A verdigris bronze armillary sphere, pierced with an arrow and calibrated with the hours. Mounted upon a bell shaped support.

Overall height  
74 cm [2' 5"]  
Sphere diameter  
47 cm [1' 6½"]  
Diameter at base  
17 cm [6½"]



**The Greenwich  
Armillary Sphere**

A verdigris bronze armillary sphere, pierced with an arrow and calibrated with the hours. Mounted upon a bell shaped support.

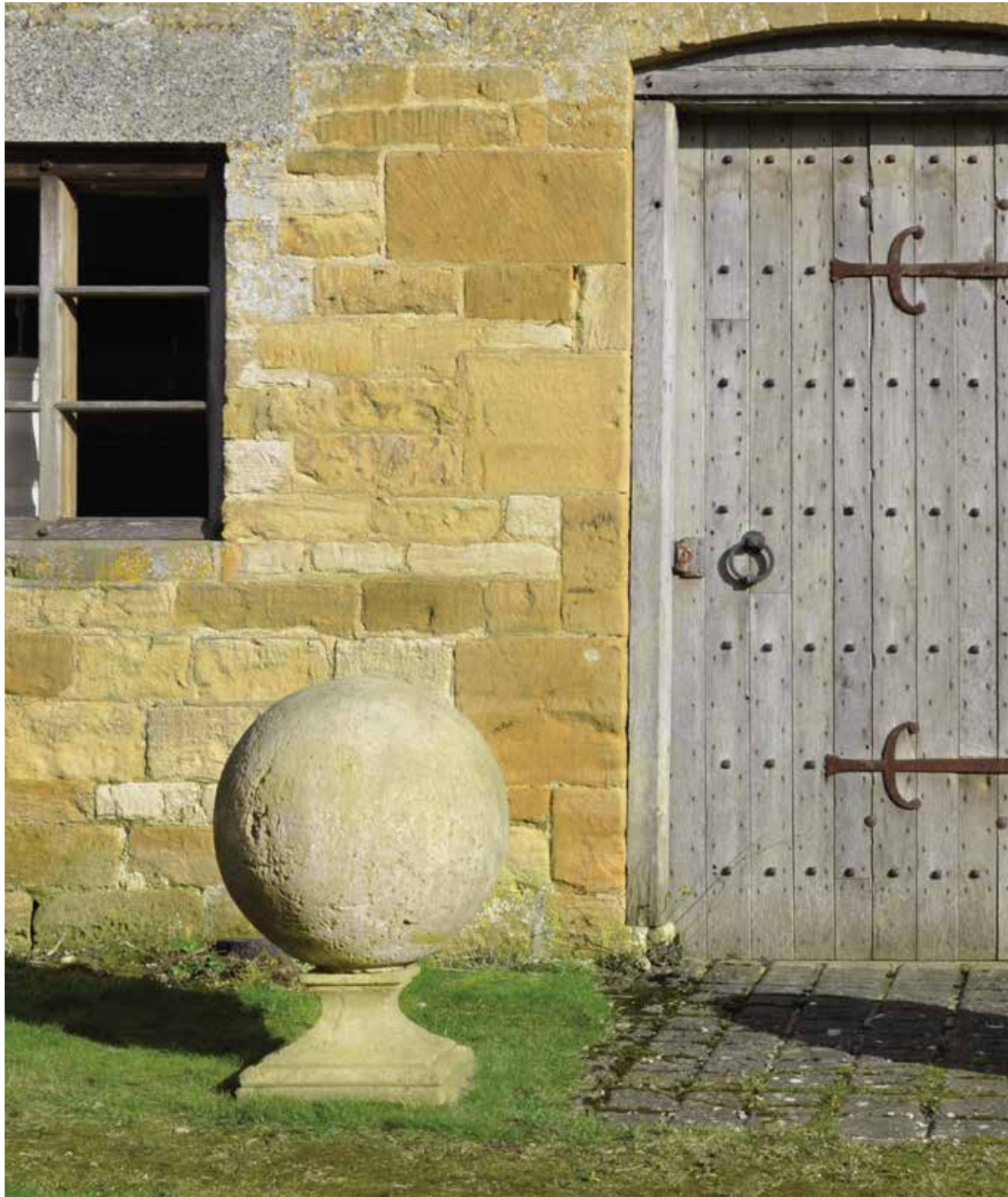
Overall height  
94 cm [3' 1"]  
Sphere diameter  
70 cm [2' 3½"]  
Diameter at base  
17 cm [6½"]



**The Holborn  
Armillary Sphere**

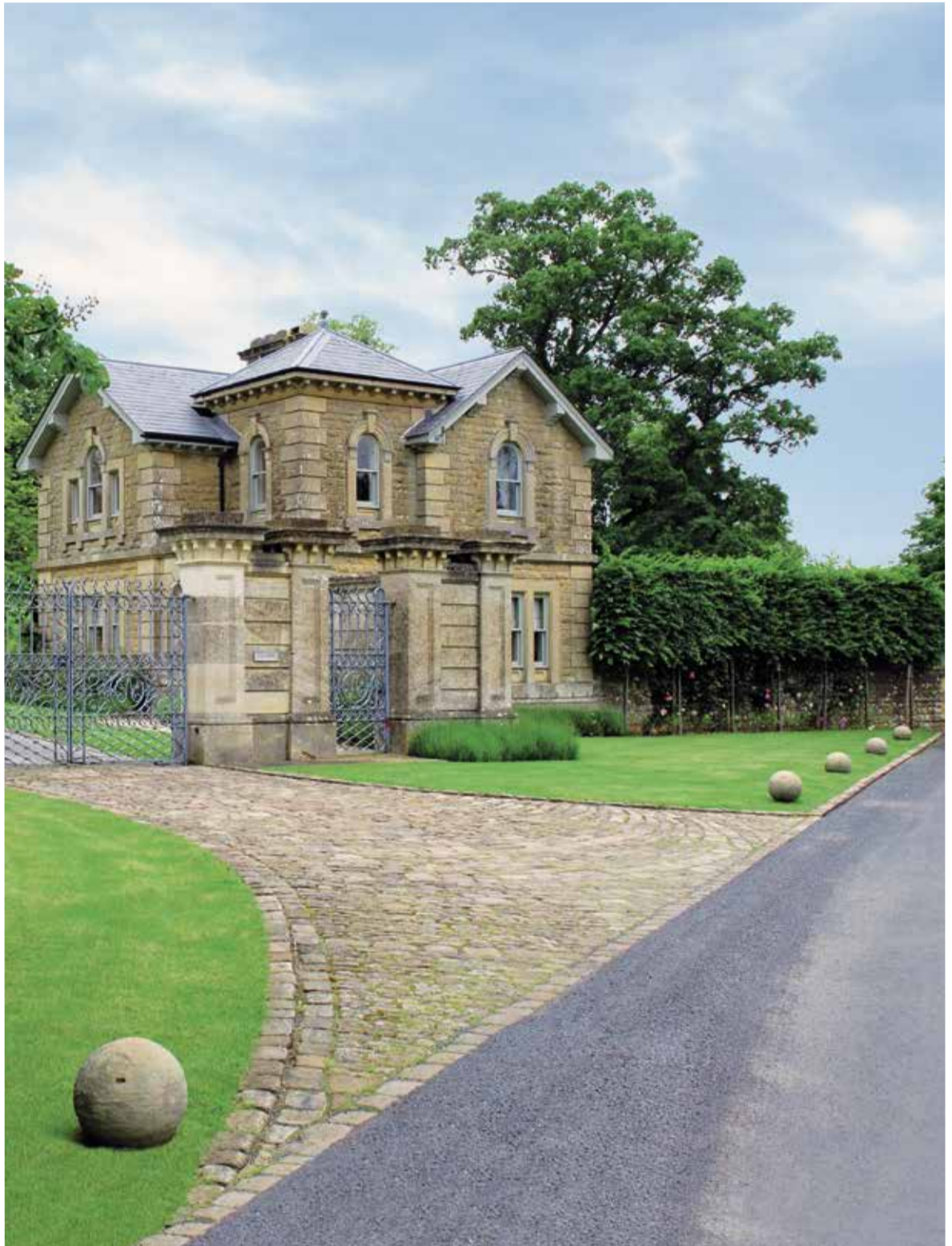
A verdigris bronze oversized armillary sphere, pierced with a decorative arrow and calibrated with the hours. Mounted upon a bell shaped support.

Overall height  
125 cm [4' 1"]  
Sphere diameter  
94 cm [3' 1"]  
Diameter at base  
17 cm [6½"]





**SPHERES &  
FINIALS**







**The Sphere**  
**Small**

An age patinated artificial stone sphere. Perfect for driveway edging or as finials.

Diameter 38cm [1'3"]



### **The Sphere**

#### **Medium**

An age patinated artificial stone sphere. Perfect for driveway edging or as finials.

Diameter 45.5 cm [1' 6"]



### **The Sphere**

#### **Large**

An age patinated artificial stone sphere. Perfect for driveway edging or as finials.

Diameter 56 cm [1' 10"]



**The Sphere Finial**  
**Medium**

An age patinated artificial  
stone sphere raised upon  
square waisted socle.

Height 71 cm [2' 4"]

Sphere diameter 45.5 cm [1' 6"]

Square at base 38 cm [1' 3"]



**The Sphere Finial  
Large**

An age patinated artificial stone sphere raised upon square waisted socle.

Height 80 cm [2' 7½"]

Sphere diameter 56 cm [1' 10"]

Square at base 38 cm [1' 3"]





### **The Heritage Finial**

An age patinated artificial stone lidded urn having circular socle and square base. The campana shaped body having lobed decoration to the bowl, the shaped lid surmounted by a finial.

Height 84 cm [2' 9½"]

Diameter 56 cm [1' 10"]

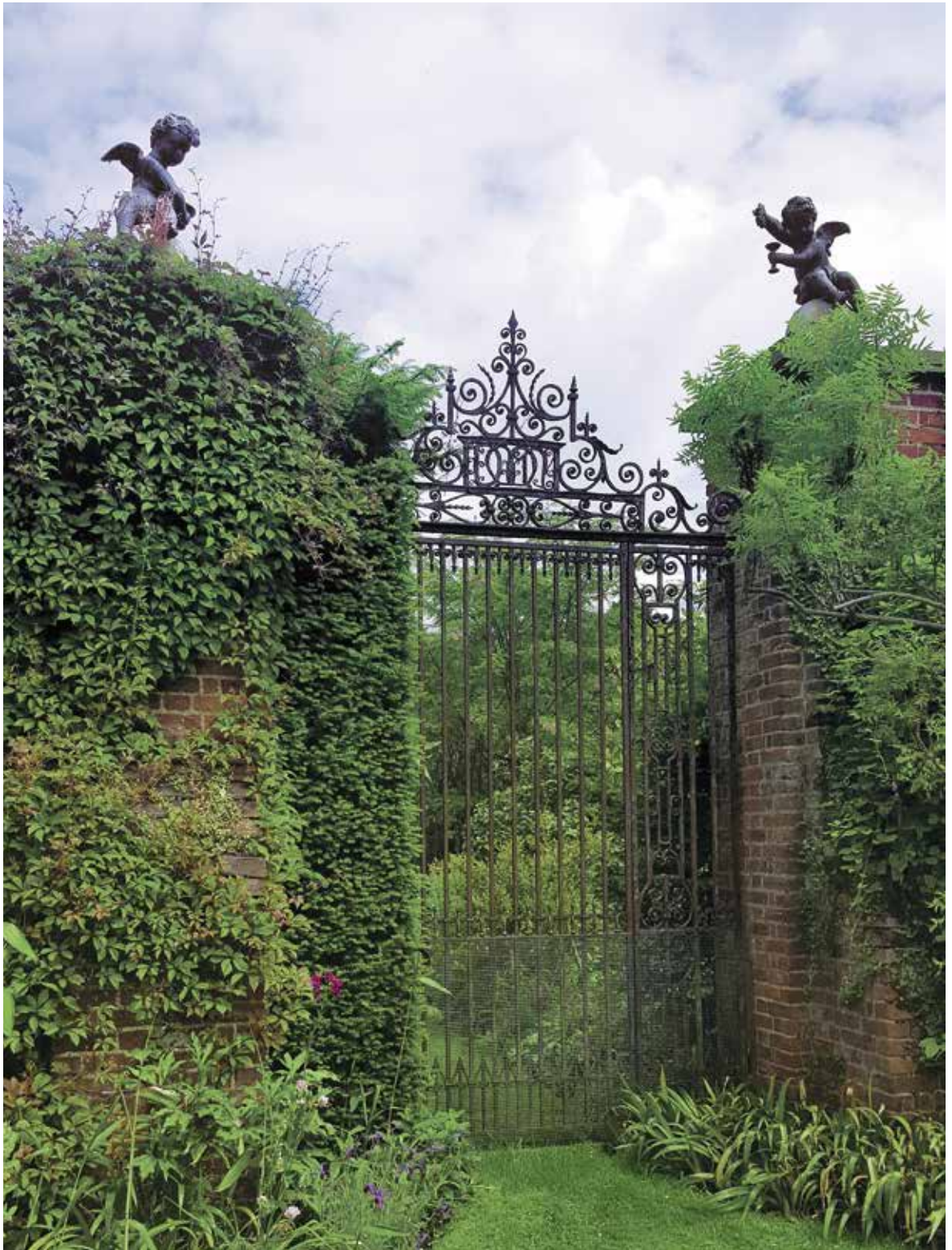
Square at base 30cm [1']

### **The Heritage Plinth**

An age patinated artificial stone Neo-classical plinth after the original by Austin and Seeley.

Height 91 cm [3']

Square at base 48cm [1' 7"]







**The Winged Lead  
Putti Finials**

A pair of winged lead Putti seated upon artificial stone spheres, after the 18th century originals.

Height 86 cm [2'10"]

Width 61 cm [2']





**GARDEN  
ORNAMENT  
& GARDEN  
STRUCTURES**



**'Rudolph' The  
Rusty Reindeer**

A rusty iron reindeer,  
available singly or as a herd.

Height 75 cm [2' 5½"]

Width 71 cm [2' 4"]



### **The Rusty Blooms**

An assemblage of rusty iron tulips with stems and leaves, creating a flexible sculptural installation.

Height 122cm [4']

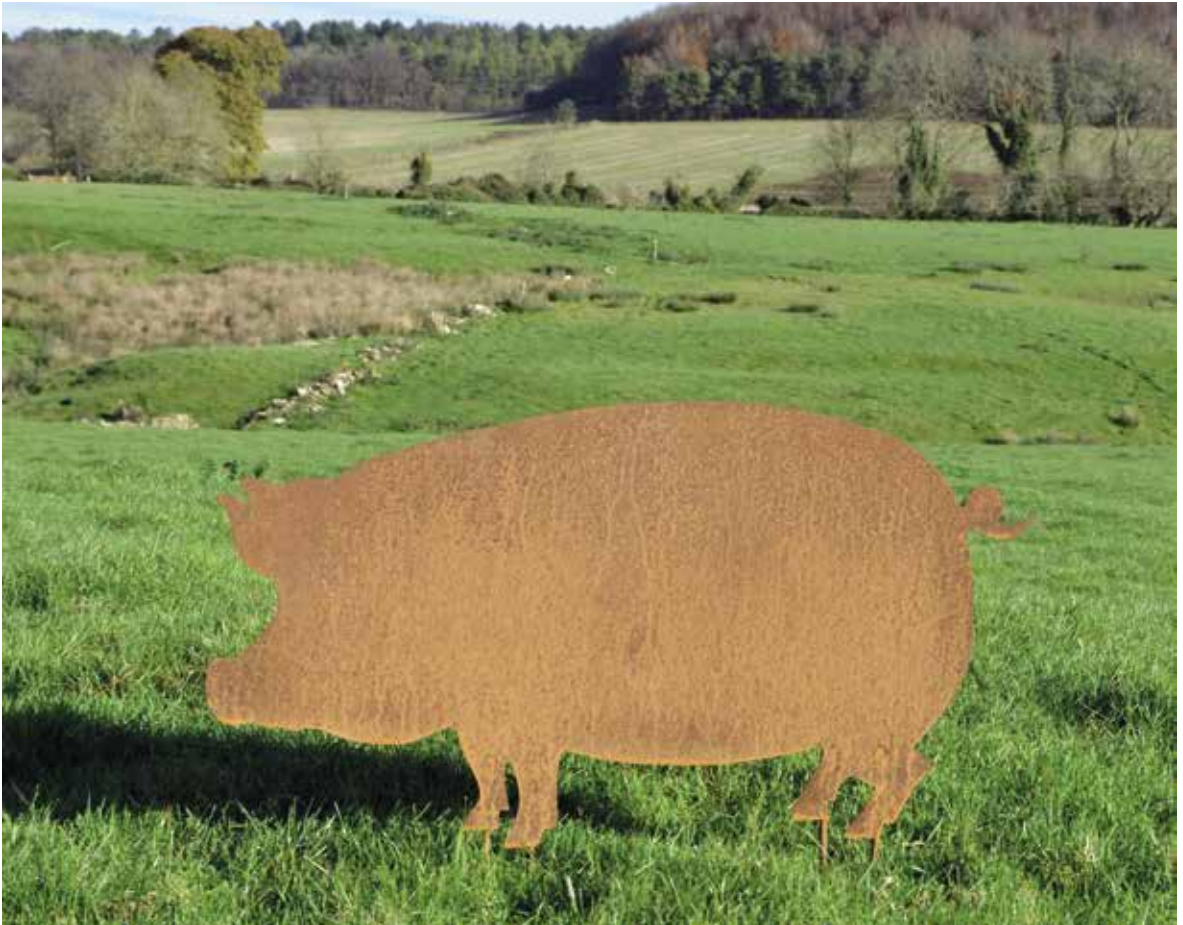


**'Dolly' The Rusty  
Sheep**

A rusty iron sheep,  
available singly or as a flock.

Height 51 cm [1' 8"]

Width 55 cm [1' 9½"]



**'Colin' The Rusty Pig**

A rusty iron pig, available singly or as a sounder.

Height 48cm [1'7"]

Width 94cm [3'1"]



### **The Reclining Fawn**

An artificial stone statue depicting a reclining fawn with raised head, alert ears and small lead antlers.

Height 69cm [2' 6"]

Length 102cm [3' 4"]

Width 41cm [1' 4"]





### **The Bird Bath with Equatorial Sundial**

An age patinated artificial stone bird bath; the shallow circular bowl supports an equatorial dial calibrated with the hours, raised upon an ornate pedestal having acanthus decorations with a circular foot and a square base.

Height 137cm [4'6"]

Diameter 80cm [2'7½"]

Square at base 45cm [1'6"]



**The Tree of Life  
Wall Panel**

A hand punched and finished decorative wall panel incorporating a tree with birds of paradise.

Diameter 86.5cm [2' 10"]

*Please note that this item will rust in time when outside*



### **The Obelisk**

A hand carved natural limestone obelisk of tapering square form raised upon a panelled square base supported by four spheres.

Height 186 cm [6' 1½"]

Width 36 cm [1'2"]

Depth 36 cm [1'2"]

### **The Old Parliament Wellhead**

An age patinated artificial stone wellhead, cast from an original Houses of Parliament element.

Height 200 cm [6' 6¾"]

Width 145 cm [4' 9"]





### **The Octagonal Vine Wellhead**

A hand carved natural limestone wellhead with stone step, wrought iron overthrow, pulley and chain.

Height 254 cm [8' 4"]

Width 142 cm [4' 8"]



## **The Pergola**

Bespoke commissions undertaken to supply hand carved natural limestone columns with English oak trellis.



**Bespoke Commissions  
Undertaken**

Illustrated – Royal Signals  
Memorial at The National  
Memorial Arboretum,  
Alrewas, Staffordshire,  
England.







**PRICING &  
INFORMATION**

## PRICE LIST 2019

PAGE NO.	PLANTERS	PRICE (EXCL. VAT)
5	The Sissinghurst Castle Garden Copper Planter	£ 2,400.00
8	The Circular Copper Planter – Small	£ 800.00
9	The Circular Copper Planter – Medium	£ 1,300.00
10	The Circular Copper Planter – Large	£ 1,700.00
11	The Circular Copper Planter – Large <i>Rolled Edge</i>	£ 1,850.00
12	The Circular Copper Planter – Very Large	£ 2,200.00
16	The Square Copper Planter – Small	£ 900.00
17	The Square Copper Planter – Medium	£ 1,400.00
18	The Square Copper Planter – Large	£ 1,800.00
19	The Square Copper Planter – Very Large	£ 2,400.00
22	The Rectangular Copper Planter – Small Narrow	£ 2,000.00
	The Rectangular Copper Planter – Small Wide	£ 2,200.00
23	The Rectangular Copper Planter – Medium Narrow	£ 2,600.00
	The Rectangular Copper Planter – Medium Wide	£ 2,800.00
24	The Rectangular Copper Planter – Large Narrow	£ 3,200.00
	The Rectangular Copper Planter – Large Wide	£ 3,600.00
27	The Courtyard Copper Planter – Small	£ 2,200.00
27	The Courtyard Copper Planter – Medium	£ 2,800.00
27	The Courtyard Copper Planter – Large	£ 3,600.00
28	The Terrace Copper Planter	£ 1,600.00
32	The Estate Lead Planter – Small	£ 1,800.00
33	The Estate Lead Planter – Medium	£ 2,600.00
34	The Estate Lead Planter – Large	£ 3,600.00
35	The Estate Lead Planter – Very Large	£ 4,600.00
36	The Townhouse Lead Planter – Small	£ 1,800.00
36	The Townhouse Lead Planter – Medium	£ 2,400.00
36	The Townhouse Lead Planter – Large	£ 3,000.00
38	The Bromsgrove Guild Lead Planter	£ 1,800.00
39	The Lattice Vine Lead Planter	£ 1,800.00

<b>PAGE NO.</b>	<b>FOUNTAINS &amp; POOL SURROUNDS</b>	<b>PRICE (EXCL. VAT)</b>
42	The Two Tier Fountain	£ 6,600.00
	The Two Tier Fountain Pump Pack	£ 400.00
43	The Decorative Circular Pool Surround	£ 4,000.00
44	The Great Westwood Pool Surround	£ 6,000.00
45	The Single Tier Fountain	£ 2,800.00
	The Single Tier Fountain Pump Pack	£ 300.00
46	The Circular Pool Surround	£ 3,600.00
47	The Square Pool Surround	£ 3,600.00
48	The Large Single Tier Fountain	£ 3,800.00
	The Large Single Tier Fountain Pump Pack	£ 400.00
49	The Large Low Single Tier Fountain	£ 3,400.00
	The Large Low Single Tier Fountain Pump Pack	£ 400.00
50	The Wall Fountain with Lion Mask	£ 2,600.00
	The Wall Fountain with Lion Mask Pump Pack	£ 300.00
51	The Onslow Park Wall Fountain with Lead Spout	£ 5,600.00
	The Onslow Park Wall Fountain Fibreglass Liner	£ 600.00
	The Onslow Park Wall Fountain Pump Pack	£ 300.00

<b>PAGE NO.</b>	<b>SEATS, BENCHES &amp; TABLES</b>	<b>PRICE (EXCL. VAT)</b>
54	The Quercus Robur High Back Garden Seat	£ 5,600.00
55	The Quercus Robur Garden Seat	£ 4,400.00
56	The Quercus Robur Garden Bench	£ 3,600.00
57	The Quercus Robur Garden Dining Table 9' [ 274 cm ] seats 10	£ 6,800.00
58	The English Oak Garden Dining Table with Natural Limestone Top	£ 3,400.00
59	The English Oak Garden Dining Table with Arabesque Marble Top	£ 3,800.00
60	The Curved Neo-Classical Seat	£ 5,800.00
61	The Neo-Classical Seat	£ 3,800.00
62	The Classic Curved Stone Bench	£ 800.00
63	The Classic Straight Stone Bench	£ 800.00
<b>SUNDIALS &amp; ARMILLARIES</b>		
67	The Inverted Sundial Pedestal with Zenith Armillary Sphere	£ 1,800.00
67	The Inverted Sundial Pedestal with Greenwich Armillary Sphere	£ 2,000.00
67	The Inverted Sundial Pedestal with Holborn Armillary Sphere	£ 2,200.00
68	The Solstice Sundial Pedestal with Thomas Wright Sundial Plate	£ 1,600.00
69	The Solstice Sundial Pedestal with Zenith Armillary Sphere	£ 1,800.00
70	The Portmeirion Column with Zenith Armillary Sphere	£ 2,800.00
73	The William IV Sundial Pedestal with Zenith Armillary Sphere	£ 2,600.00
73	The William IV Sundial Pedestal with Greenwich Armillary Sphere	£ 2,800.00
73	The William IV Sundial Pedestal with Holborn Armillary Sphere	£ 3,000.00
74	The Thomas Wright Sundial Plate	£ 700.00
74	The Zenith Armillary Sphere	£ 900.00
75	The Greenwich Armillary Sphere	£ 1,100.00
75	The Holborn Armillary Sphere	£ 1,300.00

<b>PAGE NO.</b>	<b>SPHERES &amp; FINIALS</b>	<b>PRICE (EXCL. VAT)</b>
79	The Sphere – Small	£ 350.00
80	The Sphere – Medium	£ 500.00
81	The Sphere – Large	£ 700.00
82	The Sphere Finial – Medium	£ 800.00
83	The Sphere Finial – Large	£ 1,000.00
85	The Heritage Finial	£ 1,200.00
85	The Heritage Plinth	£ 1,200.00
87	The Winged Lead Putti Finials	£ 3,800.00
	<b>GARDEN ORNAMENT &amp; GARDEN STRUCTURES</b>	
90	'Rudolph' The Rusty Reindeer – each	£ 200.00
91	The Rusty Blooms – each	£ 40.00
92	'Dolly' The Rusty Sheep – each	£ 120.00
93	'Colin' The Rusty Pig – each	£ 250.00
94	The Reclining Fawn	£ 1,600.00
95	The Bird Bath with Equatorial Sundial	£ 2,600.00
96	The Tree of Life Wall Panel	£ 300.00
97	The Obelisk	£ 1,800.00
98	The Old Parliament Wellhead	£ 3,600.00
99	The Octagonal Vine Wellhead	£ 4,600.00

## ARCHITECTURAL HERITAGE FURTHER AREAS OF EXPERTISE



## ARCHITECTURAL HERITAGE

ANTIQUE | GARDEN | ORNAMENT

With over 40 years' experience specialising in Antique Garden Ornament, Statuary and Fountains, Architectural Heritage carry an extensive inventory to supply clients with the finest examples of antique garden ornament on the market today.

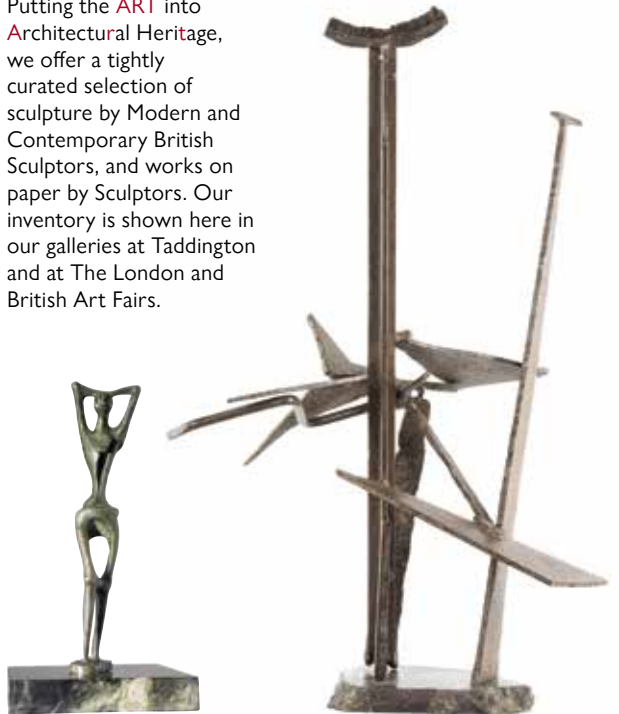


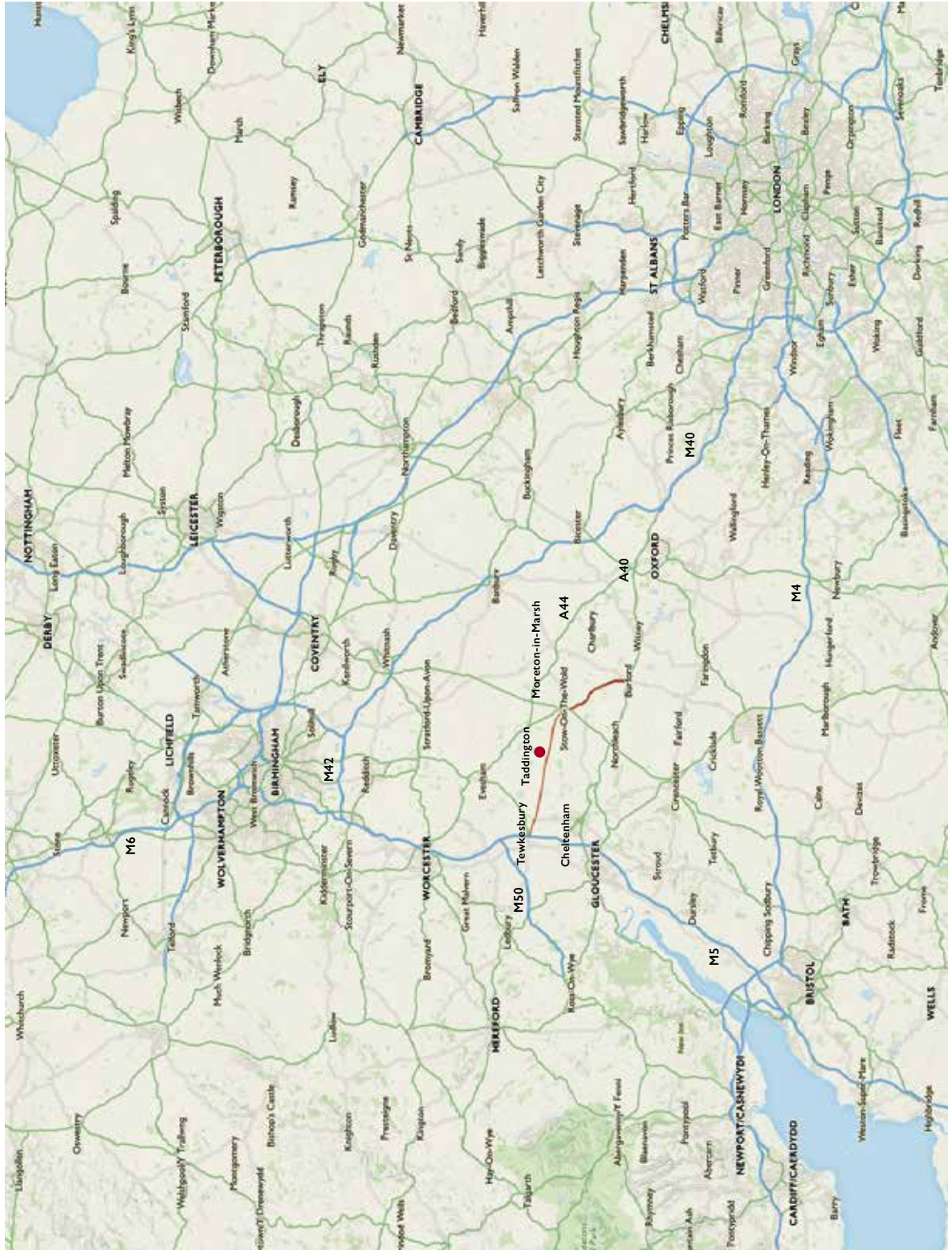


## ARCHITECTURAL HERITAGE

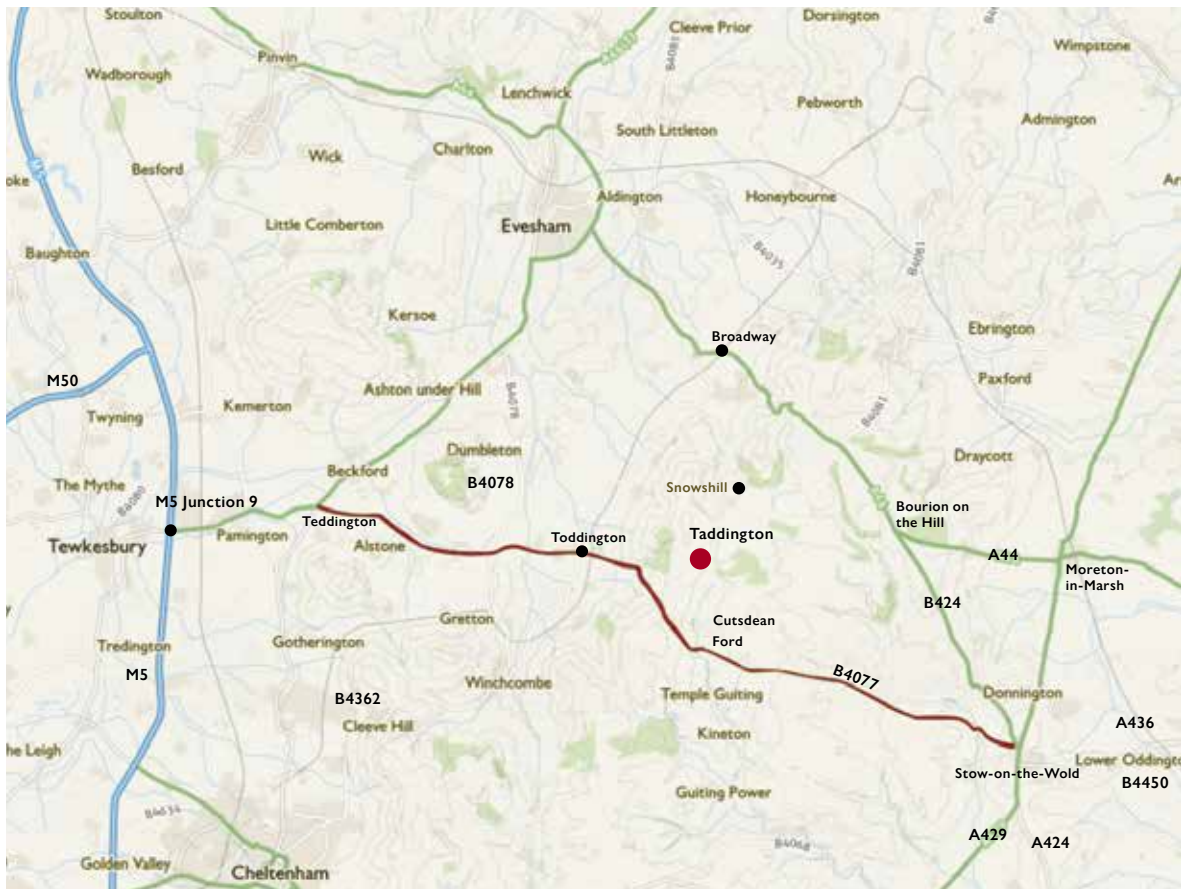
MODERN | BRITISH | SCULPTURE

Putting the **ART** into **Architectural Heritage**, we offer a tightly curated selection of sculpture by Modern and Contemporary British Sculptors, and works on paper by Sculptors. Our inventory is shown here in our galleries at Taddington and at The London and British Art Fairs.









## Location

Taddington Manor  
Taddington  
Nr. Cutsdean  
Gloucestershire  
England GL54 5RY

Architectural Heritage is situated in the grounds of Taddington Manor, in the tiny hamlet of Taddington. The galleries and garden are open year round.

We are one hour away from Oxford, Bristol and Birmingham, and two hours from London.



The British Antique Dealers' Association



LAPADA

The Association of Art and Antique Dealers



The Cotswold Art and Antique Dealers' Association

SALVO

The Architectural Dealers' Association



Anti Copying in Design

# ARCHITECTURAL HERITAGE

GARDEN | SCULPTURE | INTERIOR

Taddington Manor  
Taddington, Nr. Cutsdean  
Gloucestershire  
England GL54 5RY  
office@architectural-heritage.co.uk  
www.architectural-heritage.co.uk  
Tel: +44 [0] 1386 584 414

9.00am – 5.00pm Monday – Friday  
Saturdays by Appointment  
Closed Sundays and Bank Holidays



Designed & typeset by etal design consultants.  
Printed in Great Britain by The Westdale Press Limited,  
on Edixion Offset. Edixion is produced from sustainable  
sources and is fully recyclable.

Copyright © Architectural Heritage 2019. All rights  
reserved. No part of this publication may be reproduced,  
transmitted, or stored in a retrieval system, in any form,  
or by any means, without permission in writing from  
Architectural Heritage.

