

ARCHITECTURAL HERITAGE

GARDEN | SCULPTURE | INTERIOR



ARCHITECTURAL HERITAGE

GARDEN | SCULPTURE | INTERIOR

It is with some degree of pride that we present here our 2018 Garden Catalogue. Every year we look to develop new items to enhance the collection under the broad umbrella of *Classic Modern* design. I interpret this as being timeless design manufactured to the highest quality to fit within both traditional and contemporary garden schemes.

All the products featured in this catalogue are, to a varying degree, inspired by the past and similarly fabricated in a traditional way, in the best and most appropriate materials by highly skilled craftsmen. Our quest is to preserve the legacy of the *Cotswold Arts & Crafts* tradition and to forge our own ethos – one where we look to fabricate garden ornament, planters and fountains for not just one lifetime, but for future generations to enjoy. This is what drives Architectural Heritage forward as we endeavour to be the best in what we do, by supplying exceptional quality garden ornament, coupled with second-to-none customer service, for our many loyal clients.

Alongside our garden collection we look to present a diverse selection of carefully curated antique garden ornament, sculpture and interiors. Our extensive inventory can be seen on our website and for email updates (about once every two months) a latest stock newsletter is available for all our registered clients – please do join by visiting our website on www.architectural-heritage.co.uk.

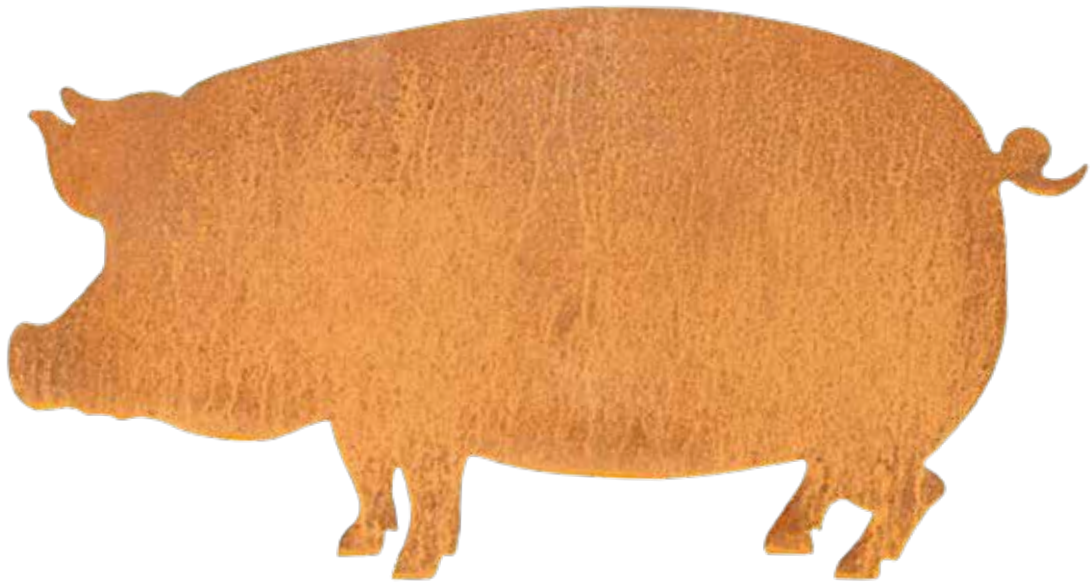
It only leaves me to thank you for your interest and I look forward to being of assistance.

With kind regards

Alex Puddy

ARCHITECTURAL HERITAGE

GARDEN | SCULPTURE | INTERIOR







**FOUNTAINS
& POOL
SURROUNDS**



Installation and photograph by Cotswold Estates and Gardens Ltd

The Two Tier Fountain

A two tier fountain in age patinated artificial stone taken from an 18th century original, each bowl having egg and dart carving to the rim, raised upon baluster pedestals with carved foliage. The upper bowl is surmounted by a pineapple finial. A pump pack is available.

Overall height
8'7" [262cm]
Overall diameter
4'6" [137cm]
Square at base
2'2" [67cm]



Installation and photograph by Cotswold Estates and Gardens Ltd

The Decorative Circular Pool Surround

An age patinated artificial stone circular pool surround having egg and dart decoration.

External diameter
14' [426 cm]

Internal diameter
12' [366 cm]

Height
8½" [22 cm]



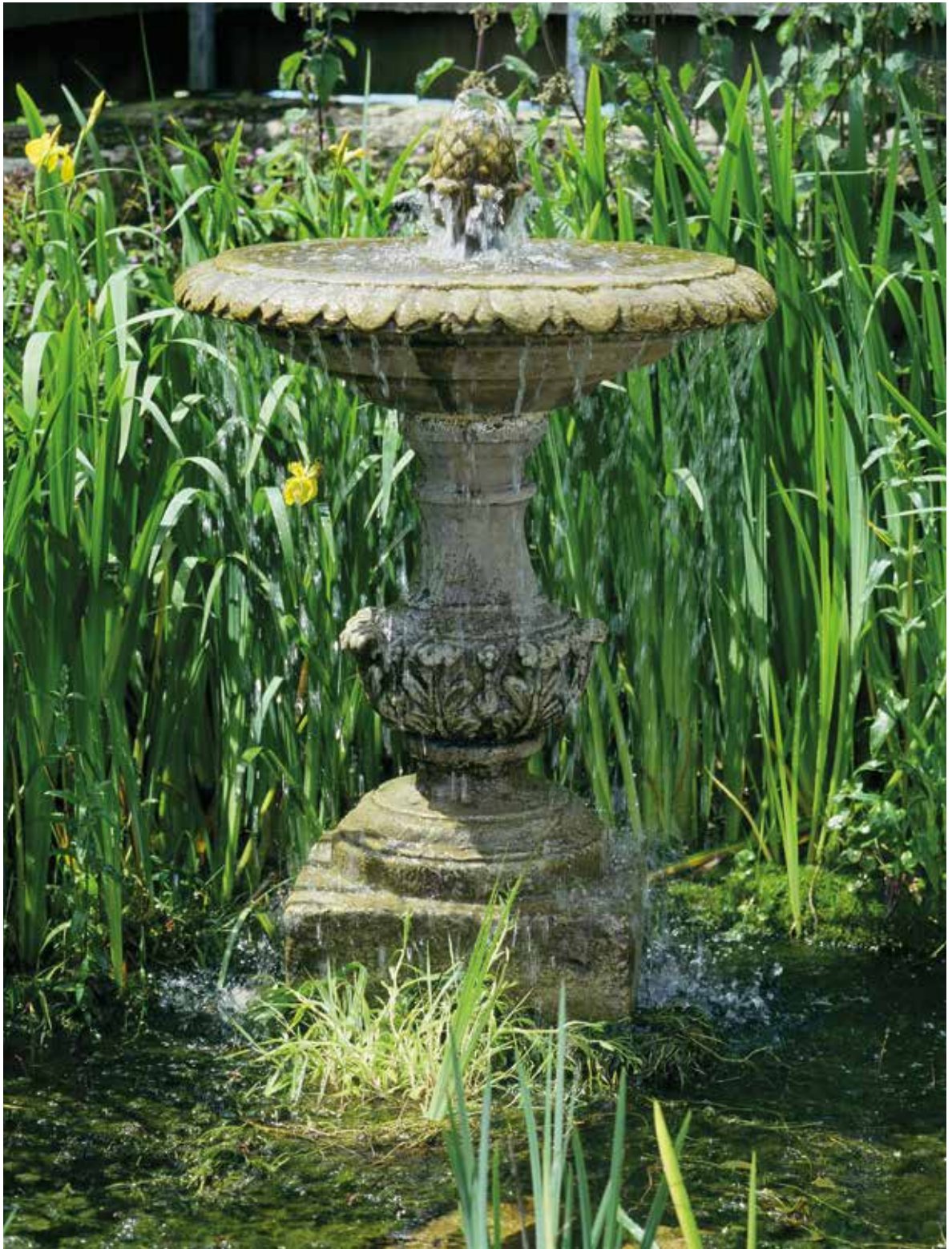


The Great Westwood Pool Surround

A large and impressive
age patinated artificial
stone pool surround at
6 metres diameter.

External diameter
19' 8" [600 cm]

Height
1' 1 $\frac{3}{4}$ " [35 cm]





The Single Tier Fountain

A single tier fountain in age patinated artificial stone, the bowl having egg and dart carving to the rim raised upon a baluster pedestal carved with acanthus foliage, with circular foot and square base. The bowl is surmounted by a spout in the form of a pineapple. A pump pack is available.

Overall height
4' 1" [125 cm]
Overall diameter
2' 7½" [80 cm]
Square at base
1' 6" [45 cm]

The Circular Pool Surround

An age patinated artificial stone circular pool surround.

External diameter
10' 6" [320 cm]
Height
11" [28 cm]



The Square Pool Surround

This age patinated artificial stone pool surround has many possibilities; squares, rectangles and rills. Illustration shows standard size.

Overall width 8' 7" [262 cm]

Height 11" [28 cm]



The Large Single Tier Fountain

A large single tier fountain in age patinated artificial stone, the bowl having egg and dart carving to the rim, raised upon a baluster pedestal carved with acanthus foliage, with circular foot and square base. The bowl is surmounted by a spout in the form of a pineapple. A pump pack is available.

Overall height
5' [152.5cm]

Overall diameter
4' 5" [135cm]

Square at base
2' 2" [67cm]

The Arched Back Wall Fountain

A hand carved natural limestone wall fountain with arched back plate. A pump pack is available.

Height 4' 7¼" [140 cm]

Width 3' 11¼" [120 cm]

Depth 2' 3½" [75 cm]





The Onslow Park Wall Fountain with Lead Spout

A hand carved natural limestone wall fountain having a lead spout centred to the classical back plate. A bespoke fibreglass liner, tinted to match the stone, and pump pack, are available.

Height 5' 5" [165 cm]

Width 4' 7" [140 cm]

Depth 2' 10" [86 cm]



**The Neptune
Wall Fountain with
Lead Spout**

A large hand carved natural limestone wall fountain with lead spout. A pump pack is available.

Height 6'5" [196cm]

Width 9'8" [295cm]

Depth 4'6" [137cm]



The Neptune Wall Fountain

A large hand carved natural limestone wall fountain with central mask of Neptune. A pump pack is available.

Height 6' 5" [196 cm]

Width 9' 8" [295 cm]

Depth 4' 6" [137 cm]



**The River God
Fountain Mask**

Hand carved from
natural limestone.

Height 2' 2" [66 cm]

Width 2' [62 cm]

Depth 6" [16 cm]



The Wall Fountain with Lion Mask

A wall fountain in age patinated artificial stone, having arched back plate inset with a lead lion mask spout, raised above a 'D' shaped bowl with stepped rectangular base. A pump pack is available.

Height 5' [151 cm]

Width 2' 7" [80 cm]

Depth 1' 8" [51 cm]





PLANTERS





The Square Copper Planters

Hand crafted from heavy gauge brass, riveted together and then verdigris patinated to echo the Victorian antique originals.

Small

Height 1' 1 $\frac{3}{4}$ " [35 cm]

Width 1' 9 $\frac{1}{4}$ " [54 cm]

Depth 1' 9 $\frac{1}{4}$ " [54 cm]

Medium

Height 1' 5 $\frac{3}{4}$ " [45 cm]

Width 2' 3" [68.5 cm]

Depth 2' 3" [68.5 cm]

Large

Height 1' 11 $\frac{1}{2}$ " [60 cm]

Width 2' 11 $\frac{1}{4}$ " [89.5 cm]

Depth 2' 11 $\frac{1}{4}$ " [89.5 cm]

Very Large

Height 2' 5" [73.5 cm]

Width 3' 3 $\frac{1}{2}$ " [100.5 cm]

Depth 3' 3 $\frac{1}{2}$ " [100.5 cm]





**The Square
Copper Planter
Small**

Hand crafted from heavy gauge brass, riveted together and then verdigris patinated to echo the Victorian antique originals.

Height 1' 1 $\frac{3}{4}$ " [35 cm]

Width 1' 9 $\frac{1}{4}$ " [54 cm]

Depth 1' 9 $\frac{1}{4}$ " [54 cm]





**The Square
Copper Planter
Medium**

Hand crafted from heavy gauge brass, riveted together and then verdigris patinated to echo the Victorian antique originals.

Height 1' 5 $\frac{3}{4}$ " [45 cm]

Width 2' 3" [68.5 cm]

Depth 2' 3" [68.5 cm]





**The Square
Copper Planter
Large**

Hand crafted from heavy gauge brass, riveted together and then verdigris patinated to echo the Victorian antique originals.

Height 1' 11½" [60 cm]

Width 2' 11¼" [89.5 cm]

Depth 2' 11¼" [89.5 cm]





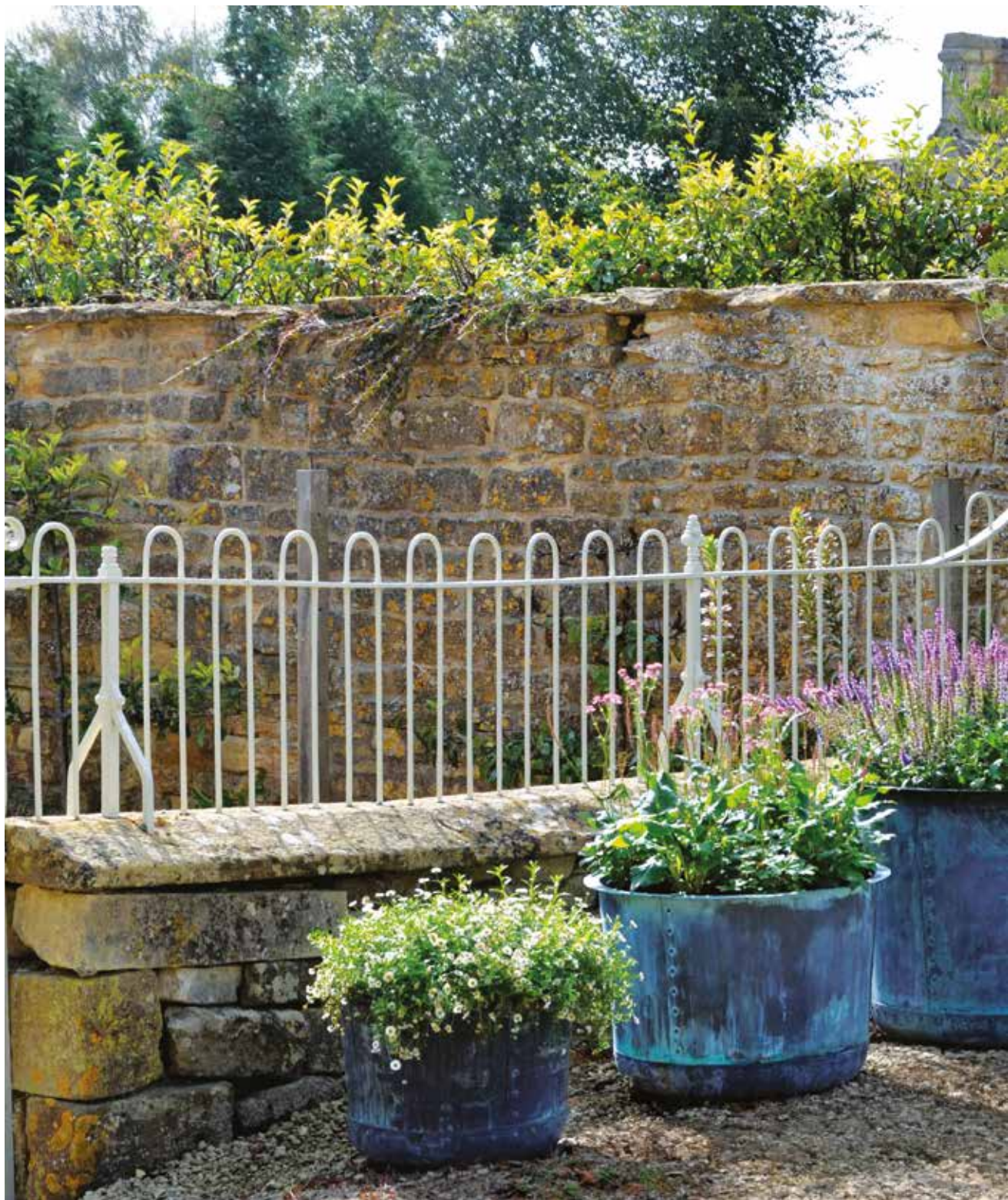
**The Square
Copper Planter
Very Large**

Hand crafted from heavy gauge brass, riveted together and then verdigris patinated to echo the Victorian antique originals.

Height 2' 5" [73.5 cm]

Width 3' 3½" [100.5 cm]

Depth 3' 3½" [100.5 cm]





The Circular Copper Planters

Hand crafted from heavy gauge brass riveted together and then verdigris patinated to imitate the Victorian antique originals.

Small

Height 1' 1 $\frac{3}{4}$ " [35 cm]

Diameter 1' 9 $\frac{1}{4}$ " [54 cm]

Medium

Height 1' 5 $\frac{3}{4}$ " [45 cm]

Diameter 2' 3" [68.5 cm]

Large

Height 1' 11 $\frac{1}{2}$ " [60 cm]

Diameter 2' 11 $\frac{1}{4}$ " [89.5 cm]

Very Large

Height 2' 5" [73.5 cm]

Diameter 3' 3 $\frac{3}{4}$ " [101 cm]





**The Circular
Copper Planter
Small**

Hand crafted from heavy gauge brass, riveted together and then verdigris patinated to imitate the Victorian antique originals.

Height 1' 1 $\frac{3}{4}$ " [35cm]

Diameter 1' 9 $\frac{1}{4}$ " [54cm]



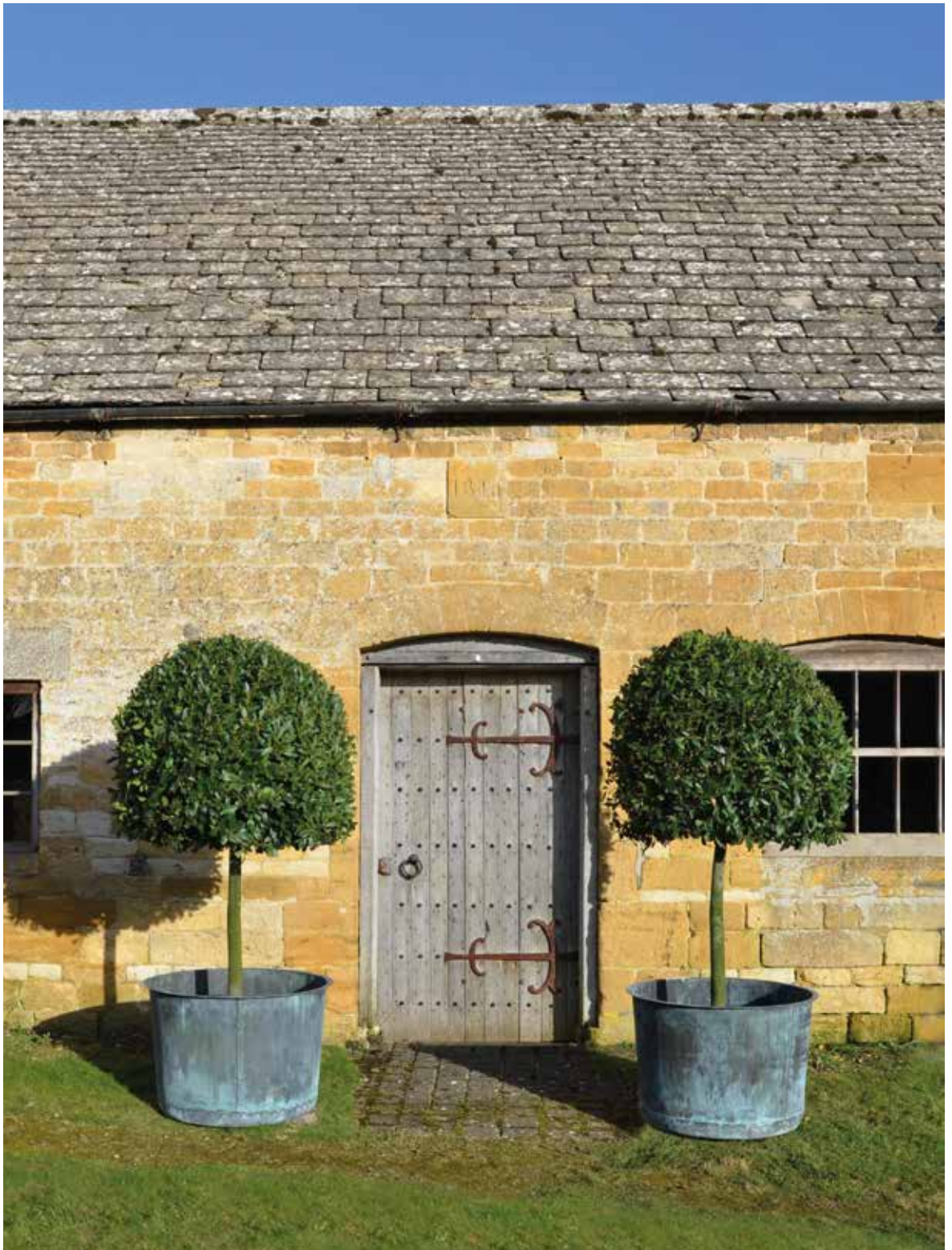


**The Circular
Copper Planter
Medium**

Hand crafted from heavy gauge brass, riveted together and then verdigris patinated to imitate the Victorian antique originals.

Height 1' 5 $\frac{3}{4}$ " [45 cm]

Diameter 2' 3" [68.5 cm]





**The Circular
Copper Planter
Large**

Hand crafted from heavy gauge brass, riveted together and then verdigris patinated to imitate the Victorian antique originals.

Height 1' 11½" [60cm]

Diameter 2' 11¼" [89.5cm]





**The Circular
Copper Planter
Very Large**

Hand crafted from heavy gauge brass, riveted together and then verdigris patinated to imitate the Victorian antique originals.

Height 2' 5" [73.5 cm]

Diameter 3' 3/4" [101 cm]





The Rectangular Copper Planters

Hand crafted from heavy gauge brass, riveted together and then verdigris patinated to echo the Victorian antique originals.

Small

Height 1' 11½" [60 cm]
Length 3' 11¼" [120 cm]

Medium

Height 1' 11½" [60 cm]
Length 5' 10¾" [180 cm]

Large

Height 1' 11½" [60 cm]
Length 7' 2½" [220 cm]

Available in two depths:
Narrow 1' 8½" [52 cm]
Wide 2' 3¼" [69 cm]





**The Rectangular
Copper Planter
Small**

Hand crafted from heavy gauge brass, riveted together and then verdigris patinated to echo the Victorian antique originals.

Height 1' 11½" [60 cm]

Length 3' 11¼" [120 cm]

Available in two depths:

Narrow 1' 8½" [52 cm]

Wide 2' 3¼" [69 cm]





**The Rectangular
Copper Planter
Medium**

Hand crafted from heavy gauge brass, riveted together and then verdigris patinated to echo the Victorian antique originals.

Height 1' 11½" [60 cm]

Length 5' 10¾" [180 cm]

Available in two depths:

Narrow 1' 8½" [52 cm]

Wide 2' 3¼" [69 cm]





**The Rectangular
Copper Planter
Large**

Hand crafted from heavy gauge brass, riveted together and then verdigris patinated to echo the Victorian antique originals.

Height 1' 11½" [60 cm]

Length 7' 2½" [220 cm]

Available in two depths:

Narrow 1' 8½" [52 cm]

Wide 2' 3¼" [69 cm]





The Courtyard Copper Planters

Hand crafted from heavy gauge copper, riveted together and then verdigris patinated to imitate the Victorian antique originals.

Small

Height 1' 7 $\frac{3}{4}$ " [50 cm]
Diameter 3' 6" [107 cm]

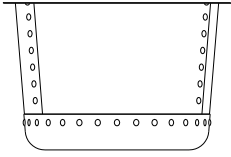
Medium

Height 1' 9 $\frac{1}{2}$ " [55 cm]
Diameter 4' 2" [127 cm]

Large

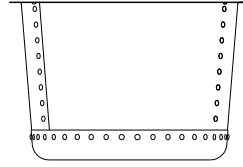
Height 2' 1 $\frac{1}{2}$ " [62 cm]
Diameter 5' 2 $\frac{3}{4}$ " [159.5 cm]

The Circular Copper Planters



Small

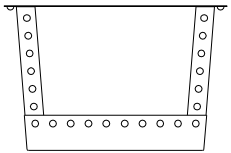
Height 1' 1 $\frac{3}{4}$ " [35 cm] Diameter 1' 9 $\frac{1}{4}$ " [54 cm]



Medium

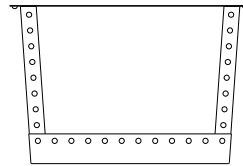
Height 1' 5 $\frac{3}{4}$ " [45 cm] Diameter 2' 3" [68.5 cm]

The Square Copper Planters



Small

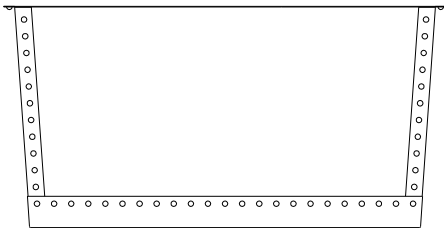
Height 1' 1 $\frac{3}{4}$ " [35 cm] Width 1' 9 $\frac{1}{4}$ " [54 cm]



Medium

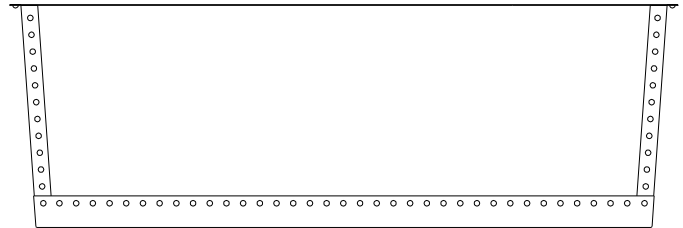
Height 1' 5 $\frac{3}{4}$ " [45 cm] Width 2' 3" [68.5 cm]

The Rectangular Copper Planters



Small

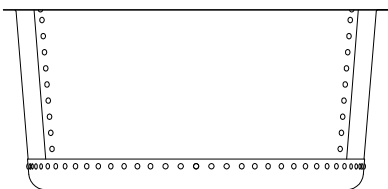
Height 1' 11 $\frac{1}{2}$ " [60 cm] Length 3' 11 $\frac{1}{4}$ " [120 cm]



Medium

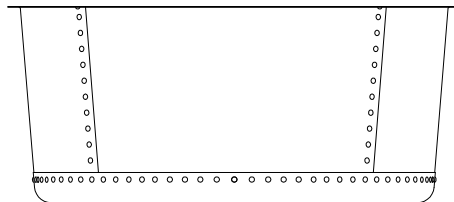
Height 1' 11 $\frac{1}{2}$ " [60 cm] Length 5' 10 $\frac{3}{4}$ " [180 cm]

The Courtyard Copper Planters



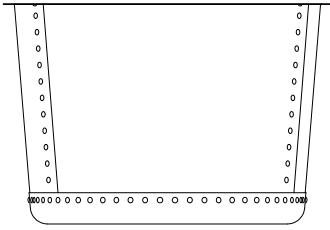
Small

Height 1' 7 $\frac{3}{4}$ " [50 cm] Diameter 3' 6" [107 cm]

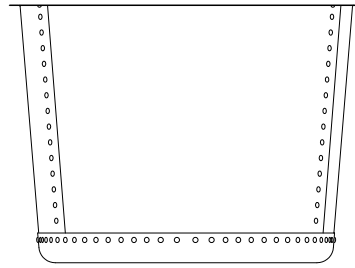


Medium

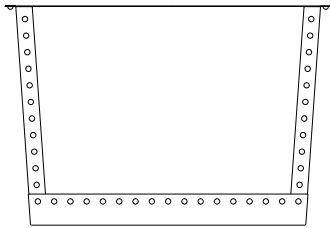
Height 1' 9 $\frac{1}{2}$ " [55 cm] Diameter 4' 2" [127 cm]



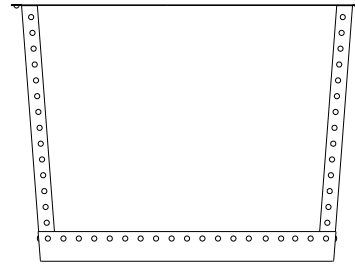
Large
Height 1' 11½" [60cm] Diameter 2' 11¼" [89.5cm]



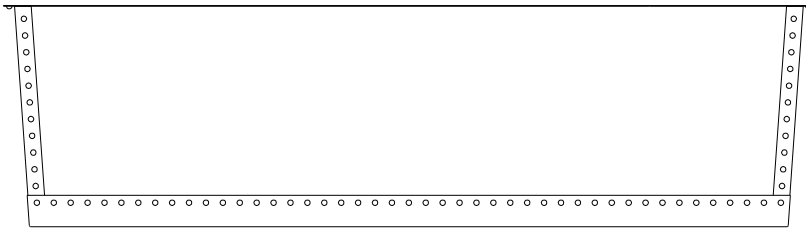
Very Large
Height 2' 5" [73.5cm] Diameter 3' 3¾" [101cm]



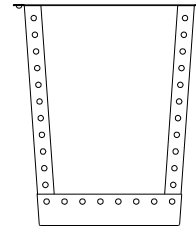
Large
Height 1' 11½" [60cm] Width 2' 11¼" [89.5cm]



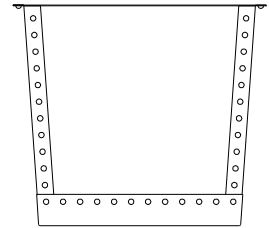
Very Large
Height 2' 5" [73.5cm] Width 3' 3½" [100.5cm]



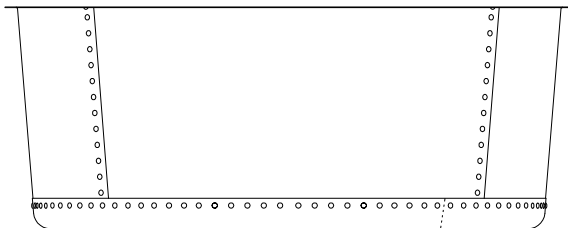
Large
Height 1' 11½" [60cm] Length 7' 2½" [220cm]



Narrow
1' 8½" [52cm]



Wide
2' 3¼" [69cm]



Large
Height 2' ½" [62cm] Diameter 5' 2¾" [159.5cm]





The Lead Planters

A range of hand crafted lead planters to our own designs, with bespoke commissions undertaken.



**The Estate
Lead Planter**

A lead planter ornamented with recessed square panels.

Height 1'7³/₄" [50 cm]

Width 3'4" [101.5 cm]

Depth 1'7³/₄" [50 cm]

Bespoke commissions undertaken.



**The Estate
Lead Planter
Large**

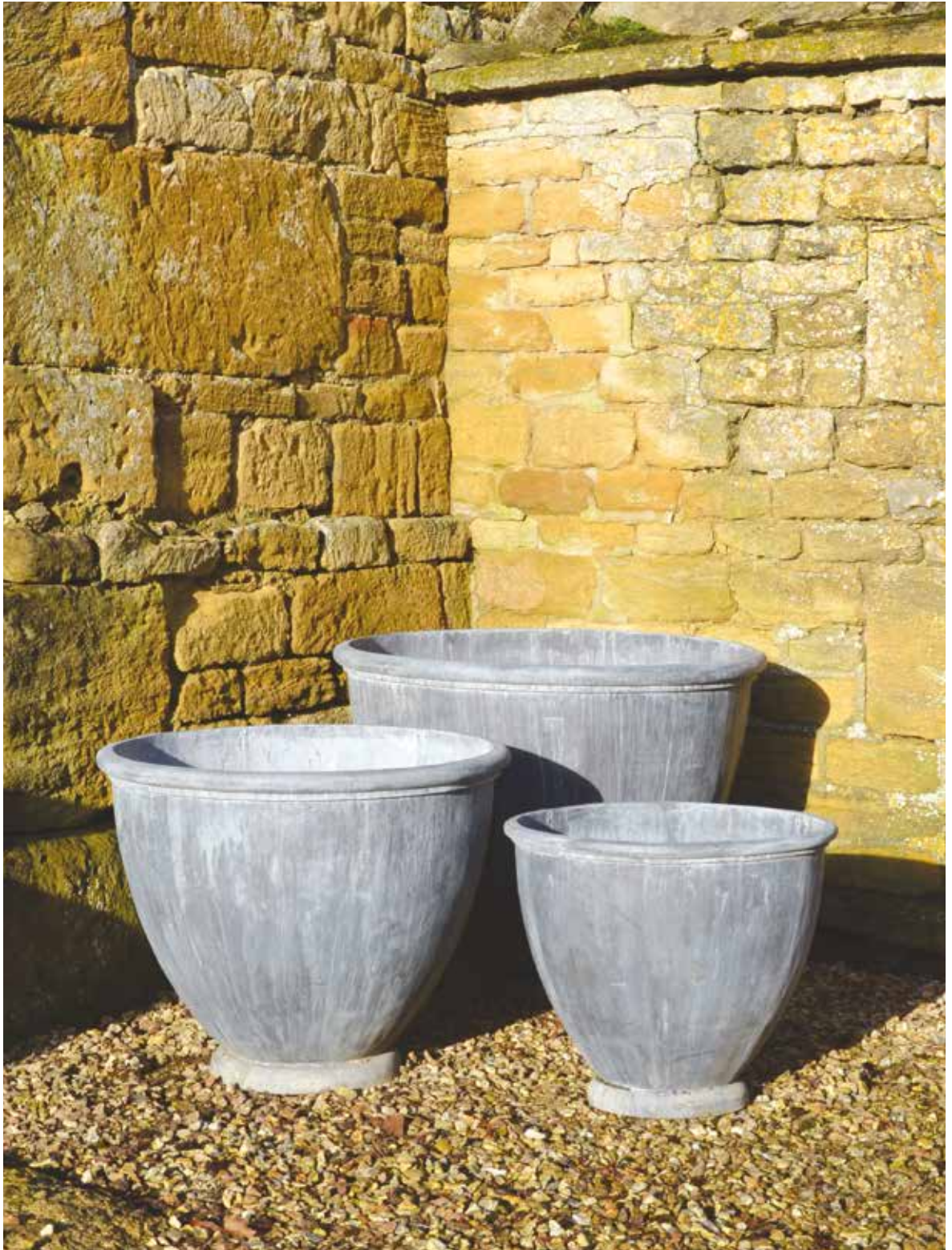
A lead planter ornamented with recessed square panels.

Height 2' 2" [66 cm]

Width 3' 4" [101.5 cm]

Depth 2' 2" [66 cm]

Bespoke commissions undertaken.





**The Townhouse
Lead Planter
Small**

A lead planter of circular form with drainage holes to base.

Height 1'8" [51 cm]

Diameter 2' [61 cm]

**The Townhouse
Lead Planter
Medium**

A lead planter of circular form with drainage holes to base.

Height 2' [61 cm]

Diameter 2' 6" [76 cm]





**The Townhouse
Lead Planter
Large**

A lead planter of circular form with drainage holes to base.

Height 2' 6" [75 cm]

Diameter 3' [91.5 cm]

The Bromsgrove Guild Lead Planter

A faithful copy of an early 20th century model by the Bromsgrove Guild. An eight sided planter embellished with scenes and motifs relating to nature.

Height 1'7" [48cm]
Diameter 1'9" [61cm]



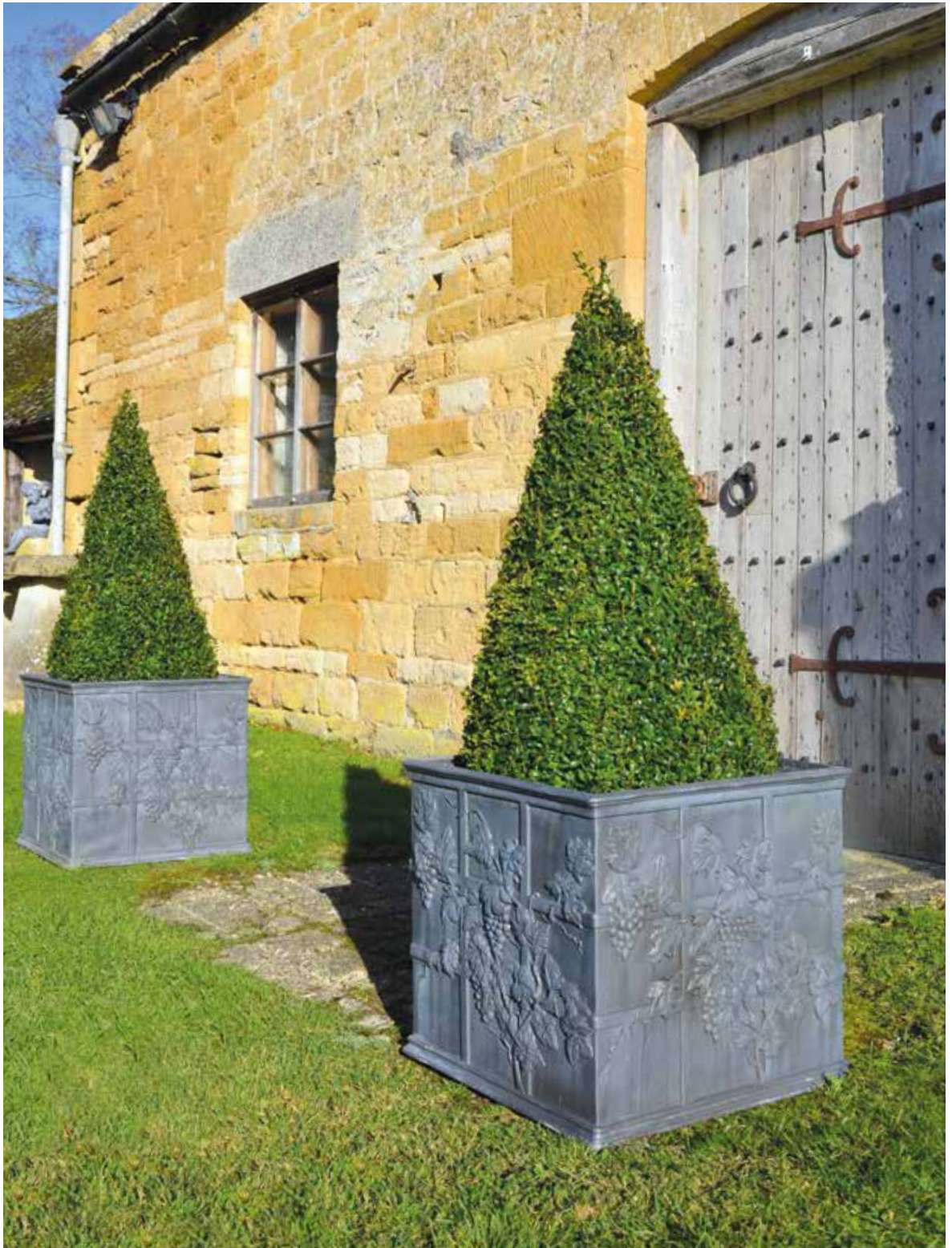


The Cotswold Lion Lead Planter

After the antique original, a fine quality lead garden planter of oval form having applied lion mask below the rim.

Height 1'8" [51 cm]

Diameter 2' [61 cm]





**The Lattice Vine
Lead Planter**

A lead planter of square form embellished with a lattice and vine decorative motif.

Height 1'7" [48 cm]

Width 1'8" [51 cm]

Depth 1'8" [51 cm]





**SEATS, BENCHES
& TABLES**





The Quercus Robur High Back Garden Seat

An Arts & Crafts inspired garden seat carved from 6-year-old air-dried English Oak (Quercus Robur), of plank construction with keyed mortise and tenon joints.

Height 3' [91.5 cm]

Width 6' 6" [198 cm]

Depth 2' 5" [74 cm]



The Quercus Robur Garden Seat

An Arts & Crafts inspired garden seat carved from 6-year-old air-dried English Oak (*Quercus Robur*), of plank construction with keyed mortise and tenon joints.

Height 2' 2½" [67 cm]

Width 6' 6" [198 cm]

Depth 2' 5" [74 cm]



The Quercus Robur Garden Bench

An Arts & Crafts inspired garden bench carved from air-dried English Oak (Quercus Robur), of plank construction with keyed mortise and tenon joints.

Height 2' 2" [66cm]

Width 6' 6" [198cm]

Depth 1' 8½" [52.5cm]



The Curved Neo-Classical Seat

A hand carved natural limestone park seat of curved form having panelled back with central roundel, scrolled arm supports and volute feet.

Height 3' 3" [100cm]

Width 9' 9" [313cm]

Depth 1' 9" [53cm]



The Neo-Classical Seat

A hand carved natural limestone seat having panelled back with central roundel, dentil moulded arm supports and feet with inswept plinth bases.

Height 3' 4" [102 cm]

Width 5' 5½" [166.5 cm]

Depth 1' 8¼" [51.5 cm]



The Classic Curved Stone Bench

A hand carved natural limestone bench having fluted supports and shaped seat.

Height 1' 7" [48cm]

Width 4' 7" [140cm]

Depth 1' 4" [41cm]



The Classic Straight Stone Bench

A hand carved natural limestone bench having rectangular top on fluted shaped supports.

Height 1'7" [48 cm]

Width 4'7" [140 cm]

Depth 1'4" [41 cm]





The Quercus Robur Garden Dining Table

A fine English 6-year-old air-dried carved oak table, joined by the distinctive pegged mortise and tenon joints, a trademark of The Architectural Heritage Quercus Robur Range. This fine table is made to last outside and will weather in time to a silver grey.

Height 2' 4½" [72.5 cm]

Depth 3' 4" [102 cm]

Length 9' [274 cm]

Custom sizes available.



**The English Oak
Garden Dining Table with
Natural Limestone Top**

A mortise and tenoned English oak base supporting a solid natural limestone top.

Height 2' 4" [71 cm]

Length 6' 10³/₄" [210 cm]

Depth 2' 11¹/₂" [90 cm]



**The English Oak
Garden Dining Table with
Arabesque Marble Top**

A mortise and tenoned English oak base supporting a solid Italian Arabesque marble top.

Height 2' 4" [71 cm]

Length 6' 10³/₄" [210 cm]

Depth 2' 11¹/₂" [90 cm]





**SUNDIALS &
ARMILLARIES**



The Inverted Sundial Pedestal

A hand carved natural limestone sundial pedestal of tapering form, available with choice of armillary sphere.



With Zenith Armillary Sphere

Overall height
5' 10" [178 cm]

Square at base
1' 1½" [34 cm]

Sphere diameter
1' 6½" [47 cm]



With Greenwich Armillary Sphere

Overall height
6' 6" [198 cm]

Square at base
1' 1½" [34 cm]

Sphere diameter
2' 3½" [70 cm]



With Holborn Armillary Sphere

Overall height
7' 6" [229 cm]

Square at base
1' 1½" [34 cm]

Sphere diameter
3' 1" [94 cm]





The Solstice Sundial Pedestal

A hand carved natural limestone sundial pedestal of elegant baluster form. A choice of dial plate or armillary sphere is available.

With Zenith Armillary Sphere

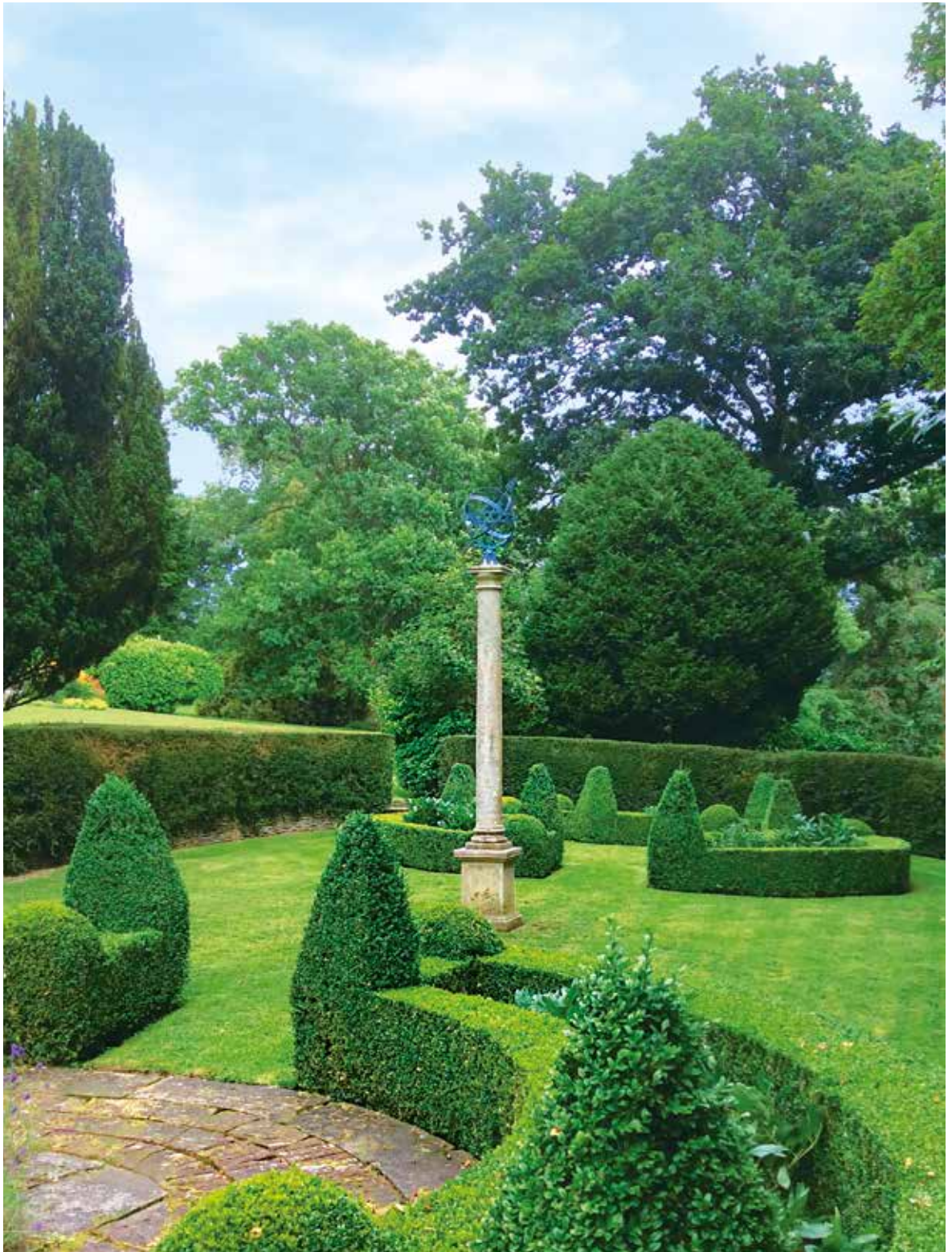
Overall height
5' 10" [178cm]

Square at base
1' 2" [36cm]

With Thomas Wright
Dial Plate

Overall height
3' 11½" [121cm]

Square at base
1' 2" [36cm]





**The Portmeirion
Column with Zenith
Armillary Sphere**

Taking inspiration from Clough Williams-Ellis' 'fantastic' creation, this item is pure folly. The column and base are hand carved in natural limestone and surmounted by a verdigris bronze armillary sphere.

Overall height
11' 8" [356 cm]

Width at base
1' 5½" [44 cm]



Image courtesy of Butter Wakefield Garden Design

The William IV Sundial Pedestal

An age patinated artificial
stone sundial pedestal,
available with choice of
armillary sphere.



With Zenith
Armillary Sphere

Overall height
5' 8½" [174 cm]

Square at base
2' 2½" [68 cm]

Sphere diameter
1' 6½" [47 cm]



With Greenwich
Armillary Sphere

Overall height
6' 6" [198 cm]

Square at base
2' 2½" [68 cm]

Sphere diameter
2' 3½" [70 cm]



With Holborn
Armillary Sphere

Overall height
7' 2" [218 cm]

Square at base
2' 2½" [68 cm]

Sphere diameter
3' 1" [94 cm]



**The Thomas Wright
Sundial Plate**

A verdigris bronze sundial plate being a faithful copy of the 18th century original by Thomas Wright Instrument Maker to George II.

Height
8" [20 cm]
Diameter
1' [31 cm]



**The Zenith
Armillary Sphere**

A verdigris bronze armillary sphere, pierced with an arrow and calibrated with the hours. Mounted upon a bell shaped support.

Overall height
2' 5" [74 cm]
Sphere diameter
1' 6½" [47 cm]
Diameter at base
6½" [17 cm]



The Greenwich Armillary Sphere

A verdigris bronze armillary sphere, pierced with an arrow and calibrated with the hours. Mounted upon a bell shaped support.

Overall height
3' 1" [94 cm]

Sphere diameter
2' 3½" [70 cm]

Diameter at base
6½" [17 cm]



The Holborn Armillary Sphere

A verdigris bronze oversized armillary sphere, pierced with a decorative arrow and calibrated with the hours. Mounted upon a bell shaped support.

Overall height
4' 1" [125 cm]

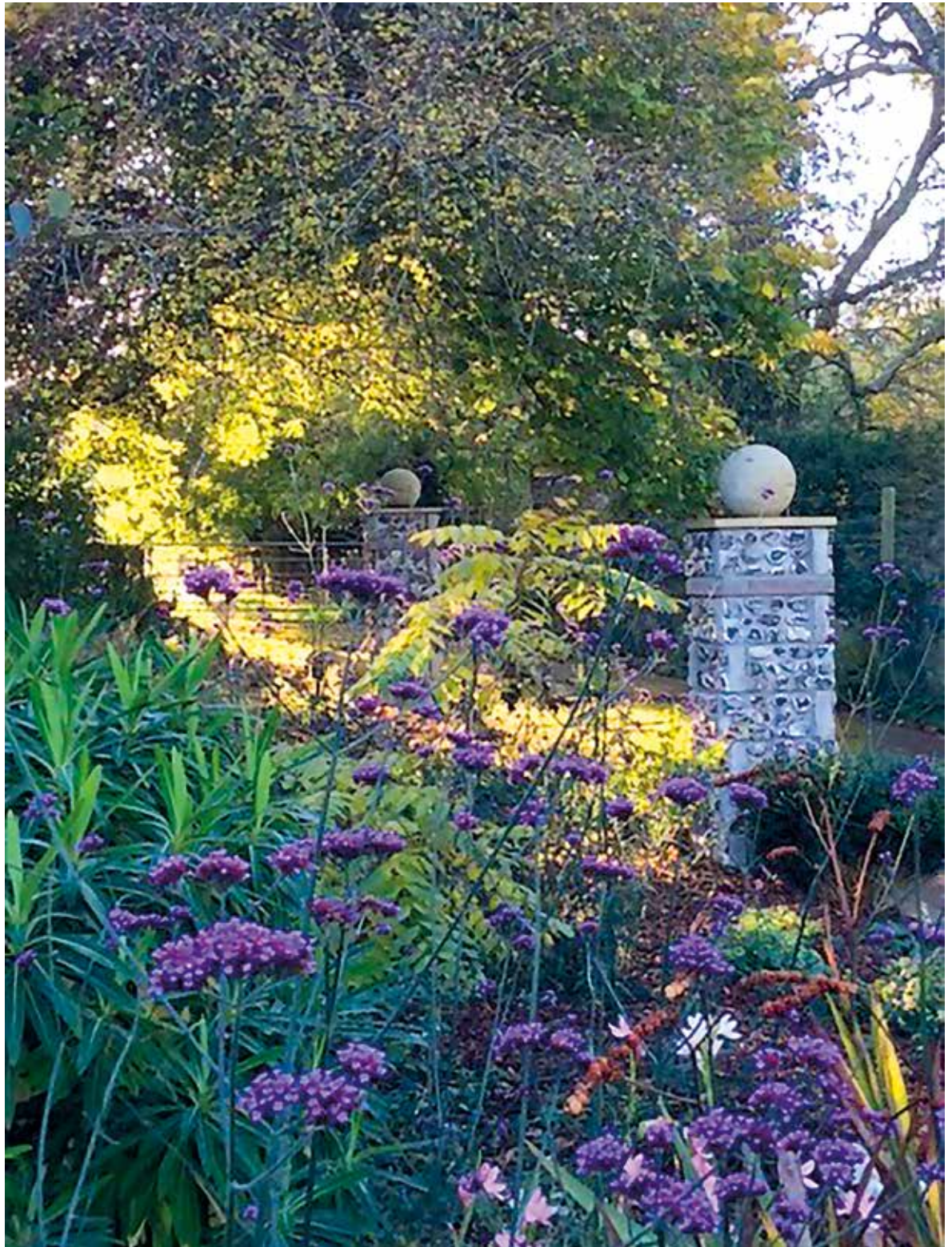
Sphere diameter
3' 1" [94 cm]

Diameter at base
6½" [17 cm]





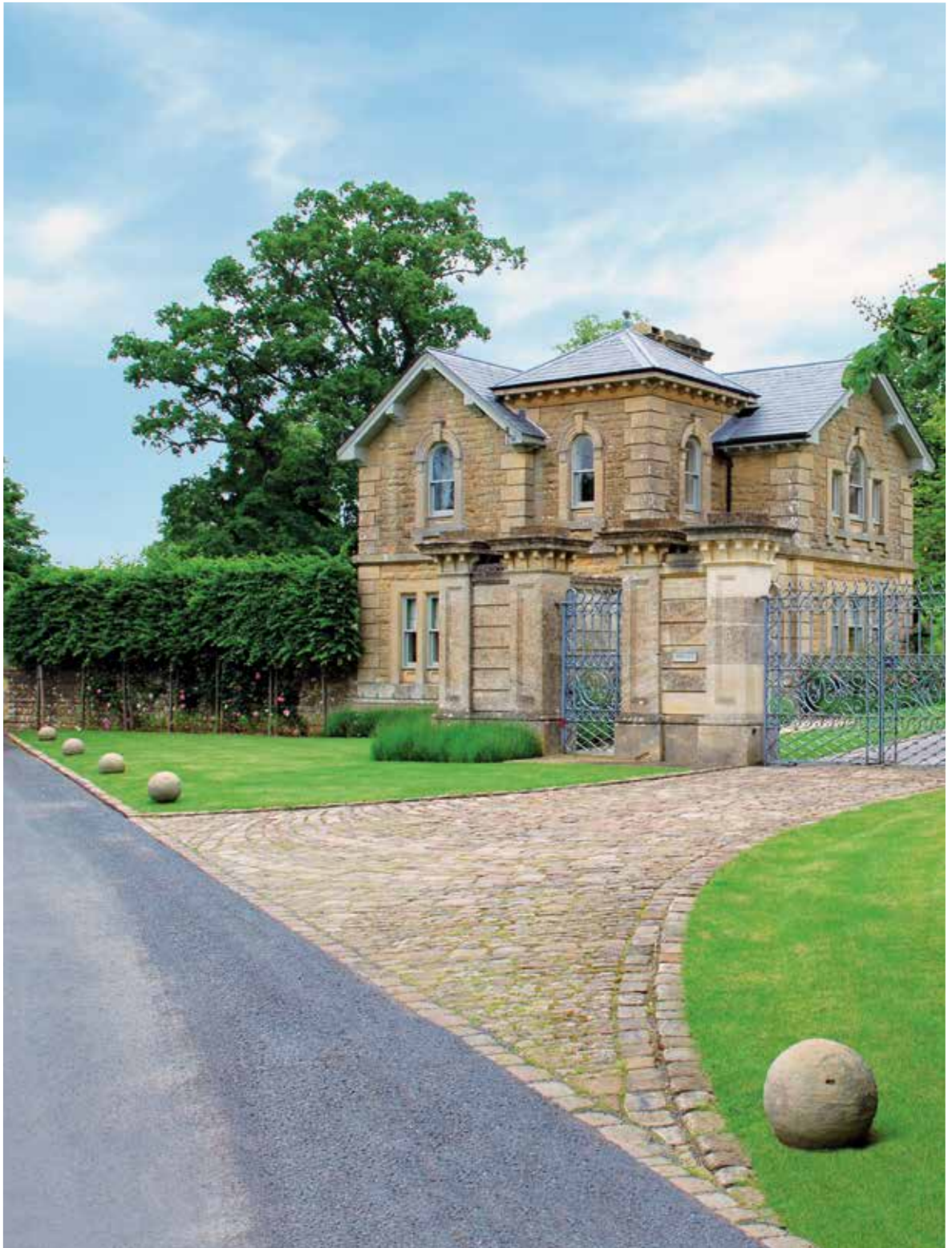
**SPHERES &
FINIALS**





The Sphere

A collection of age patinated artificial stone spheres in three sizes. Perfect for driveway edging or as finials.





The Sphere
Small

An age patinated artificial stone sphere. Perfect for driveway edging or as finials.

Diameter 1' 3" [38 cm]



The Sphere

Medium

An age patinated artificial stone sphere. Perfect for driveway edging or as finials.

Diameter 1' 6" [45.5cm]



The Sphere

Large

An age patinated artificial stone sphere. Perfect for driveway edging or as finials.

Diameter 1' 10" [56cm]



The Large Sphere Finial

An age patinated artificial
stone sphere raised upon
square waisted socle.

Height 2' 7½" [80cm]

Sphere diameter 1' 10" [56cm]

Square at base 1' 3" [38cm]



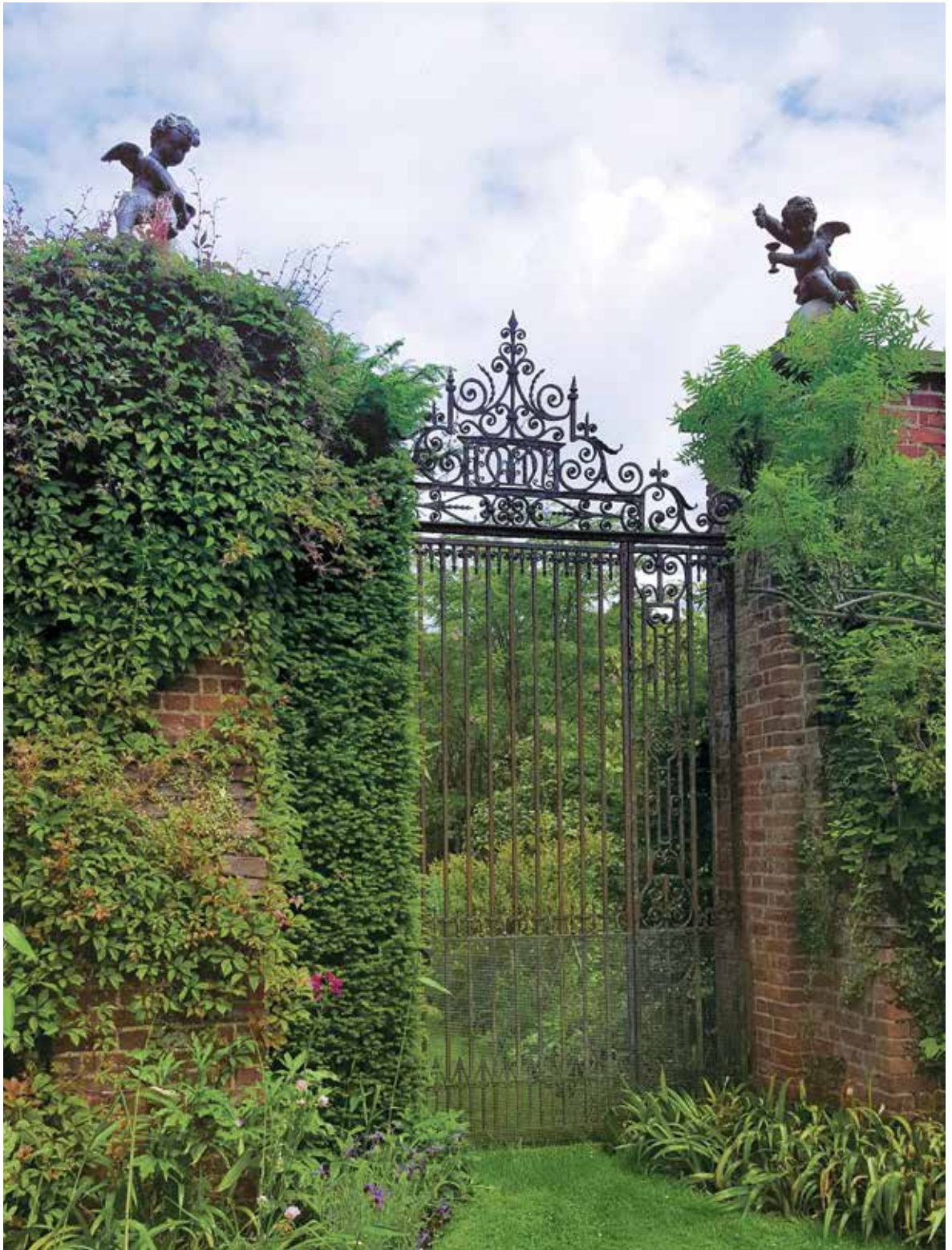
The Heritage Finial

An age patinated artificial stone lidded urn having circular socle and square base. The campana shaped body having lobed decoration to the bowl, the shaped lid surmounted by a finial.

Height 2' 9½" [84cm]

Diameter 1' 10" [56cm]

Square at base 1' [30cm]





**The Winged Lead
Putti Finials**

A pair of winged lead Putti seated upon artificial stone spheres, after the 18th century originals.

Height 2' 10" [86 cm]

Width 2' [61 cm]





**GARDEN
ORNAMENT
& GARDEN
STRUCTURES**



**'Rudolph' The
Rusty Reindeer**

Available singularly or
as a herd.

Height 2' 5½" [75 cm]

Width 2' 4" [71 cm]



The Rusty Blooms

An assemblage of rusty iron tulips with stems and leaves, creating a flexible sculptural installation.

Height 4' [122cm]

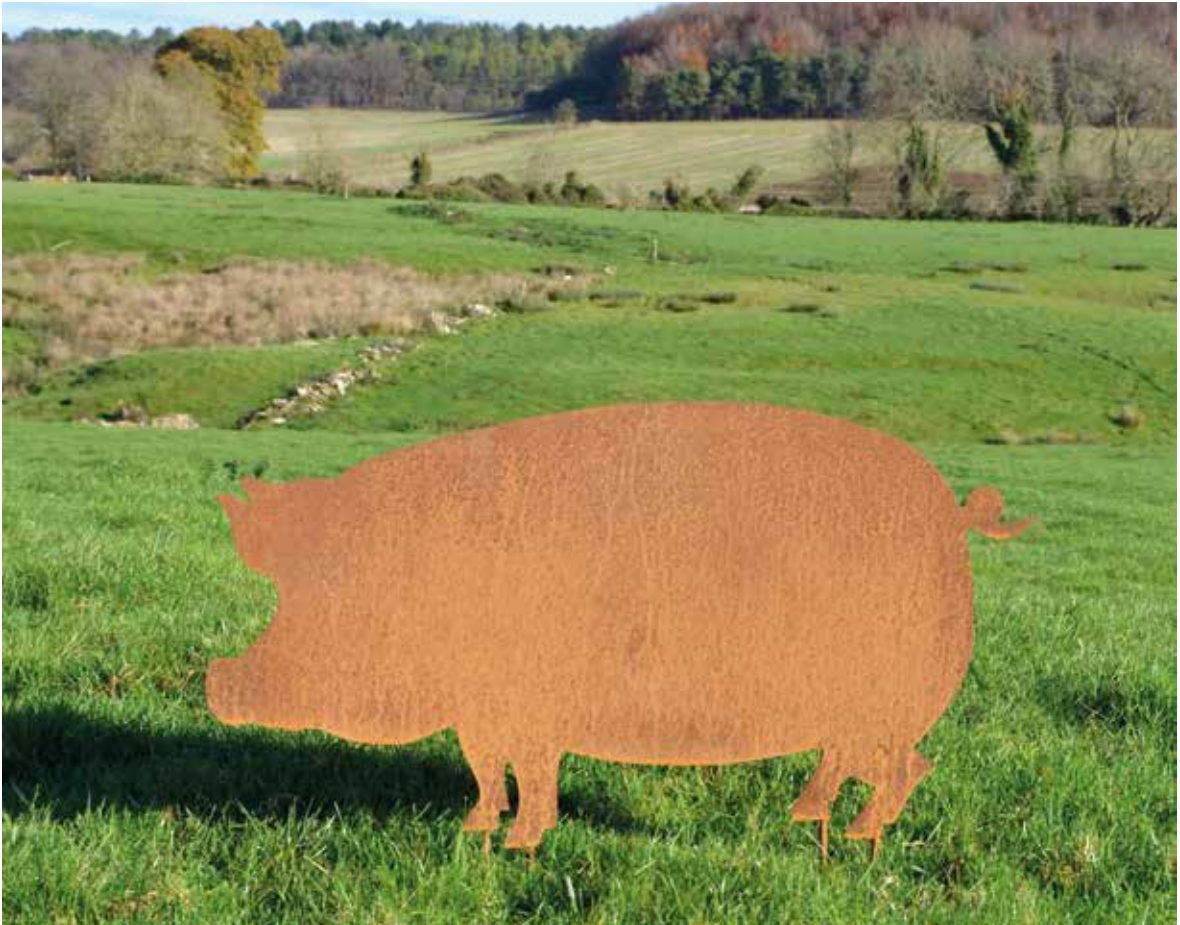


**'Dolly' The Rusty
Sheep**

Available singularly or
as a flock.

Height 1'8" [51 cm]

Width 1'9½" [55 cm]



'Colin' The Rusty Pig

Available singularly or
as a sounder.

Height 1'7" [48cm]

Width 3'1" [94cm]



The Reclining Fawn

An artificial stone statue depicting a reclining fawn with raised head, alert ears and small lead antlers.

Height 2' 6" [69 cm]

Length 3' 4" [102 cm]

Width 1' 4" [41 cm]



The Bird Bath with Equatorial Sundial

An age patinated artificial stone bird bath; the shallow circular bowl supports an equatorial dial calibrated with the hours, raised upon an ornate pedestal having acanthus decorations with a circular foot and a square base.

Height 4' 6" [137 cm]

Diameter 2' 7½" [80 cm]

Square at base 1' 6" [45 cm]



**The Tree of Life
Wall Panel**

A hand punched and finished decorative wall panel incorporating a tree with birds of paradise.

Diameter 2' 10" [86.5cm]

Please note that this item will rust in time when outside



The Obelisk

A hand carved natural limestone obelisk of tapering square form raised upon a panelled square base supported by four spheres.

Height 6' 1½" [186 cm]

Width 1' 2" [36 cm]

Depth 1' 2" [36 cm]

The Octagonal Vine Wellhead

A hand carved natural limestone wellhead with stone step, wrought iron overthrow, pulley and chain.

Height 8' 4" [254 cm]

Width 4' 8" [142 cm]





The Circular Wellhead

A hand carved natural limestone wellhead complete with stone step, wrought iron overthrow, pulley and chain.

Height 8' [244 cm]

Diameter 4' 2" [127 cm]



The Pergola

Bespoke commissions undertaken to supply hand carved natural limestone columns with English oak trellis.

Height 8' 2½" [250 cm]

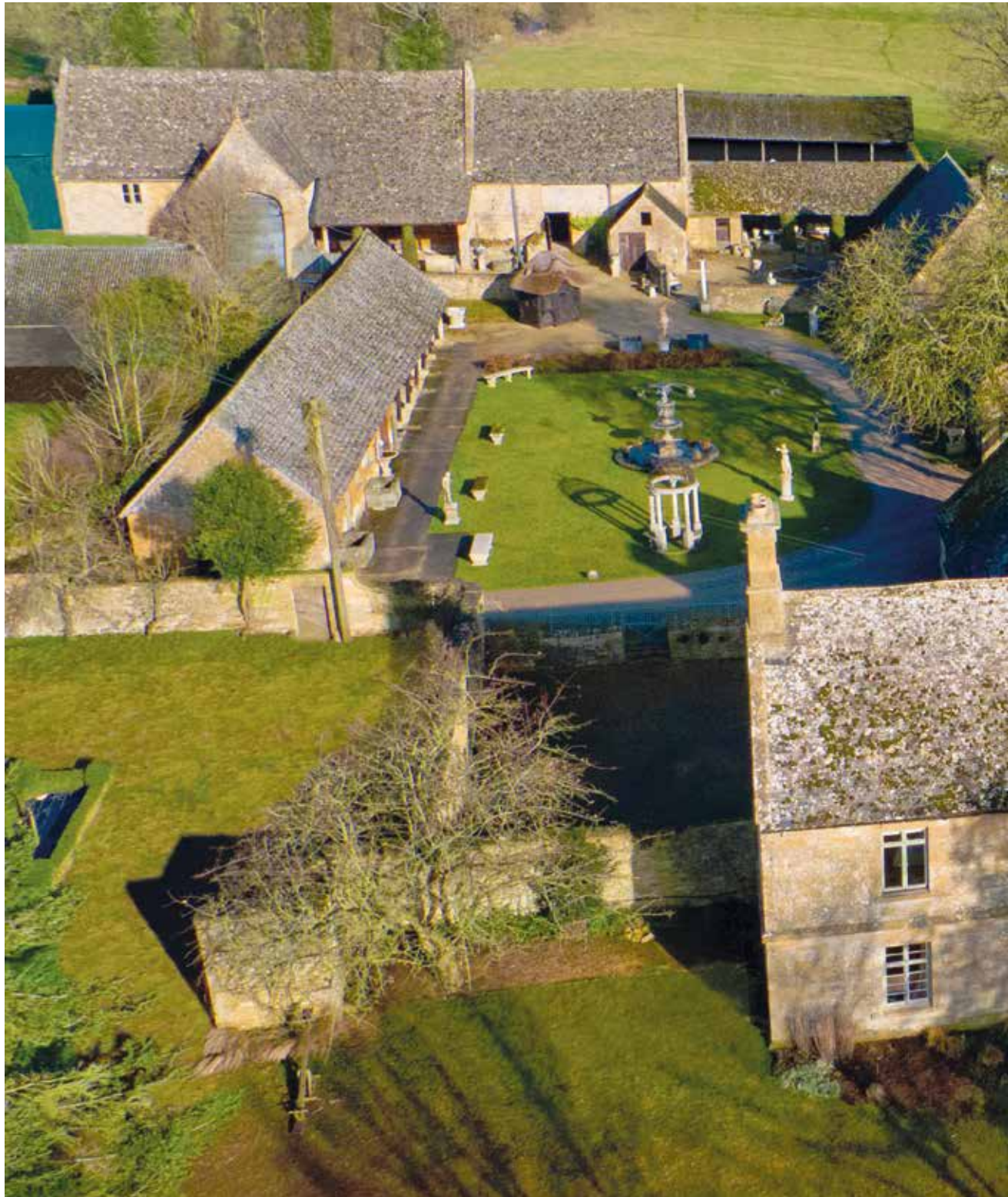
Width 10' 8" [315 cm]

Depth 10' 8" [315 cm]



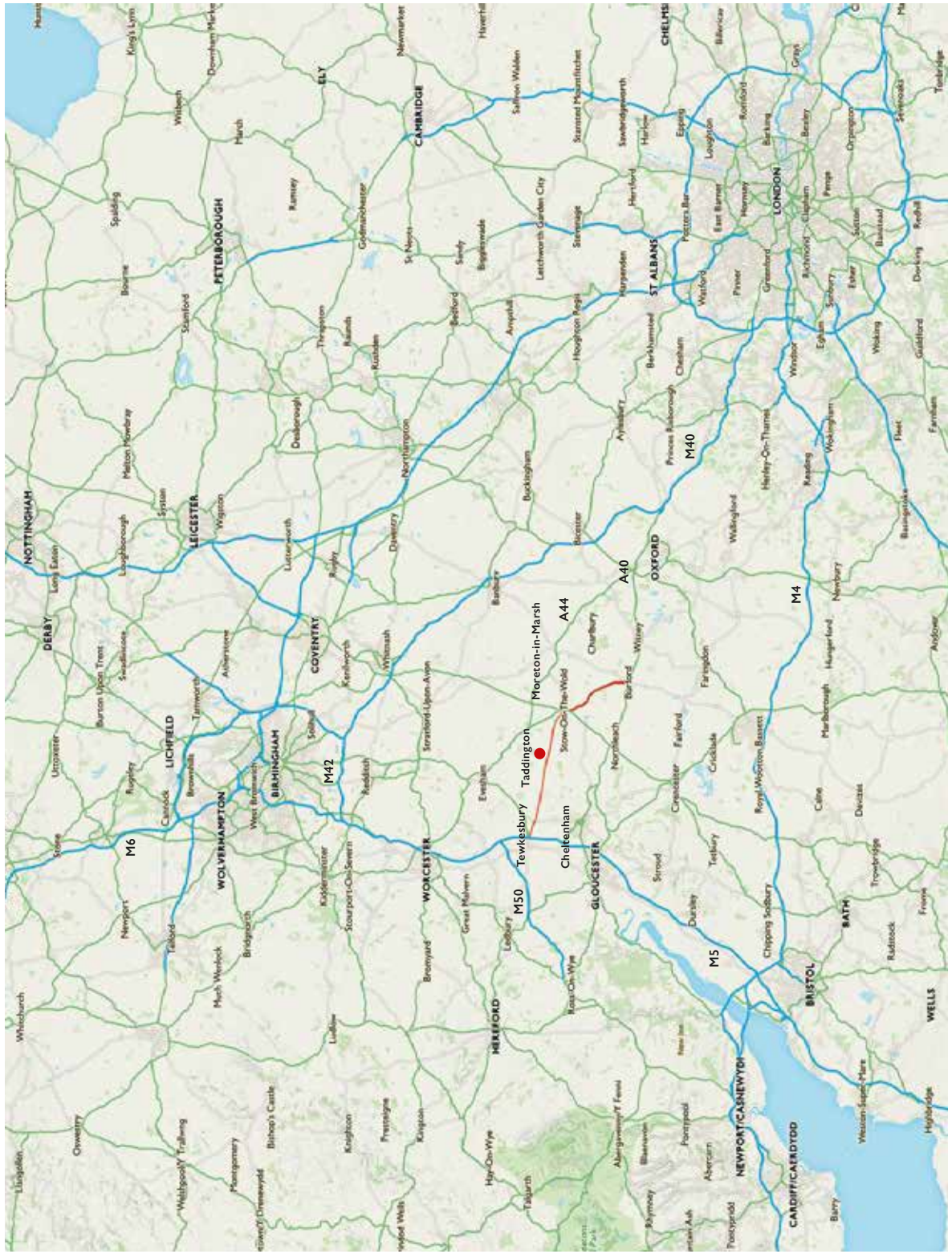
**Bespoke Commissions
Undertaken**

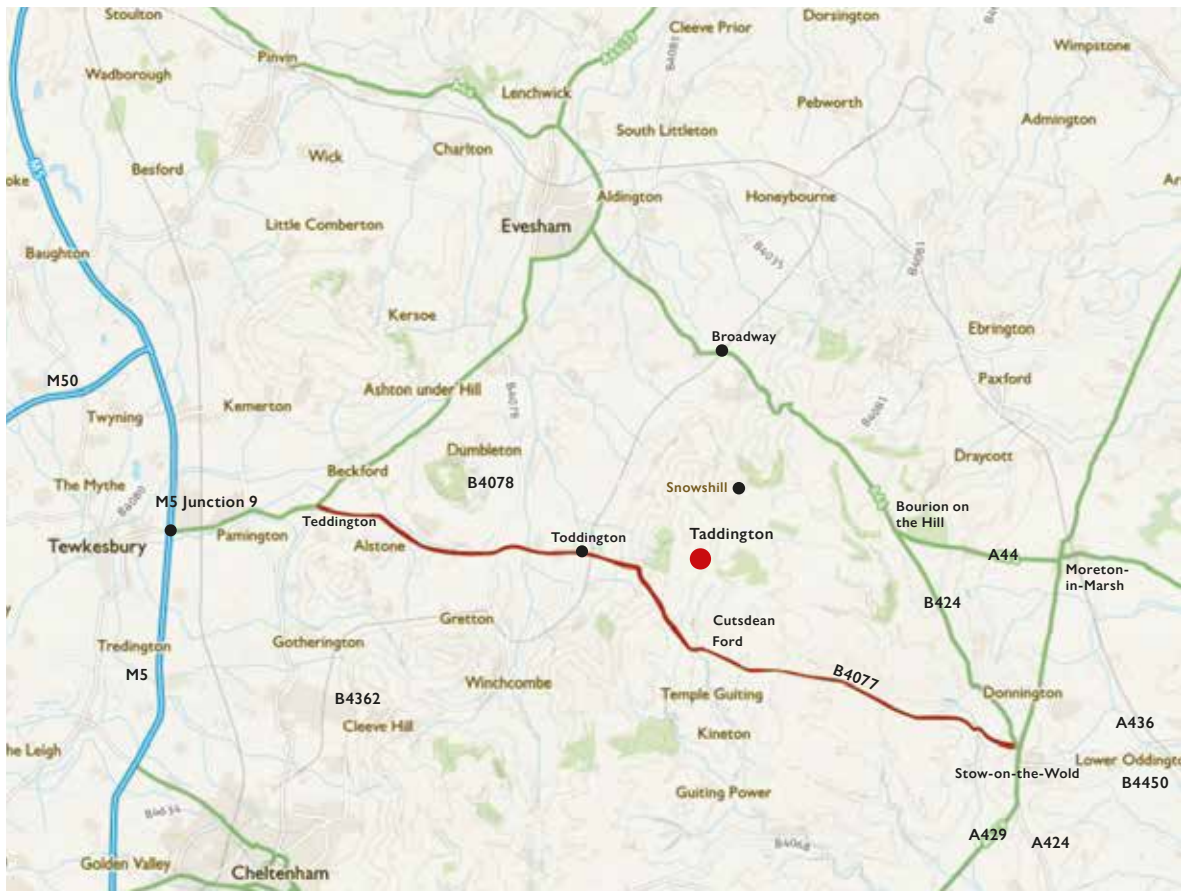
Illustrated – Royal Signals
Memorial at The National
Memorial Arboretum,
Alrewas, Staffordshire,
England.





INFORMATION





Location

Architectural Heritage is situated in the grounds of Taddington Manor, in the tiny hamlet of Taddington. The galleries and garden are open year round.

We are one hour away from Oxford, Bristol and Birmingham and two hours from London.



The British Antique Dealers' Association



LAPADA

The Association of Art and Antique Dealers



The Cotswold Art and Antique Dealers' Association

SALVO

The Architectural Dealers' Association



Anti Copying in Design

ARCHITECTURAL HERITAGE

GARDEN | SCULPTURE | INTERIOR

Taddington Manor
Taddington, Nr. Cutsdean
Gloucestershire
England GL54 5RY
office@architectural-heritage.co.uk
www.architectural-heritage.co.uk
Tel: +44 [0] 1386 584 414

9.00am – 5.00pm Monday – Friday
Saturdays by Appointment
Closed Sundays and Bank Holidays



Designed & typeset by etal design consultants. Printed
in Great Britain by The Westdale Press Limited, on
Arcoprint.

Copyright © Architectural Heritage 2018. All rights
reserved. No part of this publication may be reproduced,
transmitted, or stored in a retrieval system, in any form,
or by any means, without permission in writing from
Architectural Heritage.



ARCHITECTURAL HERITAGE

GARDEN | SCULPTURE | INTERIOR

PRICE LIST 2018

PAGE NO.	FOUNTAINS & POOL SURROUNDS	PRICE (EXCL. VAT)
4	The Two Tier Fountain	£ 6,600.00
	The Two Tier Fountain Pump Pack	£ 400.00
5	The Decorative Circular Pool Surround	£ 4,000.00
7	The Great Westwood Pool Surround	£ 6,000.00
8	The Single Tier Fountain	£ 2,800.00
	The Single Tier Fountain Pump Pack	£ 300.00
9	The Circular Pool Surround	£ 3,600.00
10	The Square Pool Surround	£ 3,600.00
11	The Large Single Tier Fountain	£ 3,800.00
	The Large Single Tier Fountain Pump Pack	£ 400.00
12	The Arched Back Wall Fountain	£ 3,600.00
13	The Onslow Park Wall Fountain with Lead Spout	£ 5,400.00
	The Onslow Park Wall Fountain Fibreglass Liner	£ 6,000.00
	The Onslow Park Wall Fountain Pump Pack	£ 300.00
14	The Neptune Wall Fountain with Lead Spout	£ 7,800.00
	The Neptune Wall Fountain Pump Pack	£ 300.00
15	The Neptune Wall Fountain	£ 7,800.00
	The Neptune Wall Fountain Pump Pack	£ 300.00
16	The River God Fountain Mask	£ 2,000.00
17	The Wall Fountain with Lion Mask	£ 2,600.00
	The Wall Fountain with Lion Mask Pump Pack	£ 300.00

PAGE NO.	PLANTERS	PRICE (EXCL. VAT)
23	The Square Copper Planter – Small	£ 900.00
25	The Square Copper Planter – Medium	£ 1,400.00
27	The Square Copper Planter – Large	£ 1,800.00
29	The Square Copper Planter – Very Large	£ 2,400.00
33	The Circular Copper Planter – Small	£ 800.00
35	The Circular Copper Planter – Medium	£ 1,300.00
37	The Circular Copper Planter – Large	£ 1,700.00
39	The Circular Copper Planter – Very Large	£ 2,200.00
43	The Rectangular Copper Planter – Small Narrow	£ 2,000.00
	The Rectangular Copper Planter – Small Wide	£ 2,200.00
45	The Rectangular Copper Planter – Medium Narrow	£ 2,500.00
	The Rectangular Copper Planter – Medium Wide	£ 2,700.00
47	The Rectangular Copper Planter – Large Narrow	£ 3,000.00
	The Rectangular Copper Planter – Large Wide	£ 3,400.00
49	The Courtyard Copper Planter – Small	£ 2,200.00
	The Courtyard Copper Planter – Medium	£ 2,800.00
	The Courtyard Copper Planter – Large	£ 3,400.00
54	The Estate Lead Planter	£ 2,600.00
55	The Estate Lead Planter – Large	£ 3,600.00
57	The Townhouse Lead Planter – Small	£ 1,800.00
58	The Townhouse Lead Planter – Medium	£ 2,400.00
59	The Townhouse Lead Planter – Large	£ 3,000.00
60	The Bromsgrove Guild Lead Planter	£ 1,800.00
61	The Cotswold Lion Lead Planter	£ 1,800.00
63	The Lattice Vine Lead Planter	£ 1,800.00

PAGE NO. SEATS, BENCHES & TABLES

PRICE (EXCL. VAT)

67	The Quercus Robur High Back Garden Seat	£ 5,600.00
68	The Quercus Robur Garden Seat	£ 4,400.00
69	The Quercus Robur Garden Bench	£ 3,600.00
70	The Curved Neo-Classical Seat	£ 5,800.00
71	The Neo-Classical Seat	£ 3,800.00
72	The Classic Curved Stone Bench	£ 800.00
73	The Classic Straight Stone Bench	£ 800.00
75	The Quercus Robur Garden Dining Table 9' [274cm] seats 10	£ 6,800.00
76	The English Oak Garden Dining Table with Natural Limestone Top	£ 3,400.00
77	The English Oak Garden Dining Table with Arabesque Marble Top	£ 3,800.00

SUNDIALS & ARMILLARIES

81	The Inverted Sundial Pedestal with Zenith Armillary Sphere	£ 1,800.00
81	The Inverted Sundial Pedestal with Greenwich Armillary Sphere	£ 2,000.00
81	The Inverted Sundial Pedestal with Holborn Armillary Sphere	£ 2,200.00
82	The Solstice Sundial Pedestal with Thomas Wright Sundial Plate	£ 1,600.00
83	The Solstice Sundial Pedestal with Zenith Armillary Sphere	£ 1,800.00
85	The Portmeirion Column with Zenith Armillary Sphere	£ 2,800.00
87	The William IV Sundial Pedestal with Zenith Armillary Sphere	£ 2,600.00
87	The William IV Sundial Pedestal with Greenwich Armillary Sphere	£ 2,800.00
87	The William IV Sundial Pedestal with Holborn Armillary Sphere	£ 3,000.00
88	The Thomas Wright Sundial Plate	£ 700.00
88	The Zenith Armillary Sphere	£ 900.00
89	The Greenwich Armillary Sphere	£ 1,100.00
89	The Holborn Armillary Sphere	£ 1,300.00

PAGE NO.	SPHERES & FINIALS	PRICE (EXCL. VAT)
95	The Sphere – Small	£ 350.00
96	The Sphere – Medium	£ 550.00
97	The Sphere – Large	£ 750.00
98	The Large Sphere Finial	£ 1,200.00
99	The Heritage Finial	£ 1,200.00
101	The Winged Lead Putti Finials	£ 3,800.00

GARDEN ORNAMENT & GARDEN STRUCTURES

104	'Rudolph' The Rusty Reindeer – each	£ 200.00
105	The Rusty Blooms – each	£ 40.00
106	'Dolly' The Rusty Sheep – each	£ 120.00
107	'Colin' The Rusty Pig – each	£ 250.00
108	The Reclining Fawn	£ 1,600.00
109	The Bird Bath with Equatorial Sundial	£ 2,600.00
110	The Tree of Life Wall Panel	£ 300.00
111	The Obelisk	£ 1,800.00
112	The Octagonal Vine Wellhead	£ 4,600.00
113	The Circular Wellhead	£ 3,600.00
114	The Pergola	£ 7,600.00

ARCHITECTURAL HERITAGE

GARDEN | SCULPTURE | INTERIOR

Taddington Manor, Taddington, Nr.Cutsdean, Gloucestershire, England GL54 5RY

office@architectural-heritage.co.uk

www.architectural-heritage.co.uk

+44 [0] 1386 584 414