

# ARCHITECTURAL HERITAGE

GARDEN | SCULPTURE | INTERIOR



# ARCHITECTURAL HERITAGE

GARDEN | SCULPTURE | INTERIOR

Welcome to our 2020 Garden Catalogue and thank you for your kind interest in all that we do here at Architectural Heritage.

The company is now in its 45th year of trading; evolving from our roots in the reclamation of panelled rooms, bar interiors and chemist shops, a small seed in the form of antique garden ornament grew and this has become a pillar of our business today. To complement this inventory of the finest examples of period garden ornament, our quest to reproduce faithful copies of the antiques began. This catalogue represents the culmination of many years cultivating and refining our reproduction garden ornament range and it is with great pleasure that I here present to you our latest collection.

Within these pages we have again looked to innovate and expand our range to meet our valued clients' requirements. You will see tradition updated, with our classic copper planters now available in several new designs, including rolled edge and watertight options; shown by example and drawings within this catalogue.

We are proud to continue our association with the National Trust with The Sissinghurst Castle Garden Copper Planter, and to have our garden ornament, fountains and planters chosen by discerning private clients and award winning garden designers alike.

I wish to thank you again for your interest and I very much look forward to being of assistance.

With best regards  
Alex Puddy  
*Owner*



Photograph by Eleanor Walpole/Garden Design by Birtcher Wakefield





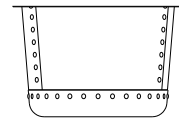
**COPPER & LEAD  
PLANTERS**





## The Circular Copper Planters

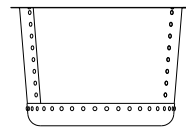
Hand crafted from heavy gauge brass, riveted together and then verdigris patinated to imitate the Victorian antique originals.



### Small

Height 35 cm [1' 1 $\frac{3}{4}$ "

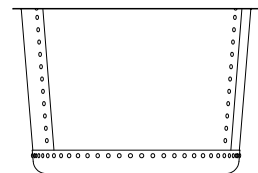
Diameter 54 cm [1' 9 $\frac{1}{4}$ "



### Medium

Height 45 cm [1' 5 $\frac{3}{4}$ "

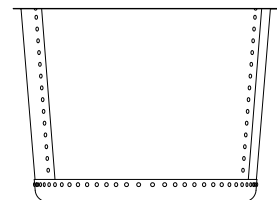
Diameter 68.5 cm [2' 3"



### Large

Height 60 cm [1' 11 $\frac{1}{2}$ "

Diameter 89.4 cm [2' 11 $\frac{1}{4}$ "



### Very Large

Height 73.5 cm [2' 5"

Diameter 100.8 cm [3' 3 $\frac{3}{4}$ "



**The Circular  
Copper Planter  
Small**

Hand crafted from heavy gauge brass, riveted together and then verdigris patinated to imitate the Victorian antique originals.

Height 35 cm [1' 1<sup>3</sup>/<sub>4</sub>"]

Diameter 54 cm [1' 9<sup>1</sup>/<sub>4</sub>"]





**The Circular  
Copper Planter  
Medium**

Hand crafted from heavy gauge brass, riveted together and then verdigris patinated to imitate the Victorian antique originals.

Height 45 cm [1' 5¾"]

Diameter 68.5 cm [2' 3"]



**The Circular  
Copper Planter  
Large**

Hand crafted from heavy gauge brass, riveted together and then verdigris patinated to imitate the Victorian antique originals.

Height 60cm [1' 11½"]

Diameter 89.4cm [2' 11¼"]



**The Circular  
Copper Planter  
Very Large**

Hand crafted from heavy gauge brass, riveted together and then verdigris patinated to imitate the Victorian antique originals.

Height 73.5 cm [2' 5"]

Diameter 100.8 cm [3' 3¾"]

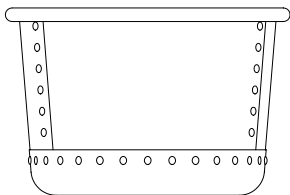




**The Circular  
Copper Planters  
Rolled Edge**

Hand crafted from heavy gauge brass with a rolled-edge top, riveted together and verdigris patinated.

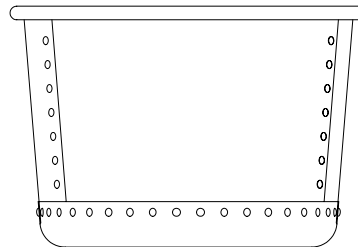
*Featured: The Circular  
Copper Planter – Large –  
Rolled Edge*



**Small**

Height 35 cm [1' 1 $\frac{3}{4}$ "

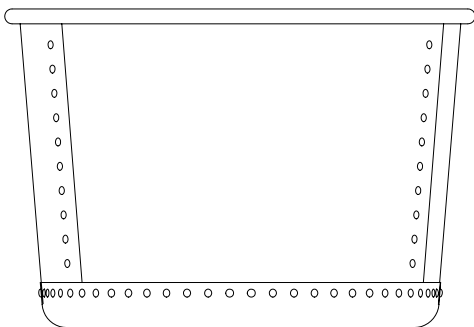
Width 53.2 cm [1' 9"



**Medium**

Height 45 cm [1' 5 $\frac{3}{4}$ "

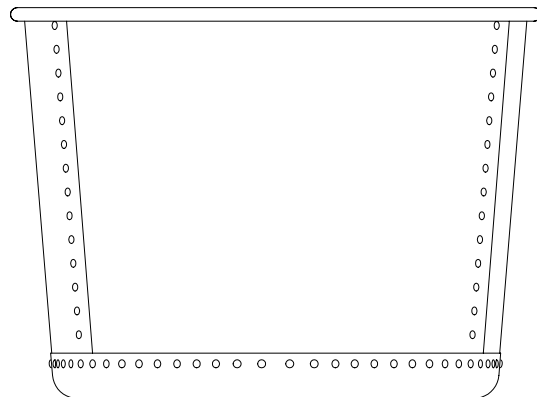
Width 66.7 cm [2' 2 $\frac{1}{4}$ "



**Large**

Height 60 cm [1' 11 $\frac{1}{2}$ "

Width 88.6 cm [2' 11"



**Very Large**

Height 73.5 cm [2' 5"

Width 99.7 cm [3' 3 $\frac{1}{4}$ "





# National Trust

## The Sissinghurst Castle Garden Copper Planter

Sissinghurst Estate was a ruin when purchased by Vita Sackville-West and Harold Nicolson in 1930. After three years of clearing the long-overgrown land, the creation of 'a garden where none was' became a joint labour of love that would last for over three decades.

In general, Harold was responsible for the design and layout along strong architectural lines, while Vita (so named to differentiate her from her mother, also a Victoria) was the head of her team of gardeners, innovating with informal planting schemes to give visitors a



© The Cecil Beaton Studio Archive at Sotheby's



© National Trust Image/Andrew Butler



## ARCHITECTURAL HERITAGE

GARDEN | SCULPTURE | INTERIOR



© National Trust Image/Arnhel de Serra

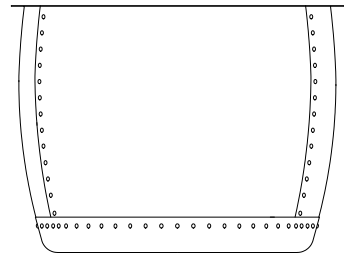
horticultural experience of discovery and exploration.

First opened to the public in 1937, the gardens 'drew on the sense of an abandoned past' with the old Tower at its ancient heart. Although the White Garden is the most well-known of Sissinghurst's ten garden rooms, the Cottage Garden by contrast has a sunset planting scheme of hot colours, warm reds and golds, which shout in a riot of colour in late summer and autumn. Here, in the centre of the garden nestled between four tall Irish yews, is an original Copper Copper. Probably found locally (maybe even in the Tower) this now planter is a remnant of some long-outdated Victorian water heating system, reused by Vita as an axis feature.

Invited by the National Trust, who now look after Sissinghurst Castle Garden for the nation, Architectural Heritage is proud to have faithfully copied the original planter down to the last rivet.

Fashioned from the same grade of thick sheet brass, we have fabricated the distinctive bulbous shape and verdigris patinated *The Sissinghurst Castle Garden Copper Planter* to last another lifetime.

Poignantly, Vita wrote in 1959 'his scoop... it is still there – a little hollow in one of the stones near the central copper basin', Harold used it to measure how much rain had fallen in the night. Three years later Vita passed, however, the garden that 'tethered her floating heart' remains to this day for us all to enjoy.



Height 70 cm [2' 3 1/2"]

Diameter 94 cm [3' 1"]



© National Trust Image/David Seilman





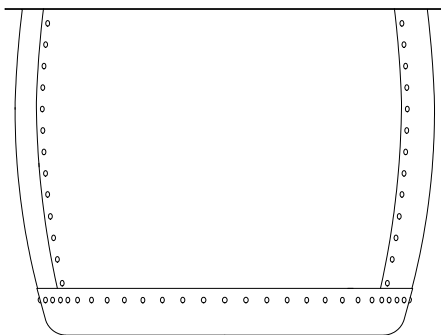
National  
Trust

**The Sissinghurst  
Castle Garden  
Copper Planters**

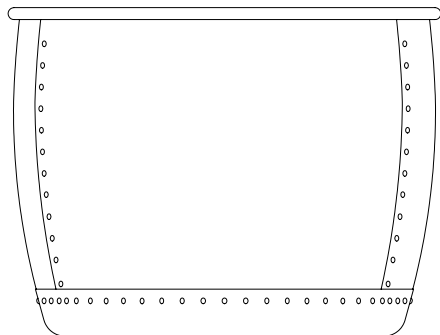
The Sissinghurst Castle Garden Copper Planter is now available with either a flat top or rolled edge. Hand crafted from heavy gauge brass with the distinctive bulbous shape, this planter is riveted together and then verdigris patinated to replicate the original.



© National Trust Images/Andrew Butler



Height 70 cm [2' 3½"]  
Diameter 94 cm [3' 1"]



Height 70 cm [2' 3½"]  
Diameter 92 cm [3' ¼"]



© National Trust Images/Andrew Butler

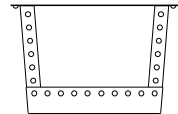






## The Square Copper Planters

Hand crafted from heavy gauge brass, riveted together and then verdigris patinated to echo the Victorian antique originals.

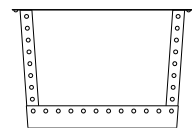


### Small

Height 35 cm [1' 1 $\frac{3}{4}$ "

Width 54 cm [1' 9 $\frac{1}{4}$ "

Depth 54 cm [1' 9 $\frac{1}{4}$ "

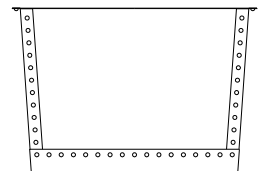


### Medium

Height 45 cm [1' 5 $\frac{3}{4}$ "

Width 68.5 cm [2' 3"

Depth 68.5 cm [2' 3"

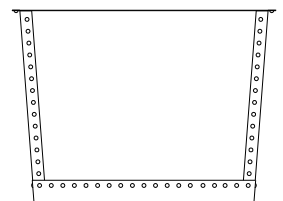


### Large

Height 60 cm [1' 11 $\frac{1}{2}$ "

Width 89.4 cm [2' 11 $\frac{1}{4}$ "

Depth 89.4 cm [2' 11 $\frac{1}{4}$ "



### Very Large

Height 73.5 cm [2' 5"

Width 100.8 cm [3' 3 $\frac{1}{2}$ "

Depth 100.8 cm [3' 3 $\frac{1}{2}$ "



Photograph by Eleanor Walpole/Garden Design by Butler-Workefield



**The Square  
Copper Planter  
Small**

Hand crafted from heavy gauge brass, riveted together and then verdigris patinated to echo the Victorian antique originals.

Height 35 cm [1' 1 $\frac{1}{4}$ "]

Width 54 cm [1' 9 $\frac{1}{4}$ "]

Depth 54 cm [1' 9 $\frac{1}{4}$ "]



Photograph by Eleanor Walpole/Garden Design by Butler-Workefield





**The Square  
Copper Planter  
Medium**

Hand crafted from heavy gauge brass, riveted together and then verdigris patinated to echo the Victorian antique originals.

Height 45cm [1' 5<sup>3</sup>/<sub>4</sub>"

Width 68.5cm [2' 3"

Depth 68.5cm [2' 3"



Photograph by Eleanor Walpole/Garden Design by Butler-Workefield



**The Square  
Copper Planter  
Large**

Hand crafted from heavy gauge brass, riveted together and then verdigris patinated to echo the Victorian antique originals.

Height 60cm [1' 11½"]  
Width 89.4cm [2' 11¼"]  
Depth 89.4cm [2' 11¼"]



Photograph by Eleanor Walpole/Garden Design by Butler-Workefield



**The Square  
Copper Planter  
Very Large**

Hand crafted from heavy gauge brass, riveted together and then verdigris patinated to echo the Victorian antique originals.

Height 73.5cm [2' 5"]

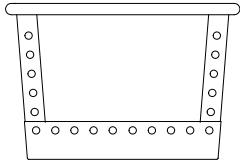
Width 100.8cm [3' 3¾"]

Depth 100.8cm [3' 3¾"]

**The Square  
Copper Planters  
Rolled Edge**

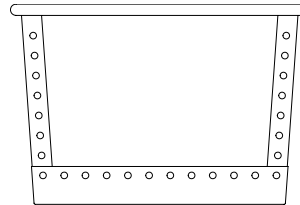
Hand crafted from heavy gauge brass with a rolled-edge top, riveted together and verdigris patinated.

*Featured: The Square Copper Planter – Large – Rolled Edge*



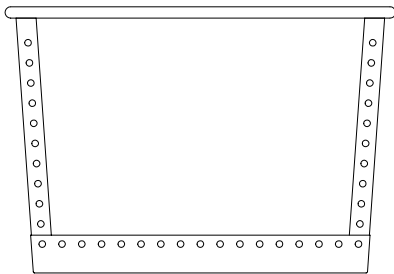
**Small**

Height 35 cm [1' 1 $\frac{3}{4}$ "]  
Width 52.6 cm [1' 8 $\frac{3}{4}$ "]  
Depth 52.6 cm [1' 8 $\frac{3}{4}$ "]



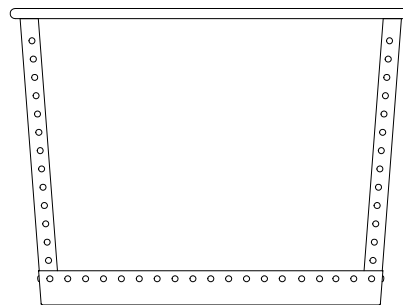
**Medium**

Height 45 cm [1' 5 $\frac{3}{4}$ "]  
Width 67.1 cm [2' 2 $\frac{1}{2}$ "]  
Depth 67.1 cm [2' 2 $\frac{1}{2}$ "]



**Large**

Height 60 cm [1' 11 $\frac{1}{2}$ "]  
Width 88.1 cm [2' 10 $\frac{3}{4}$ "]  
Depth 88.1 cm [2' 10 $\frac{3}{4}$ "]



**Very Large**

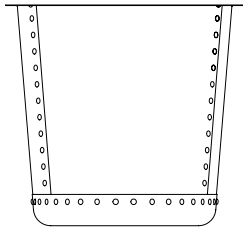
Height 73.5 cm [2' 5"]  
Width 99.4 cm [3' 3 $\frac{1}{4}$ "]  
Depth 99.4 cm [3' 3 $\frac{1}{4}$ "]



## The Circular Terrace Copper Planters

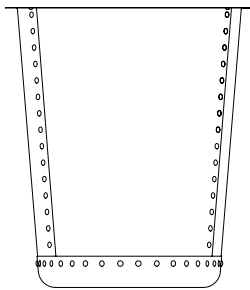
Hand crafted from heavy gauge brass with flat top or rolled-edge option, riveted together and verdigris patinated.

Featured: *The Circular Terrace Copper Planter – Medium*



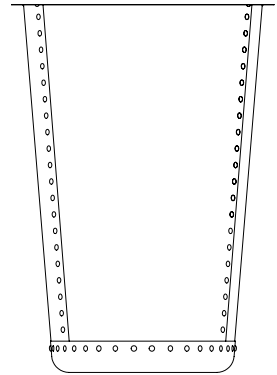
### Small

Height 60 cm [1' 11½"]  
Diameter 64.7 cm [2' 1½"]



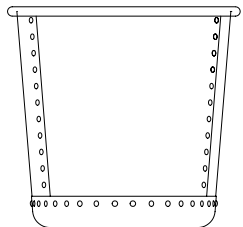
### Medium

Height 76.2 cm [2' 6"]  
Diameter 67.4 cm [2' 2¾"]



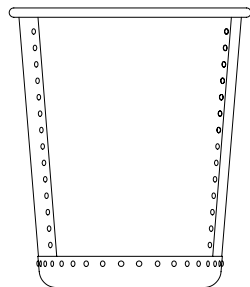
### Large

Height 100 cm [3' 3½"]  
Diameter 71.3 cm [2' 4¼"]



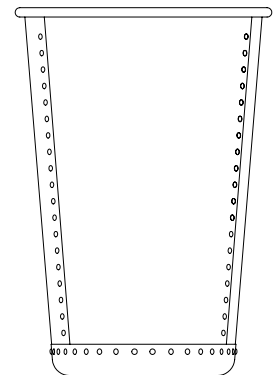
### Small – Rolled Edge

Height 60 cm [1' 11½"]  
Diameter 63.2 cm [2' 1"]



### Medium – Rolled Edge

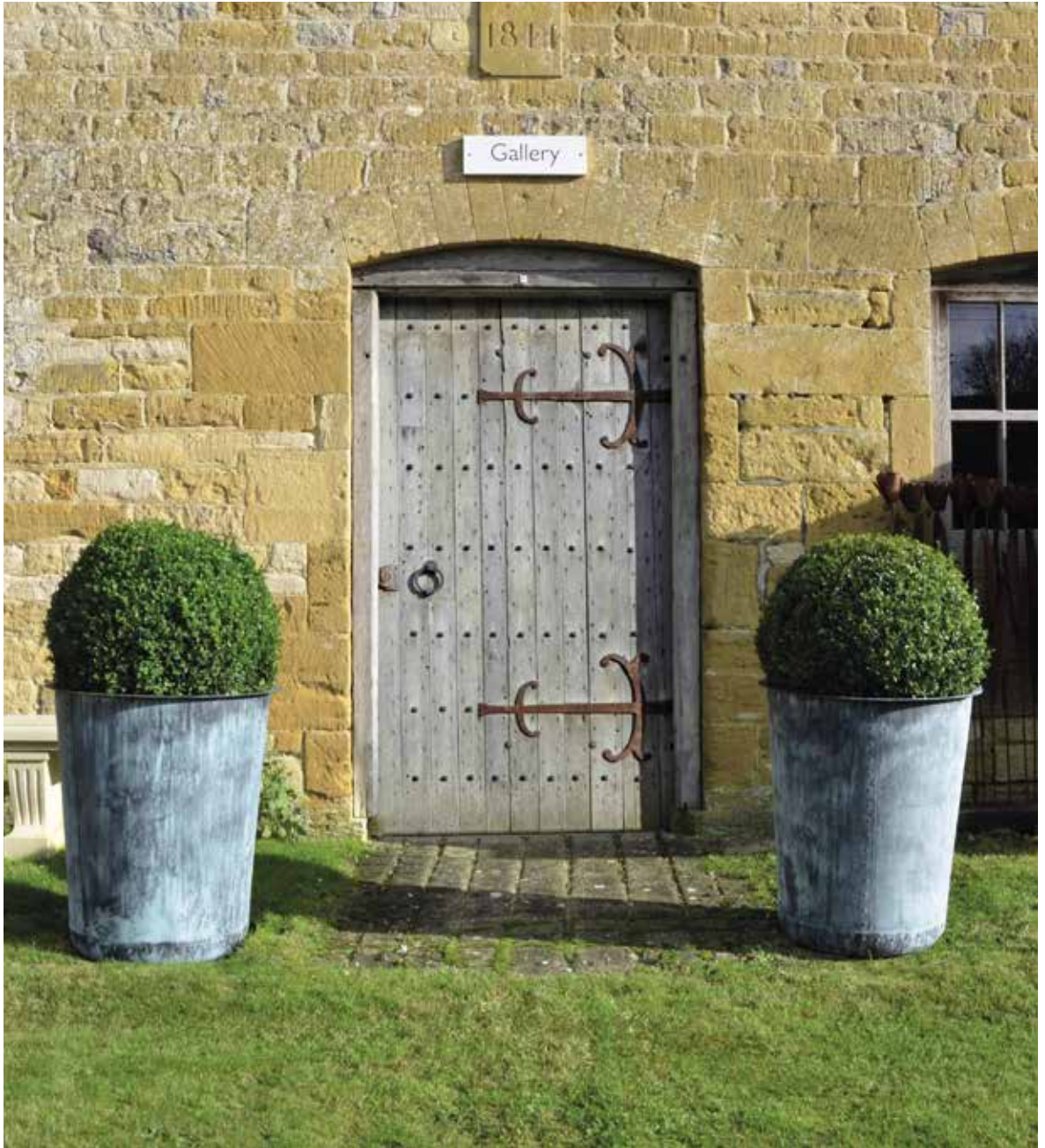
Height 76.2 cm [2' 6"]  
Diameter 65.9 cm [2' 2"]



### Large – Rolled Edge

Height 100 cm [3' 2½"]  
Diameter 69.8 cm [2' 3½"]

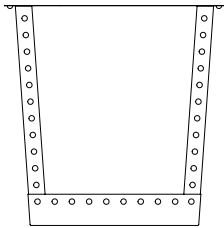




## The Square Terrace Copper Planters

Hand crafted from heavy gauge brass with flat top or rolled-edge option, riveted together and verdigris patinated.

Featured: *The Square Terrace Copper Planter – Small – Rolled Edge*

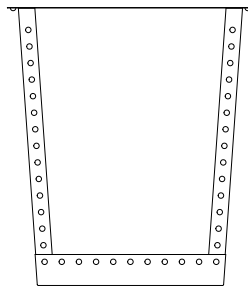


### Small

Height 60 cm [1' 11½"]

Width 60 cm [1' 11½"]

Depth 60 cm [1' 11½"]

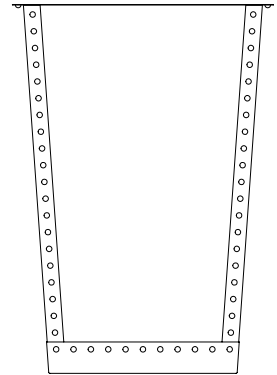


### Medium

Height 76.2 cm [2' 6"]

Width 67.4 cm [2' 2½"]

Depth 67.4 cm [2' 2½"]

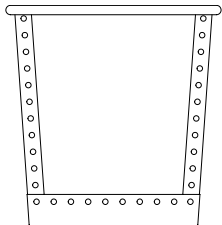


### Large

Height 100 cm [3' 3½"]

Width 70.8 cm [2' 4"]

Depth 70.8 cm [2' 4"]

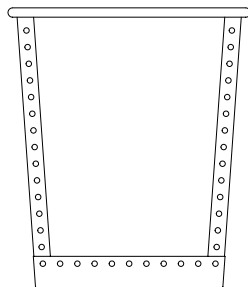


### Small – Rolled Edge

Height 60 cm [1' 11½"]

Width 58.7 cm [1' 11¼"]

Depth 58.7 cm [1' 11¼"]

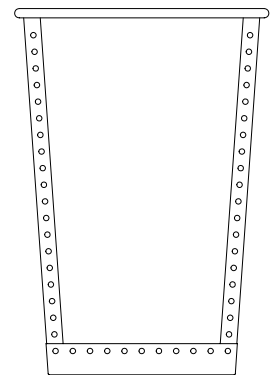


### Medium – Rolled Edge

Height 76.2 cm [2' 6"]

Width 66.1 cm [2' 2"]

Depth 66.1 cm [2' 2"]

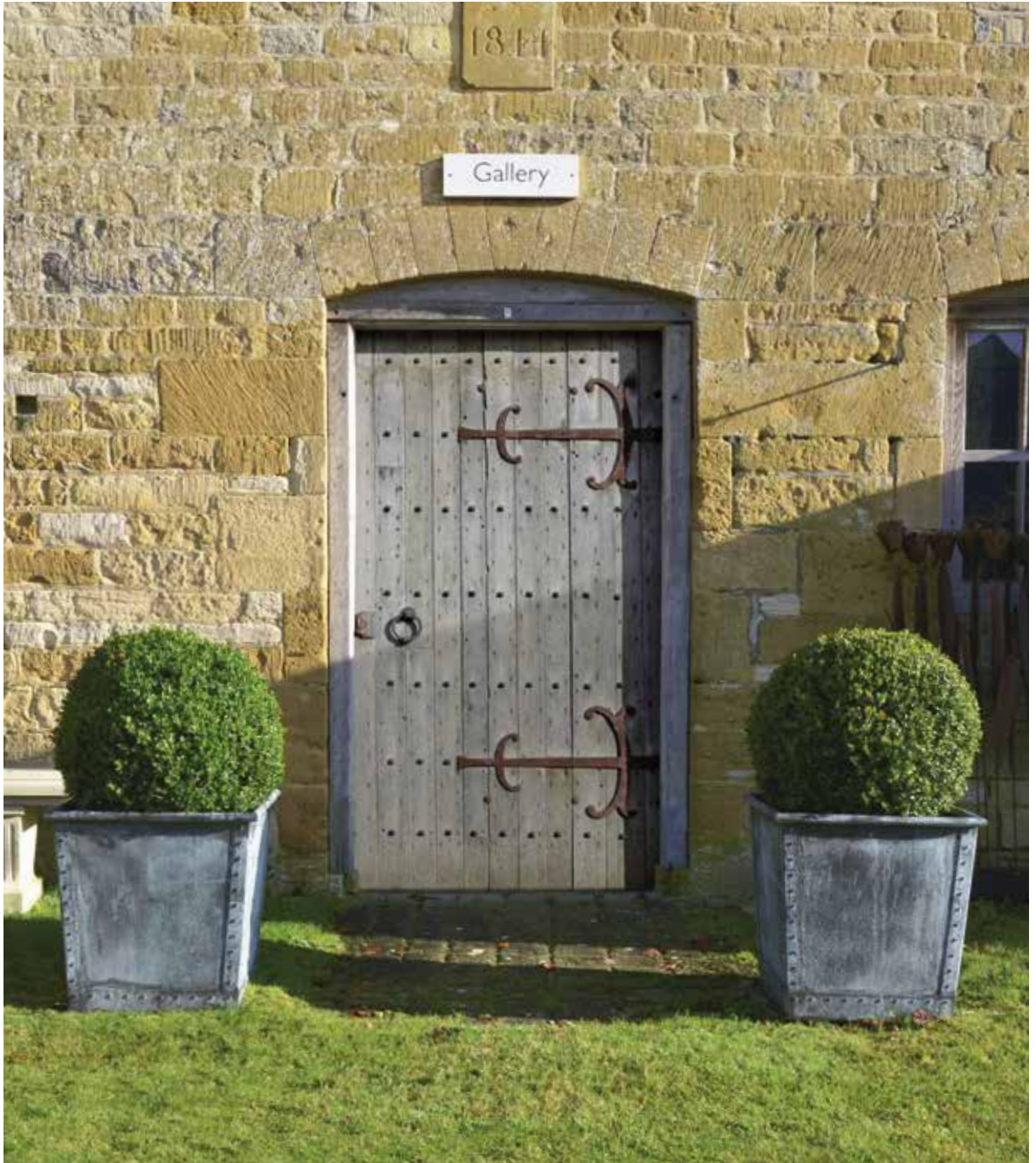


### Large – Rolled Edge

Height 100 cm [3' 3½"]

Width 69.4 cm [2' 3½"]

Depth 69.4 cm [2' 3½"]





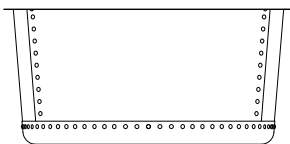
Photograph by Eleanor Walpole/Garden Design by Butler-Workefield



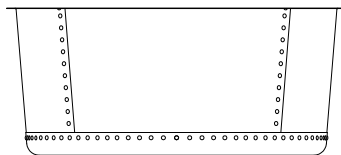
Photograph by Eleanor Worpole/Garden Design by Bütner Wakefield

### The Courtyard Copper Planters

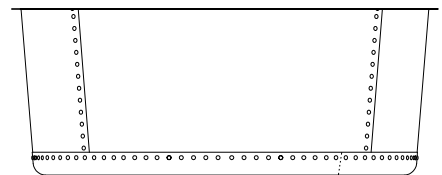
Hand crafted from heavy gauge brass, riveted together and then verdigris patinated to imitate the Victorian antique originals.



**Small**  
Height 50 cm [1' 7¾"]  
Diameter 107 cm [3' 6¼"]



**Medium**  
Height 55 cm [1' 9¾"]  
Diameter 127 cm [4' 2"]



**Large**  
Height 62.2 cm [2' ½"]  
Diameter 159.5 cm [5' 2¾"]

**The Courtyard  
Copper Planter  
Small**

Hand crafted from heavy gauge brass, riveted together and then verdigris patinated to imitate the Victorian antique originals.

Height 50cm [1' 7¾"]

Diameter 107cm [3' 6¼"]



Image courtesy of Clare Bennett-Naghshineh



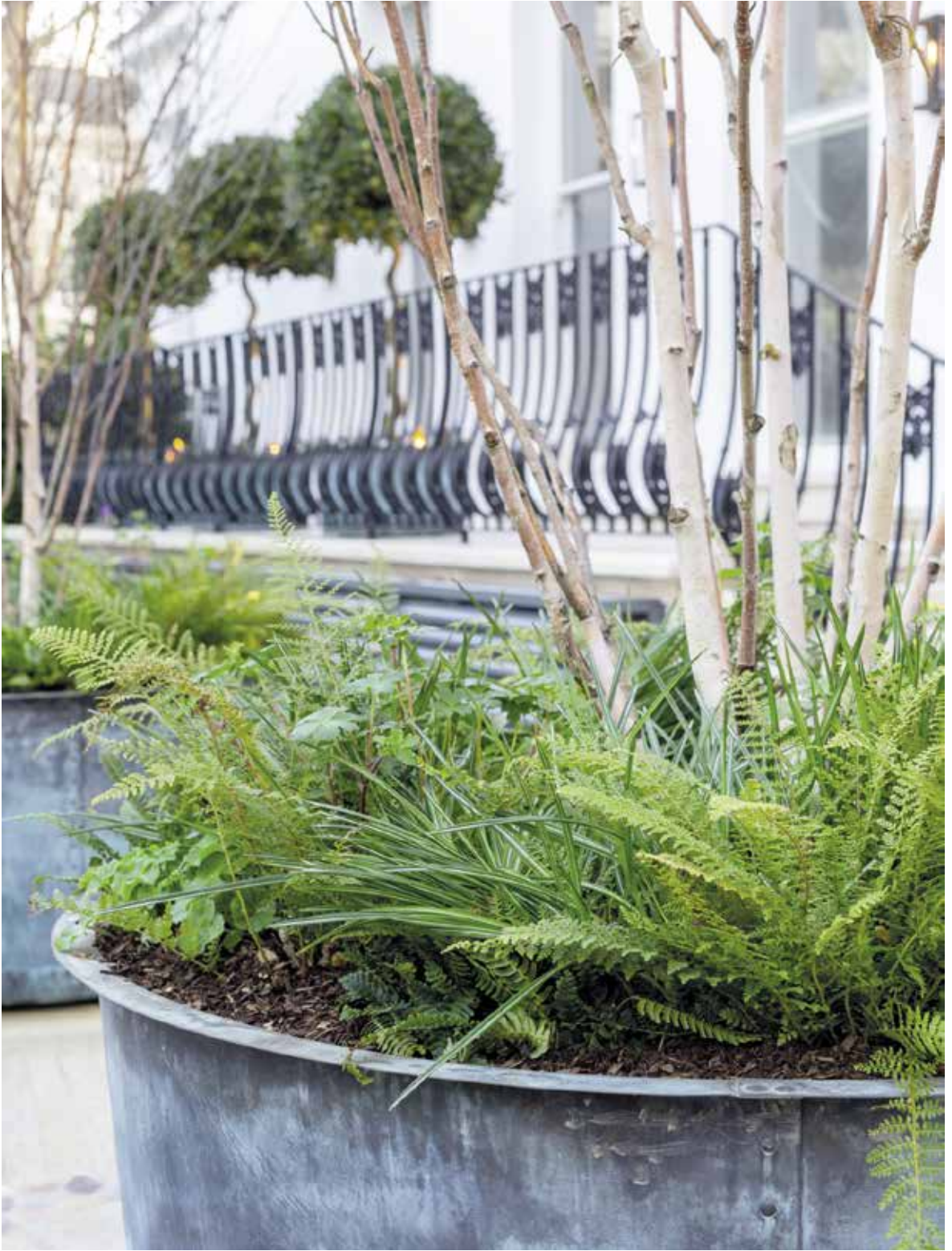
**The Courtyard  
Copper Planter  
Medium**

Hand crafted from heavy gauge brass, riveted together and then verdigris patinated to imitate the Victorian antique originals.

Height 55 cm [1' 9<sup>3</sup>/<sub>4</sub>"]

Diameter 127 cm [4' 2"]

Image courtesy of Sarah Gore



Photograph by Eleanor Wapole/Garden Design by Butler Wokosfeld





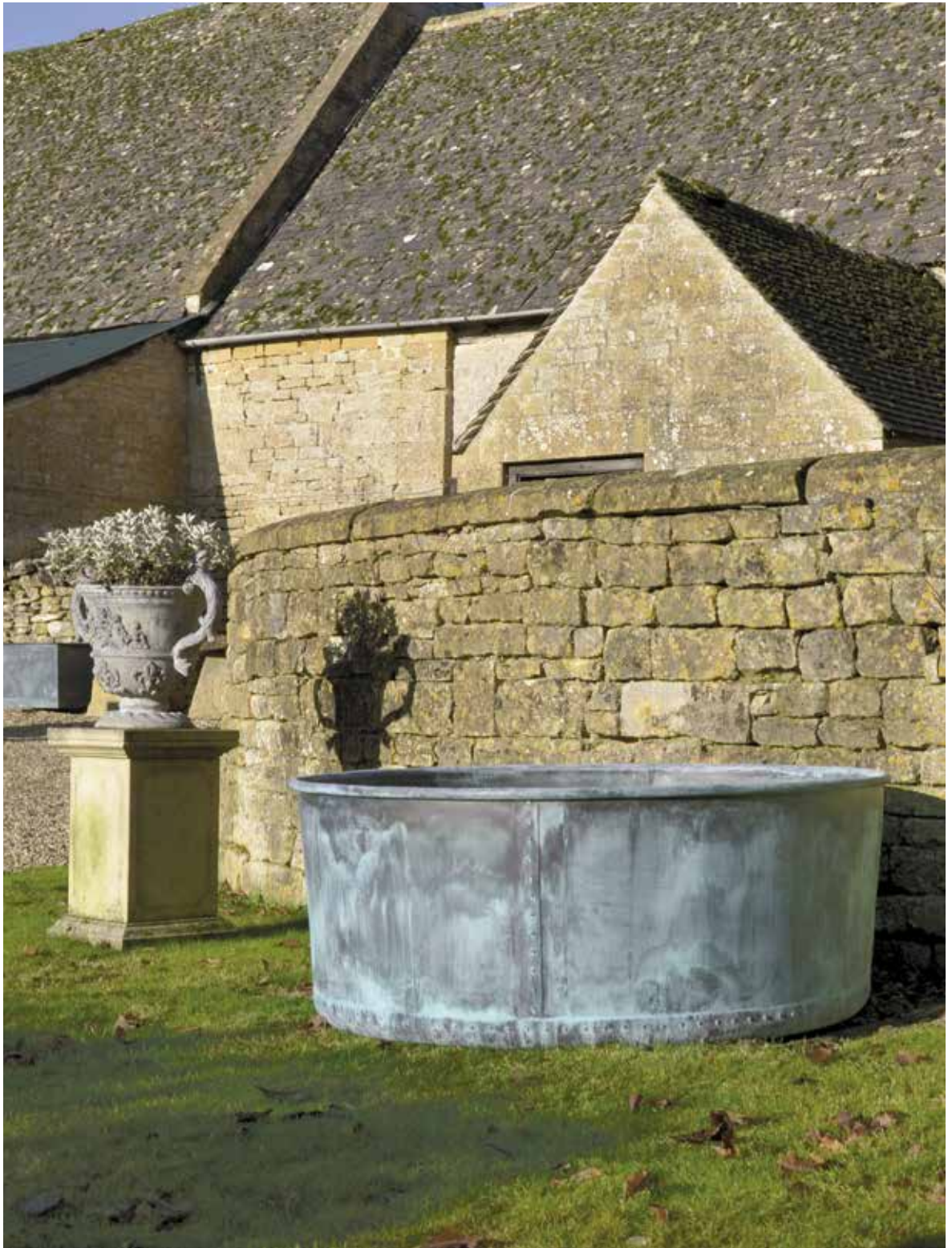
Photograph by Eleanor Walpole/Garden Design by Butcher Wakefield

**The Courtyard  
Copper Planter  
Large**

Hand crafted from heavy gauge brass, riveted together and then verdigris patinated to imitate the Victorian antique originals.

Height 62.2 cm [2' 1/2"]

Diameter 159.5 cm [5' 2 3/4"]

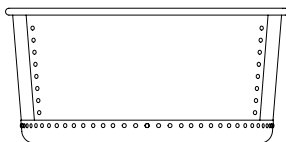




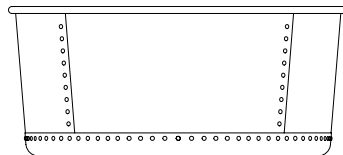
Featured above: *The Courtyard Copper Planter – Medium – Rolled Edge*  
 Featured opposite: *The Courtyard Copper Planter – Large – Rolled Edge*

**The Courtyard  
 Copper Planters  
 Rolled Edge**

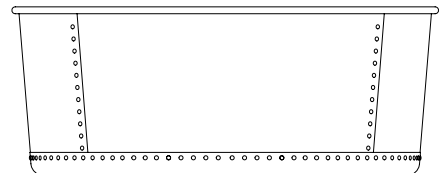
Hand crafted from heavy gauge brass with a rolled-edge top, riveted together and verdigris patinated.



**Small**  
 Height 50 cm [1' 7¾"]  
 Diameter 104.9 cm [3' 5½"]



**Medium**  
 Height 55 cm [1' 9¾"]  
 Diameter 124.9 cm [4' 1¼"]



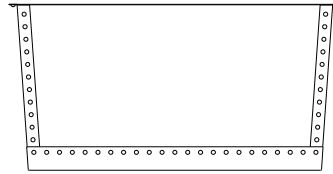
**Large**  
 Height 62.2 cm [2' 1½"]  
 Diameter 157.4 cm [5' 2"]





## The Rectangular Copper Planters

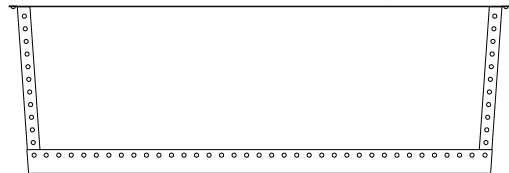
Hand crafted from heavy gauge brass, riveted together and then verdigris patinated to echo the Victorian antique originals.



### Small

Height 60 cm [1' 11½"]

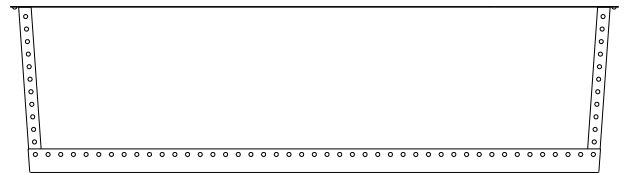
Length 120 cm [3' 11¼"]



### Medium

Height 60 cm [1' 11½"]

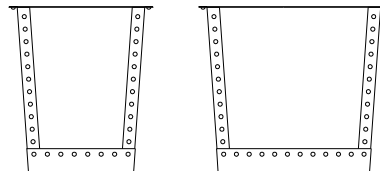
Length 180 cm [5' 10¾"]



### Large

Height 60 cm [1' 11½"]

Length 220 cm [7' 2½"]



### Available in two depths:

Narrow 52.2 cm [1' 8½"]

Wide 69 cm [2' 3¼"]



**The Rectangular  
Copper Planter  
Small**

Hand crafted from heavy gauge brass, riveted together and then verdigris patinated to echo the Victorian antique originals.

Height 60cm [1' 11½"]

Length 120cm [3' 11¼"]

*Available in two depths:*

Narrow 52.2cm [1' 8½"]

Wide 69cm [2' 3¼"]



**The Rectangular  
Copper Planter  
Medium**

Hand crafted from heavy gauge brass, riveted together and then verdigris patinated to echo the Victorian antique originals.

Height 60 cm [1' 11½"]

Length 180 cm [5' 10¾"]

*Available in two depths:*

Narrow 52.2 cm [1' 8½"]

Wide 69 cm [2' 3¼"]



**The Rectangular  
Copper Planter**  
**Large**

Hand crafted from heavy gauge brass, riveted together and then verdigris patinated to echo the Victorian antique originals.

Height 60cm [1' 11½"]  
Length 220cm [7' 2½"]

*Available in two depths:*  
Narrow 52.2cm [1' 8½"]  
Wide 69cm [2' 3¼"]



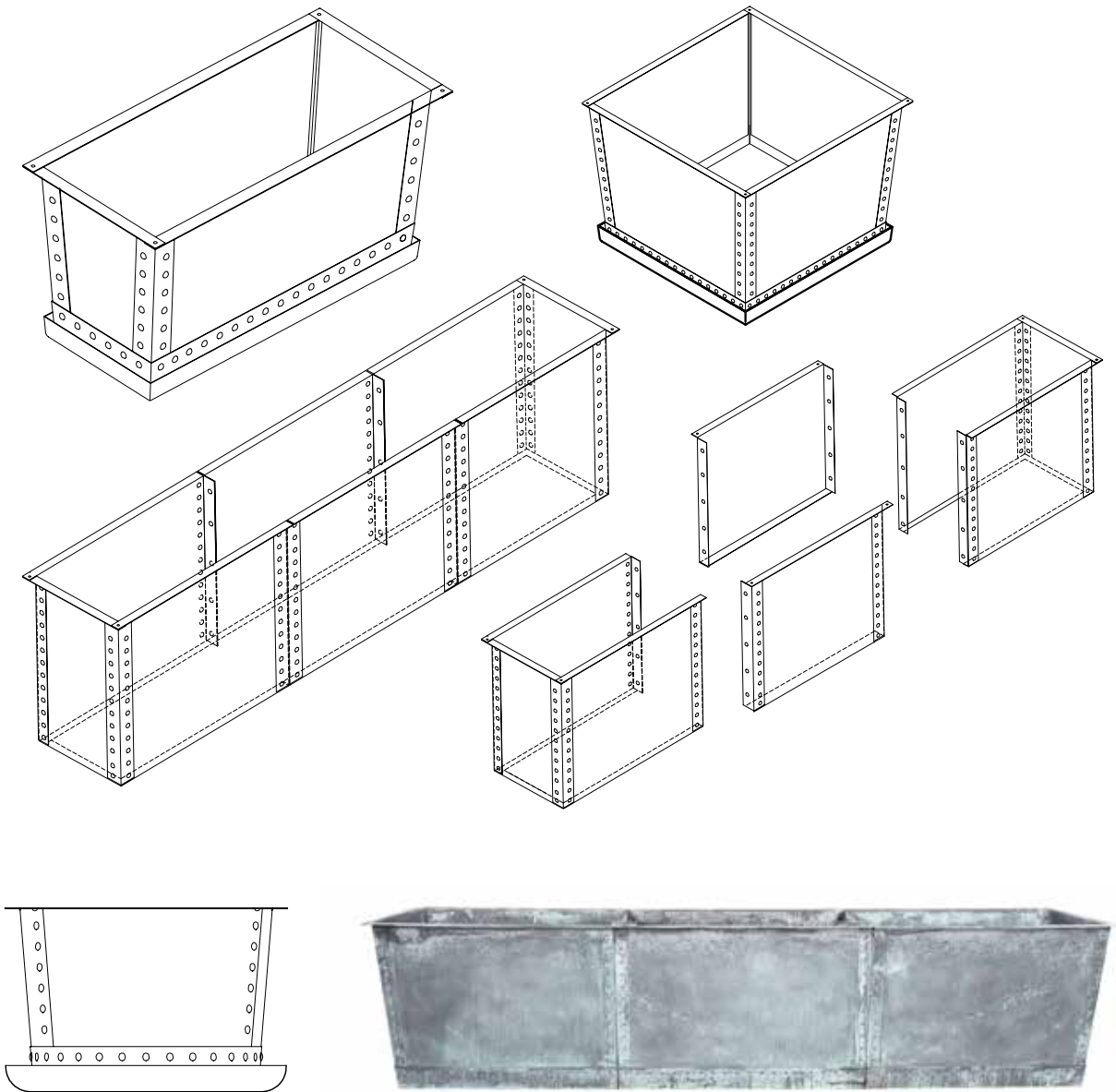


Photograph by Eleanor Walpole/Garden Design by Butler Wicksfield



**Bespoke Copper  
Planters & Drip Trays**

Hand crafted planters  
fabricated from heavy  
gauge brass, made to your  
required specification.  
Drawings and pricing  
upon request.





### **The Townhouse Lead Planters**

A lead planter of circular form with drainage holes to the base.

#### **Small**

Height 51 cm [1' 8"]  
Diameter 61 cm [2']

#### **Medium**

Height 61 cm [2']  
Diameter 76 cm [2' 6"]

#### **Large**

Height 75 cm [2' 6"]  
Diameter 91.5 cm [3']







**FOUNTAINS  
& POOL  
SURROUNDS**

Image courtesy of Nico Wills Photography/Miscden Estate



Installation and photograph by Cotswold Estates and Gardens Ltd

### **The Two Tier Fountain**

A two tier fountain in age patinated artificial stone taken from an 18th century original, each bowl having egg and dart carving to the rim, raised upon baluster pedestals with carved foliage. The upper bowl is surmounted by a pineapple finial. A pump pack is available.

Overall height  
262cm [8'7"]  
Overall diameter  
137cm [4'6"]  
Square at base  
67cm [2'2"]





Installation and photograph by Cotswold Estates and Gardens Ltd

### **The Decorative Circular Pool Surround**

An age patinated artificial stone circular pool surround having egg and dart decoration.

External diameter  
426 cm [14']

Internal diameter  
366 cm [12']

Height  
22 cm [8'½"]



### **The Great Westwood Pool Surround**

A large and impressive  
age patinated artificial  
stone pool surround at  
6 metres diameter.

External diameter  
600 cm [19' 8"]

Height  
35 cm [1' 1¾"]



Image courtesy of Nico Valls Photography/Miserden Estate

### **The Single Tier Fountain**

A single tier fountain in age patinated artificial stone, the bowl having egg and dart moulding to the rim raised upon a pedestal with acanthus foliage on square base. Surmounted by a spout in the form of a pineapple. A pump pack is available.

Overall height  
125 cm [4' 1"]  
Overall diameter  
80 cm [2' 7½"]  
Square at base  
45 cm [1' 6"]



### **The Square Pool Surround**

This age patinated artificial stone pool surround has many possibilities; squares, rectangles and rills. Illustration shows standard size.

Overall width 262cm [8'7"]

Height 28cm [11"]



**The Circular  
Pool Surround**

An age patinated artificial  
stone circular pool  
surround.

External diameter  
320cm [10' 6"]

Height  
28cm [11"]



### **The Large Low Single Tier Fountain**

A large, low, single tier fountain in age patinated artificial stone, the bowl having egg and dart moulding to the rim, raised upon a circular foot and square base. Surmounted by a spout in the form of a pineapple. A pump pack is available.

Overall height  
84cm [2'9"]

Overall diameter  
135cm [4'5"]

Square at base  
67cm [2'2"]

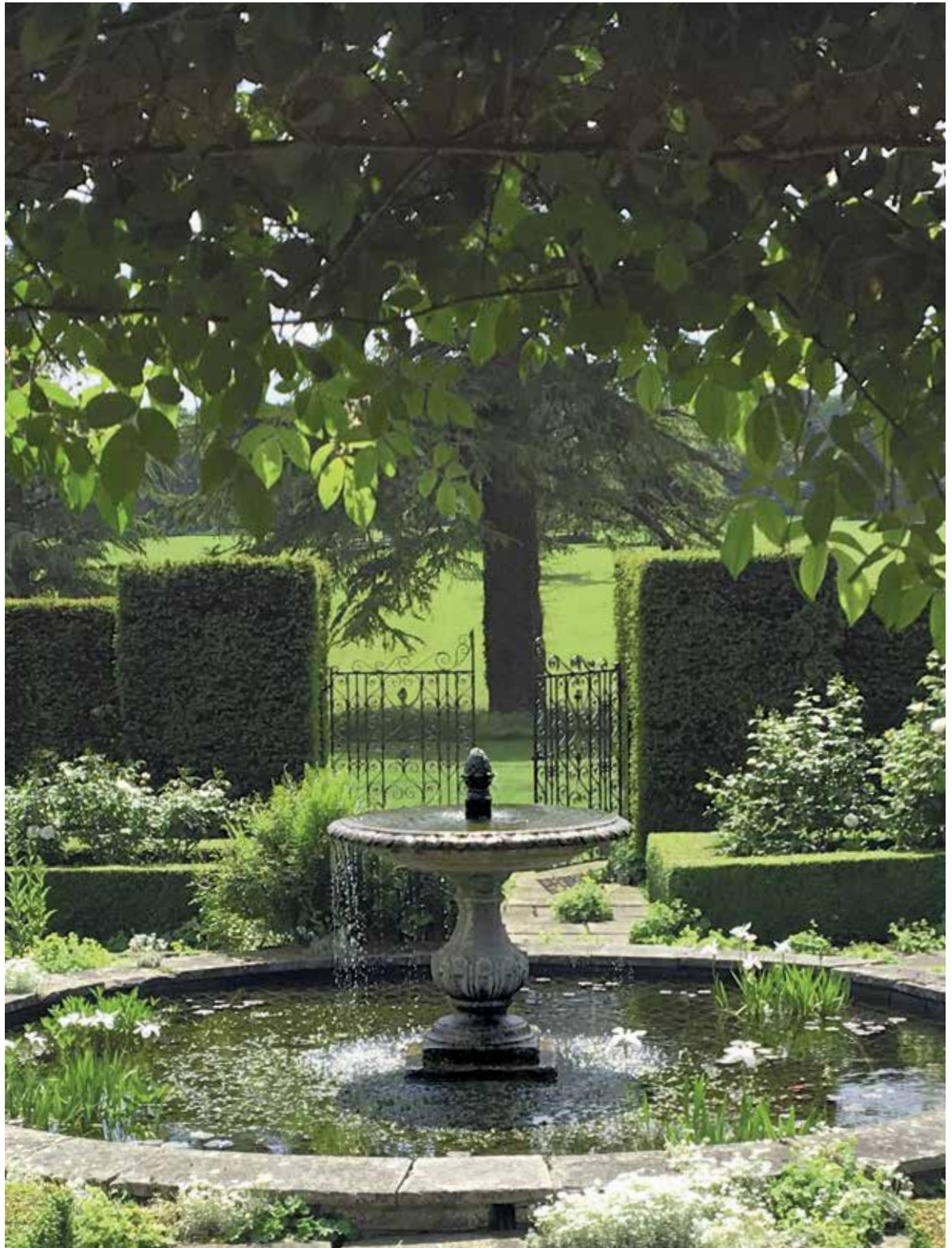
### **The Large Single Tier Fountain**

A large single tier fountain in age patinated artificial stone, the bowl having egg and dart moulding to the rim, raised upon a baluster pedestal carved with acanthus foliage, with circular foot and square base. Surmounted by a spout in the form of a pineapple. A pump pack is available.

Overall height  
152.5cm [5']

Overall diameter  
135cm [4'5"]

Square at base  
67cm [2'2"]



### **The Wall Fountain with Lion Mask**

A wall fountain in age patinated artificial stone, having arched back plate inset with a lead lion mask spout, raised above a 'D' shaped bowl with stepped rectangular base. A pump pack is available.

Height 151 cm [5']  
Width 80 cm [2' 7"]  
Depth 51 cm [1' 8"]







### **The Onslow Park Wall Fountain with Lead Spout**

A hand carved natural limestone wall fountain having a lead spout centred to the classical back plate. A bespoke fibreglass liner, tinted to match the stone, and pump pack, are available.

Height 156 cm [5' 1½"]

Width 140 cm [4' 7"]

Depth 86 cm [2' 10"]





**SEATS, BENCHES  
& TABLES**



### **The Quercus Robur High Back Garden Seat**

An Arts & Crafts inspired garden seat carved from 6-year-old air-dried English Oak (*Quercus Robur*), of plank construction with keyed mortise and tenon joints.

Height 91.5cm [3']

Width 198cm [6' 6"]

Depth 74cm [2' 5"]



### **The Quercus Robur Garden Seat**

An Arts & Crafts inspired garden seat carved from 6-year-old air-dried English Oak (Quercus Robur), of plank construction with keyed mortise and tenon joints.

Height 67 cm [2' 2½"]

Width 198 cm [6' 6"]

Depth 74 cm [2' 5"]





**The Curved  
Neo-Classical Seat**

A hand carved natural limestone park seat of curved form having panelled back with central roundel, scrolled arm supports and volute feet.

Height 100 cm [3' 3"]

Width 313 cm [9' 9"]

Depth 53 cm [1' 9"]



### **The Neo-Classical Seat**

A hand carved natural limestone seat having panelled back with central roundel, dentil moulded arm supports and feet with inswept plinth bases.

Height 102 cm [3' 4"]

Width 166.5 cm [5' 5½"]

Depth 51.5 cm [1' 8¼"]





### **The Classic Curved Stone Bench**

A hand carved natural limestone bench having fluted supports and shaped seat.

Height 48 cm [1'7"]

Width 140 cm [4'7"]

Depth 41 cm [1'4"]



### **The Classic Straight Stone Bench**

A hand carved natural limestone bench having rectangular top on fluted shaped supports.

Height 48cm [1'7"]

Width 140 cm [4'7"]

Depth 41 cm [1'4"]



**The Classic Straight  
Stone Bench  
Large**

A hand carved natural limestone bench having rectangular top on fluted shaped supports.

Height 49 cm [1' 7 $\frac{1}{4}$ "]  
Width 200 cm [6' 6 $\frac{3}{4}$ "]  
Depth 40 cm [1' 3 $\frac{3}{4}$ "]





## SUNDIALS & ARMILLARIES

Garden Design by Howard Design Studio LLC / Photograph by Emily Followill



## The Inverted Sundial Pedestal

A hand carved natural limestone sundial pedestal of tapering form, available with choice of armillary sphere.



### With Zenith Armillary Sphere

Overall height  
178 cm [5' 10"]  
Square at base  
34 cm [1' 1½"]  
Sphere diameter  
47 cm [1' 6½"]



### With Greenwich Armillary Sphere

Overall height  
198 cm [6' 6"]  
Square at base  
34 cm [1' 1½"]  
Sphere diameter  
70 cm [2' 3½"]

**The Solstice  
Sundial Pedestal**

A hand carved natural limestone sundial pedestal of elegant baluster form. A choice of dial plate or armillary sphere is available.

**With Thomas Wright  
Dial Plate**

Overall height  
121 cm [3' 11½"]  
Square at base  
36 cm [1' 2"]

**With Zenith Armillary  
Sphere**

Overall height  
172.5 cm [5' 8"]  
Square at base  
36 cm [1' 2"]









Image courtesy of Butter Wakefield Garden Design

**The William IV  
Sundial Pedestal**

An age patinated artificial stone sundial pedestal, available with choice of armillary sphere.

**Shown with Greenwich  
Armillary Sphere**

Overall height  
191 cm [6' 3¼"]  
Square at base  
68 cm [2' 2½"]  
Sphere diameter  
70 cm [2' 3½"]





### **The Thomas Wright Sundial Plate**

A verdigris bronze sundial plate being a faithful copy of the 18th century original by Thomas Wright Instrument Maker to George II.

Height  
20 cm [8"]  
Diameter  
31 cm [1']



### **The Zenith Armillary Sphere**

A verdigris bronze armillary sphere, pierced with an arrow and calibrated with the hours. Mounted upon a bell shaped support.

Overall height  
74 cm [2' 5"]  
Sphere diameter  
47 cm [1' 6½"]  
Diameter at base  
17 cm [6½"]



### **The Greenwich Armillary Sphere**

A verdigris bronze armillary sphere, pierced with an arrow and calibrated with the hours. Mounted upon a bell shaped support.

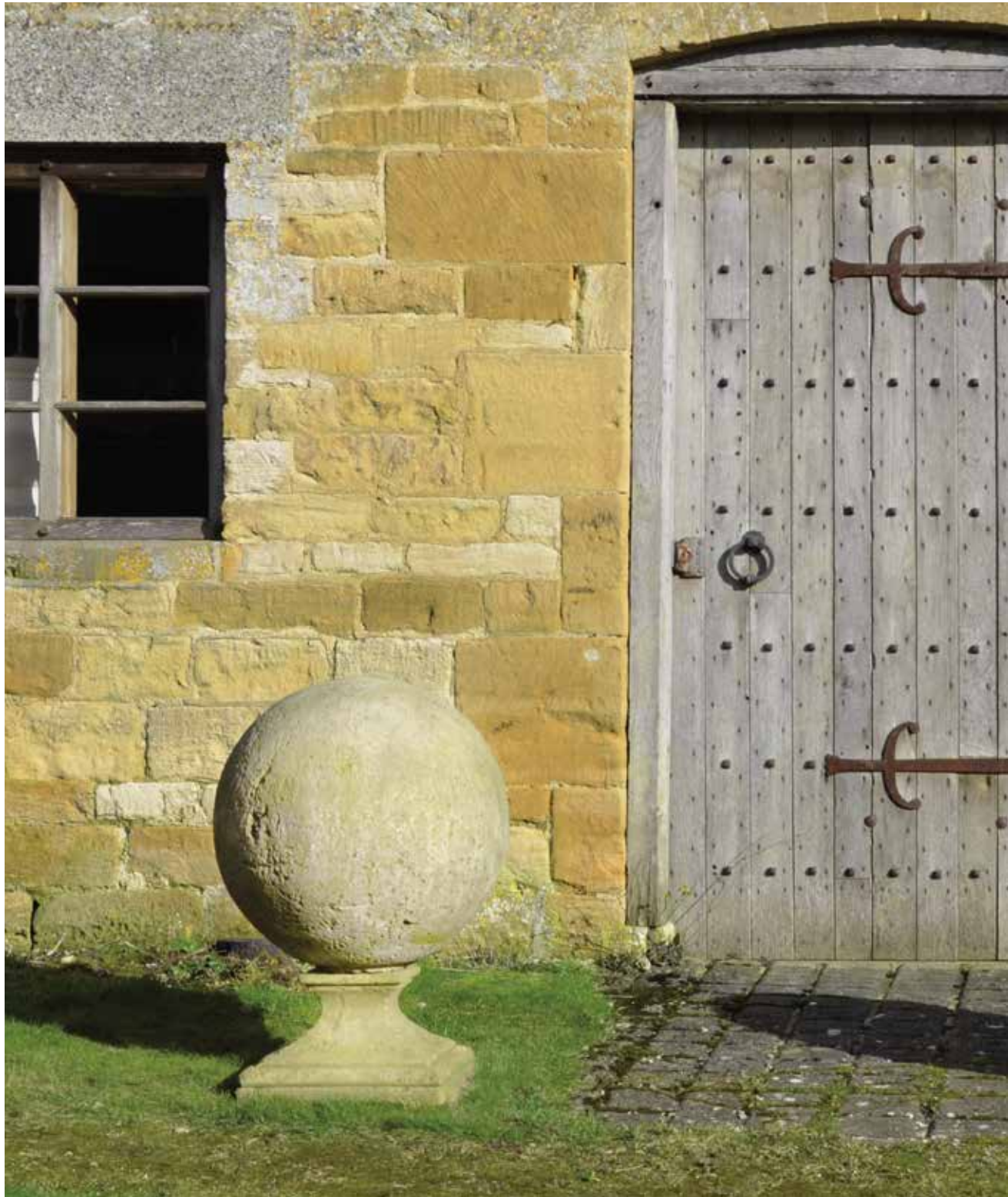
Overall height  
94 cm [3' 1"]  
Sphere diameter  
70 cm [2' 3½"]  
Diameter at base  
17 cm [6½"]



### **The Holborn Armillary Sphere**

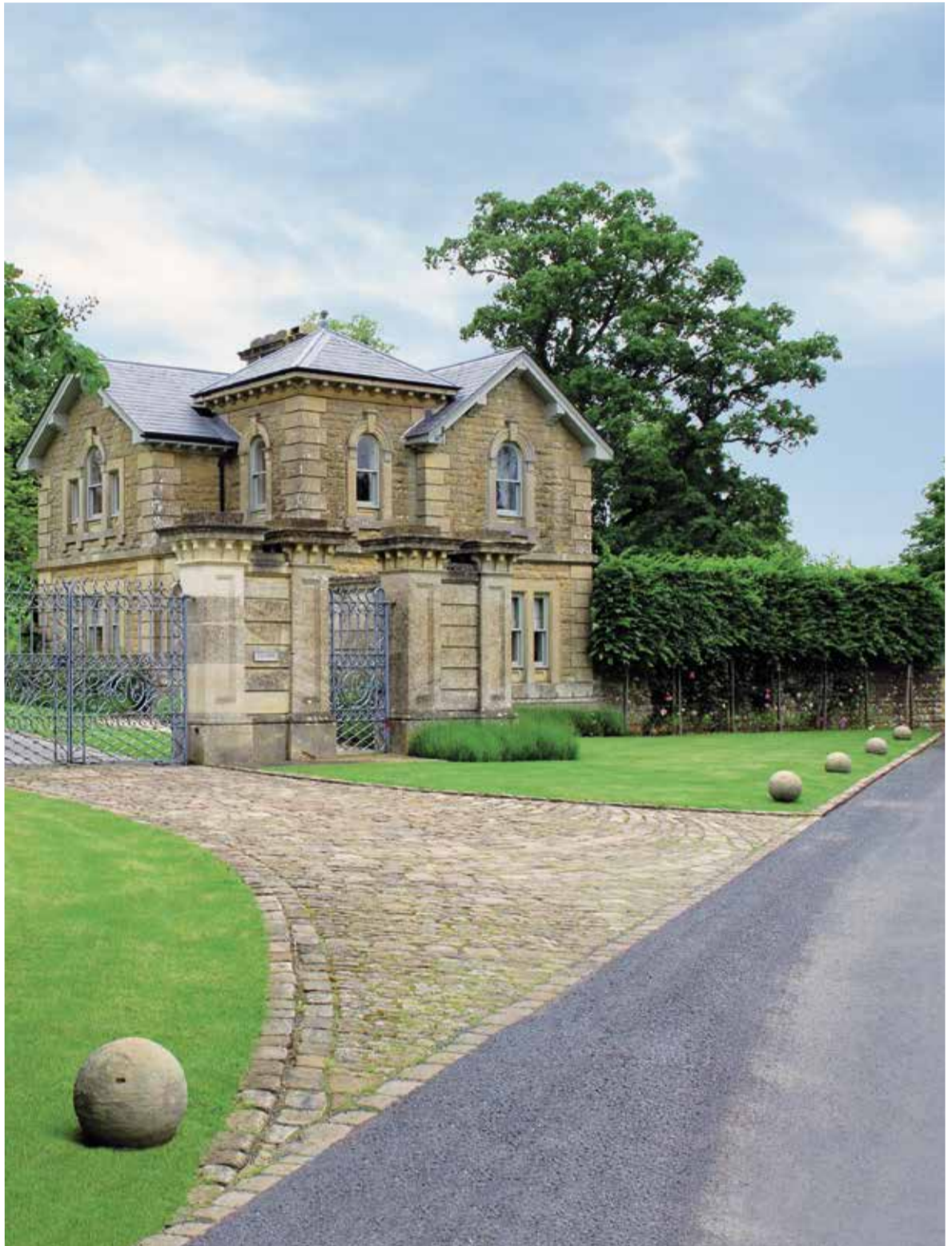
A verdigris bronze oversized armillary sphere, pierced with a decorative arrow and calibrated with the hours. Mounted upon a bell shaped support.

Overall height  
125 cm [4' 1"]  
Sphere diameter  
94 cm [3' 1"]  
Diameter at base  
17 cm [6½"]





**SPHERES &  
FINIALS**







**The Sphere**  
**Small**

An age patinated artificial stone sphere. Perfect for driveway edging or as finials.

Diameter 38cm [1'3"]



### **The Sphere**

#### **Medium**

An age patinated artificial stone sphere. Perfect for driveway edging or as finials.

Diameter 45.5 cm [1' 6"]



### **The Sphere**

#### **Large**

An age patinated artificial stone sphere. Perfect for driveway edging or as finials.

Diameter 56 cm [1' 10"]



**The Sphere Finial**  
**Medium**

An age patinated artificial stone sphere raised upon square waisted socle.

Height 71 cm [2' 4"]

Sphere diameter 45.5 cm [1' 6"]

Square at base 38 cm [1' 3"]



**The Sphere Finial  
Large**

An age patinated artificial stone sphere raised upon square waisted socle.

Height 80 cm [2' 7½"]

Sphere diameter 56 cm [1' 10"]

Square at base 38 cm [1' 3"]





### **The Heritage Finial**

An age patinated artificial stone lidded urn having circular socle and square base. The campana shaped body having lobed decoration to the bowl, the shaped lid surmounted by a finial.

Height 84 cm [2' 9½"]

Diameter 56 cm [1' 10"]

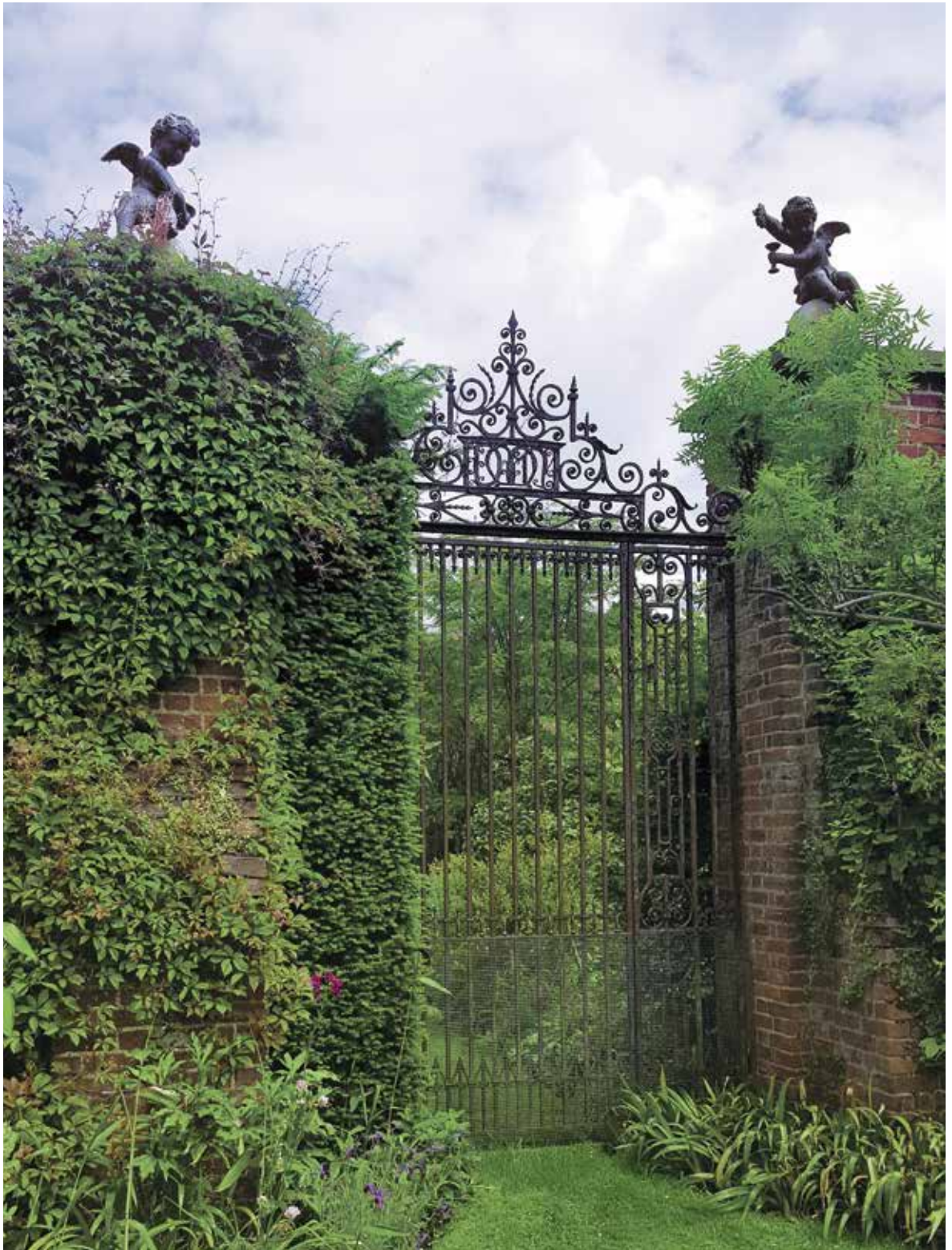
Square at base 30 cm [1']

### **The Heritage Plinth**

An age patinated artificial stone Neo-classical plinth after the original by Austin and Seeley.

Height 91 cm [3']

Square at base 48 cm [1' 7"]







**The Winged Lead  
Putti Finials**

A pair of winged lead Putti seated upon artificial stone spheres, after the 18th century originals.

Height 86 cm [2'10"]

Width 61 cm [2']





**GARDEN  
ORNAMENT  
& GARDEN  
STRUCTURES**



**'Rudolph' The  
Rusty Reindeer**

A rusty iron reindeer,  
available singly or as a herd.

Height 75 cm [2' 5½"]

Width 71 cm [2' 4"]



### **The Rusty Blooms**

An assemblage of rusty iron tulips with stems and leaves, creating a flexible sculptural installation.

Height 122cm [4']

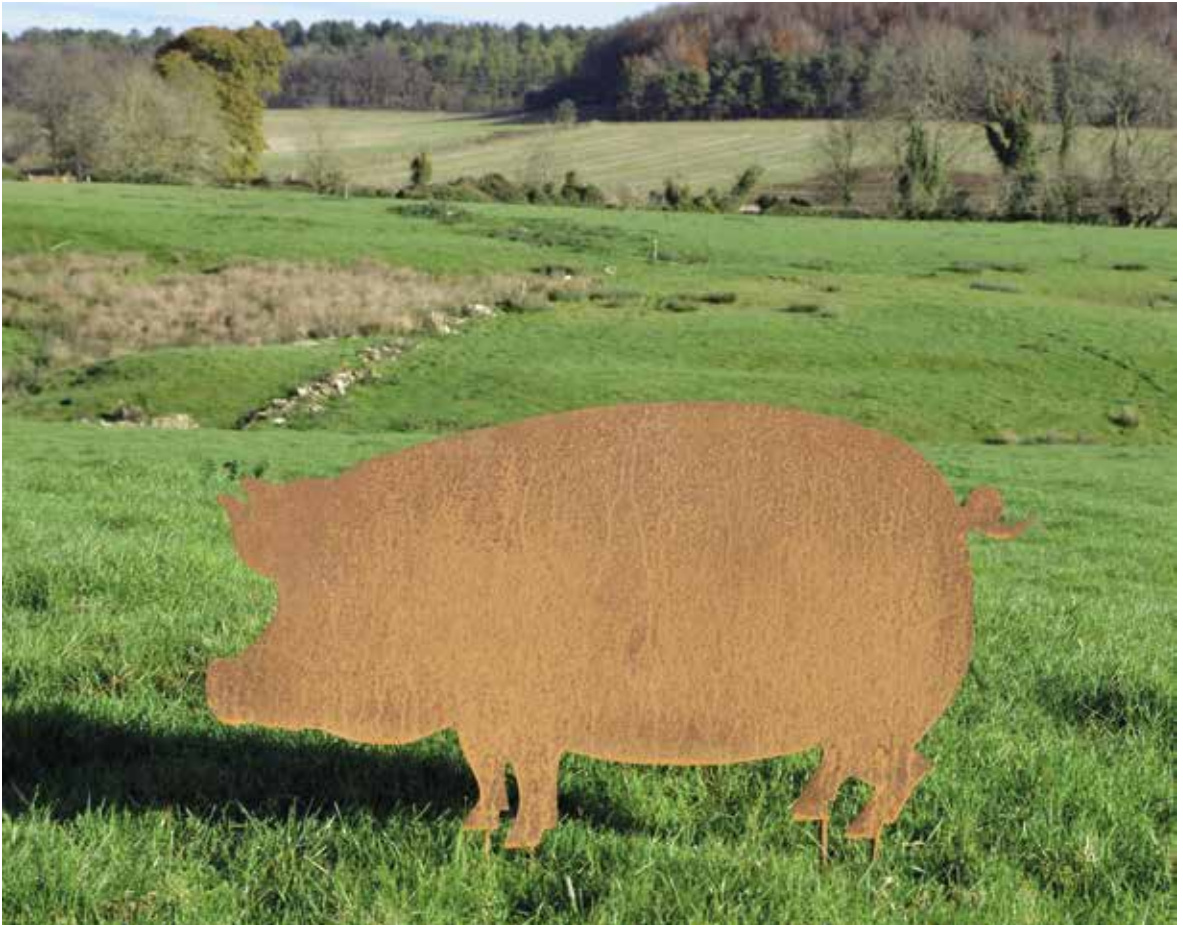


**'Dolly' The Rusty Sheep**

A rusty iron sheep, available singly or as a flock.

Height 51 cm [1' 8"]

Width 55 cm [1' 9½"]



**'Colin' The Rusty Pig**

A rusty iron pig, available singly or as a sounder.

Height 48cm [1'7"]

Width 94cm [3'1"]



### **The Reclining Fawn**

An artificial stone statue depicting a reclining fawn with raised head, alert ears and small lead antlers.

Height 69cm [2' 6"]

Length 102cm [3' 4"]

Width 41cm [1' 4"]





### **The Bird Bath**

An age patinated artificial stone bird bath; the shallow circular bowl is raised upon an ornate pedestal having acanthus decorations with a circular foot and a square base.

Height 97 cm [3' 2¼"]

Diameter 80 cm [2' 7½"]

Square at base 45 cm [1' 5¾"]



**The Tree of Life  
Wall Panel**

A hand punched and finished decorative wall panel incorporating a tree with birds of paradise.

Diameter 86.5cm [2' 10"]

*Please note that this item will rust in time when outside*



### **The Octagonal Vine Wellhead**

A hand carved natural limestone wellhead with stone step, wrought iron overthrow, pulley and chain.

Height 254 cm [8' 4"]

Width 142 cm [4' 8"]



## **The Pergola**

Bespoke commissions undertaken to supply hand carved natural limestone columns with English oak trellis.



**Bespoke Commissions  
Undertaken**

Illustrated – Royal Signals  
Memorial at The National  
Memorial Arboretum,  
Alrewas, Staffordshire,  
England.





**PRICING &  
INFORMATION**

## PRICE LIST 2020

PAGE NO.	<b>PLANTERS</b>	PRICE (EXCL. VAT)
<b>The Circular Copper Planters</b>		
6	The Circular Copper Planter – Small	£ 800.00
12	The Circular Copper Planter – Small - Rolled Edge	£ 900.00
	The Circular Copper Planter – Small - Rolled Edge - Watertight	£ 1,000.00
7	The Circular Copper Planter – Medium	£ 1,300.00
12	The Circular Copper Planter – Medium - Rolled Edge	£ 1,400.00
	The Circular Copper Planter – Medium - Rolled Edge - Watertight	£ 1,600.00
8	The Circular Copper Planter – Large	£ 1,700.00
12	The Circular Copper Planter – Large - Rolled Edge	£ 1,850.00
	The Circular Copper Planter – Large - Rolled Edge - Watertight	£ 2,100.00
10	The Circular Copper Planter – Very Large	£ 2,200.00
12	The Circular Copper Planter – Very Large - Rolled Edge	£ 2,350.00
	The Circular Copper Planter – Very Large - Rolled Edge - Watertight	£ 2,650.00
<b>The Sissinghurst Castle Garden Copper Planters</b>		
15	The Sissinghurst Castle Garden Copper Planter	£ 2,400.00
16	The Sissinghurst Castle Garden Copper Planter - Rolled Edge	£ 2,700.00
<b>The Square Copper Planters</b>		
21	The Square Copper Planter – Small	£ 1,000.00
28	The Square Copper Planter – Small - Rolled Edge	£ 1,100.00
23	The Square Copper Planter – Medium	£ 1,400.00
28	The Square Copper Planter – Medium - Rolled Edge	£ 1,600.00
25	The Square Copper Planter – Large	£ 1,800.00
28	The Square Copper Planter – Large - Rolled Edge	£ 2,200.00
27	The Square Copper Planter – Very Large	£ 2,400.00
28	The Square Copper Planter – Very Large - Rolled Edge	£ 2,800.00



<b>PAGE NO.</b>	<b>The Circular Terrace Copper Planters</b>	<b>PRICE (EXCL. VAT)</b>
30	The Circular Terrace Copper Planter - Small	£ 1,400.00
30	The Circular Terrace Copper Planter - Small - Rolled Edge	£ 1,500.00
30	The Circular Terrace Copper Planter - Medium	£ 1,600.00
30	The Circular Terrace Copper Planter - Medium - Rolled Edge	£ 1,750.00
30	The Circular Terrace Copper Planter - Large	£ 1,800.00
30	The Circular Terrace Copper Planter - Large - Rolled Edge	£ 2,000.00
<b>The Square Terrace Copper Planters</b>		
32	The Square Terrace Copper Planter - Small	£ 1,500.00
32	The Square Terrace Copper Planter - Small - Rolled Edge	£ 1,650.00
32	The Square Terrace Copper Planter - Medium	£ 1,700.00
32	The Square Terrace Copper Planter - Medium - Rolled Edge	£ 1,850.00
32	The Square Terrace Copper Planter - Large	£ 2,000.00
32	The Square Terrace Copper Planter - Large - Rolled Edge	£ 2,200.00
<b>The Courtyard Copper Planters</b>		
36	The Courtyard Copper Planter – Small	£ 2,200.00
41	The Courtyard Copper Planter – Small - Rolled Edge	£ 2,400.00
	The Courtyard Copper Planter – Small - Rolled Edge - Watertight	£ 2,650.00
37	The Courtyard Copper Planter – Medium	£ 2,800.00
41	The Courtyard Copper Planter – Medium - Rolled Edge	£ 3,100.00
	The Courtyard Copper Planter – Medium - Rolled Edge - Watertight	£ 3,350.00
39	The Courtyard Copper Planter – Large	£ 3,600.00
41	The Courtyard Copper Planter – Large - Rolled Edge	£ 3,950.00
	The Courtyard Copper Planter – Large - Rolled Edge - Watertight	£ 4,300.00

PAGE NO.	<b>The Rectangular Copper Planters</b>	PRICE (EXCL. VAT)
44	The Rectangular Copper Planter – Small - Narrow	£ 2,000.00
44	The Rectangular Copper Planter – Small - Wide	£ 2,200.00
45	The Rectangular Copper Planter – Medium - Narrow	£ 2,600.00
45	The Rectangular Copper Planter – Medium - Wide	£ 2,800.00
46	The Rectangular Copper Planter – Large - Narrow	£ 3,400.00
46	The Rectangular Copper Planter – Large - Wide	£ 3,850.00

### **The Townhouse Lead Planters**

50	The Townhouse Lead Planter – Small	£ 1,800.00
50	The Townhouse Lead Planter – Medium	£ 2,400.00
50	The Townhouse Lead Planter – Large	£ 3,000.00

### **FOUNTAINS & POOL SURROUNDS**

54	The Two Tier Fountain	£ 6,800.00
	The Two Tier Fountain Pump Pack	£ 400.00
55	The Decorative Circular Pool Surround	£ 4,400.00
56	The Great Westwood Pool Surround	£ 6,600.00
57	The Single Tier Fountain	£ 3,000.00
	The Single Tier Fountain Pump Pack	£ 300.00
58	The Square Pool Surround	£ 3,800.00
59	The Circular Pool Surround	£ 3,800.00
60	The Large Low Single Tier Fountain	£ 3,600.00
	The Large Low Single Tier Fountain Pump Pack	£ 400.00
61	The Large Single Tier Fountain	£ 4,000.00
	The Large Single Tier Fountain Pump Pack	£ 400.00
62	The Wall Fountain with Lion Mask	£ 2,800.00
	The Wall Fountain with Lion Mask Pump Pack	£ 300.00
63	The Onslow Park Wall Fountain with Lead Spout	£ 5,800.00
	The Onslow Park Wall Fountain Fibreglass Liner	£ 600.00
	The Onslow Park Wall Fountain Pump Pack	£ 300.00

<b>PAGE NO.</b>	<b>SEATS, BENCHES &amp; TABLES</b>	<b>PRICE (EXCL. VAT)</b>
66	The Quercus Robur High Back Garden Seat	£ 4,800.00
67	The Quercus Robur Garden Seat	£ 3,600.00
69	The Curved Neo-Classical Seat	£ 6,400.00
70	The Neo-Classical Seat	£ 4,000.00
71	The Classic Curved Stone Bench	£ 800.00
72	The Classic Straight Stone Bench	£ 800.00
73	The Classic Straight Stone Bench - Large	£ 1,200.00

### **SUNDIALS & ARMILLARIES**

77	The Inverted Sundial Pedestal with Zenith Armillary Sphere	£ 2,000.00
77	The Inverted Sundial Pedestal with Greenwich Armillary Sphere	£ 2,200.00
78	The Solstice Sundial Pedestal with Thomas Wright Sundial Plate	£ 1,800.00
79	The Solstice Sundial Pedestal with Zenith Armillary Sphere	£ 2,000.00
81	The William IV Sundial Pedestal with Greenwich Armillary Sphere	£ 3,000.00
82	The Thomas Wright Sundial Plate	£ 800.00
82	The Zenith Armillary Sphere	£ 1,000.00
83	The Greenwich Armillary Sphere	£ 1,200.00
83	The Holborn Armillary Sphere	£ 1,400.00

### **SPHERES & FINIALS**

87	The Sphere – Small	£ 350.00
88	The Sphere – Medium	£ 500.00
89	The Sphere – Large	£ 700.00
90	The Sphere Finial – Medium	£ 750.00
91	The Sphere Finial – Large	£ 950.00
92	The Heritage Finial	£ 1,400.00
92	The Heritage Plinth	£ 1,400.00
95	The Winged Lead Putti Finials	£ 4,000.00

### **GARDEN ORNAMENT & GARDEN STRUCTURES**

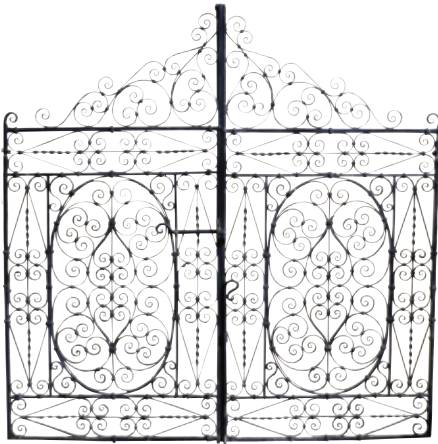
98	'Rudolph' The Rusty Reindeer – each	£ 180.00
99	The Rusty Blooms – each	£ 40.00
100	'Dolly' The Rusty Sheep – each	£ 140.00
101	'Colin' The Rusty Pig – each	£ 240.00
102	The Reclining Fawn	£ 1,500.00
103	The Bird Bath	£ 2,400.00
104	The Tree of Life Wall Panel	£ 300.00
105	The Octagonal Vine Wellhead	£ 5,400.00

# ARCHITECTURAL HERITAGE

ANTIQUÉ | GARDEN | ORNAMENT



With over 40 years' experience specialising in Antique Garden Ornament, Statuary and Fountains, Architectural Heritage carry an extensive inventory to supply clients with the finest examples of antique garden ornament on the market today.





Chelsea Flower Show



Galleries and Garden at Taddington

# ARCHITECTURAL HERITAGE

MODERN | BRITISH | SCULPTURE



Putting the **ART** into **Architectural Heritage**, we offer a tightly curated selection of sculpture by Modern and Contemporary British Sculptors, and works on paper by Sculptors. Our inventory is shown here in our galleries at Taddington and at The London and British Art Fairs.

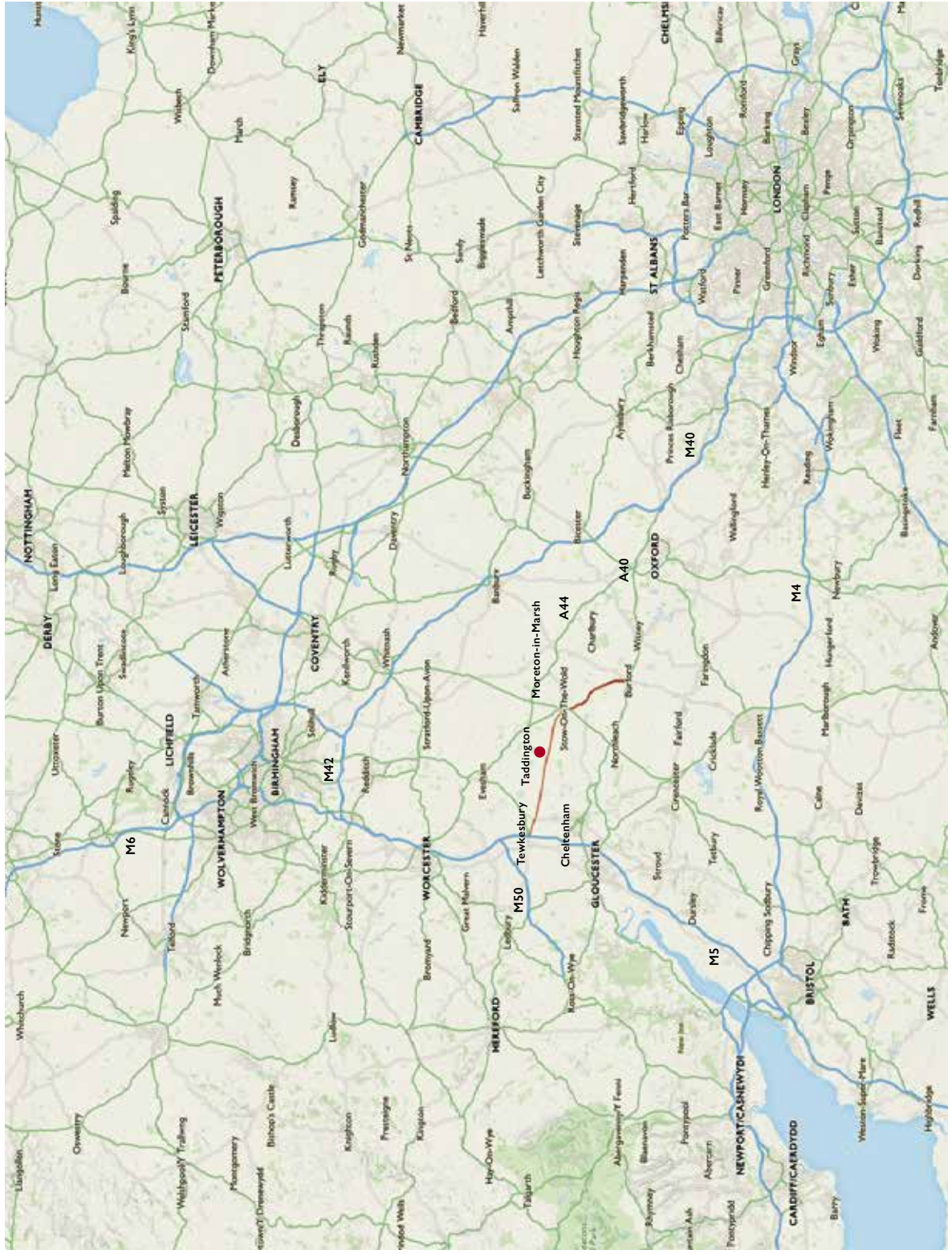




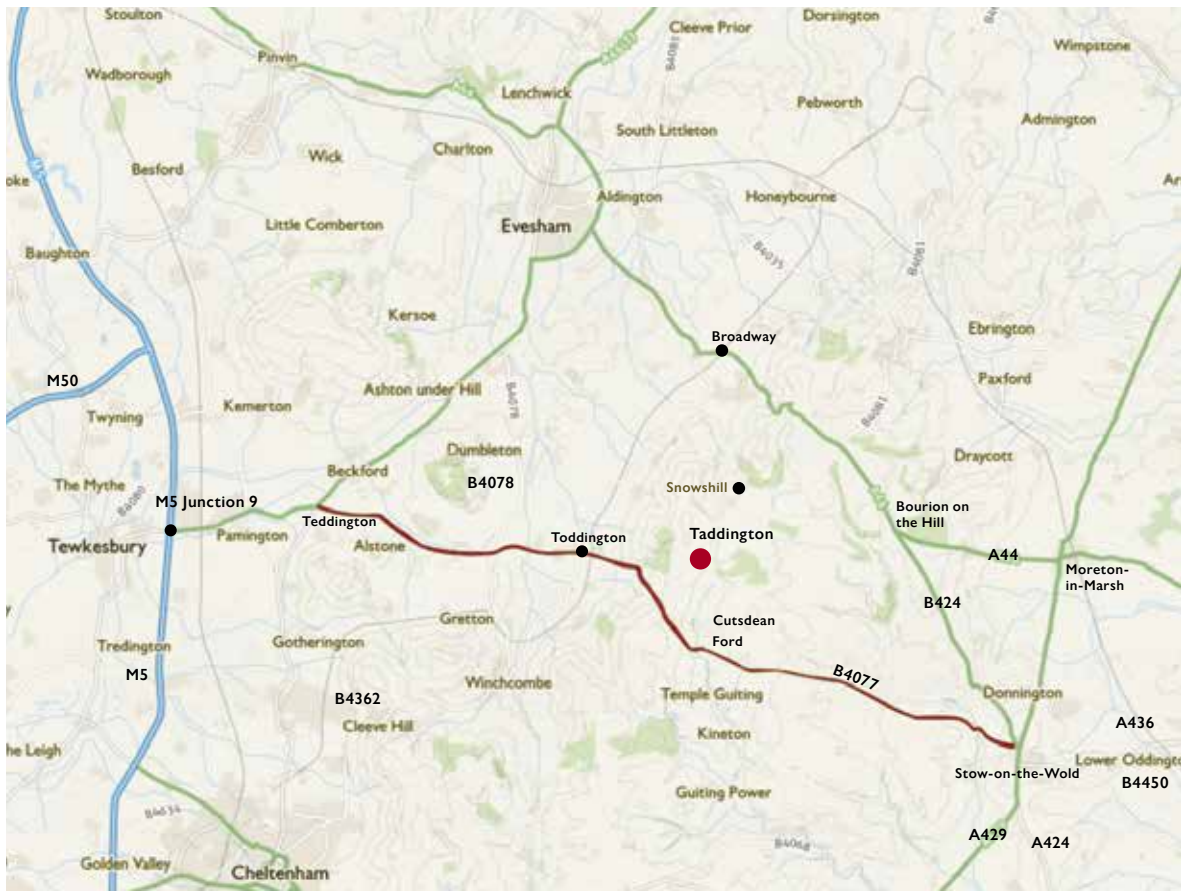
Our Gallery



Art Fairs







### Location

Taddington Manor  
Taddington  
Nr. Cutsdean  
Gloucestershire  
England GL54 5RY

Architectural Heritage is situated in the grounds of Taddington Manor, in the tiny hamlet of Taddington. The galleries and garden are open year round.

We are one hour away from Oxford, Bristol and Birmingham, and two hours from London.



The British Antique Dealers' Association



LAPADA

The Association of Art and Antique Dealers



The Cotswold Art and Antique Dealers' Association

SALVO

The Architectural Dealers' Association



Anti Copying in Design



Forest Carbon Club

# ARCHITECTURAL HERITAGE

GARDEN | SCULPTURE | INTERIOR

Taddington Manor  
Taddington, Nr. Cutsdean  
Gloucestershire  
England GL54 5RY  
office@architectural-heritage.co.uk  
www.architectural-heritage.co.uk  
Tel: +44 [0] 1386 584 414

9.00am – 5.00pm Monday – Friday  
Saturdays by Appointment  
Closed Sundays and Bank Holidays



Designed & typeset by etal design consultants.  
Printed in Great Britain by The Westdale Press Limited,  
on Edixion Offset. Edixion is produced from sustainable  
sources and is fully recyclable.

Copyright © Architectural Heritage 2020. All rights  
reserved. No part of this publication may be reproduced,  
transmitted, or stored in a retrieval system, in any form,  
or by any means, without permission in writing from  
Architectural Heritage.

**FOREST  
CARBON**



If undelivered please return to: Architectural Heritage, Taddington Manor, Taddington, Cheltenham, Gloucestershire, GL54 5RY, UK  
If your details have changed or you no longer wish to receive catalogues please email: [office@architectural-heritage.co.uk](mailto:office@architectural-heritage.co.uk)

